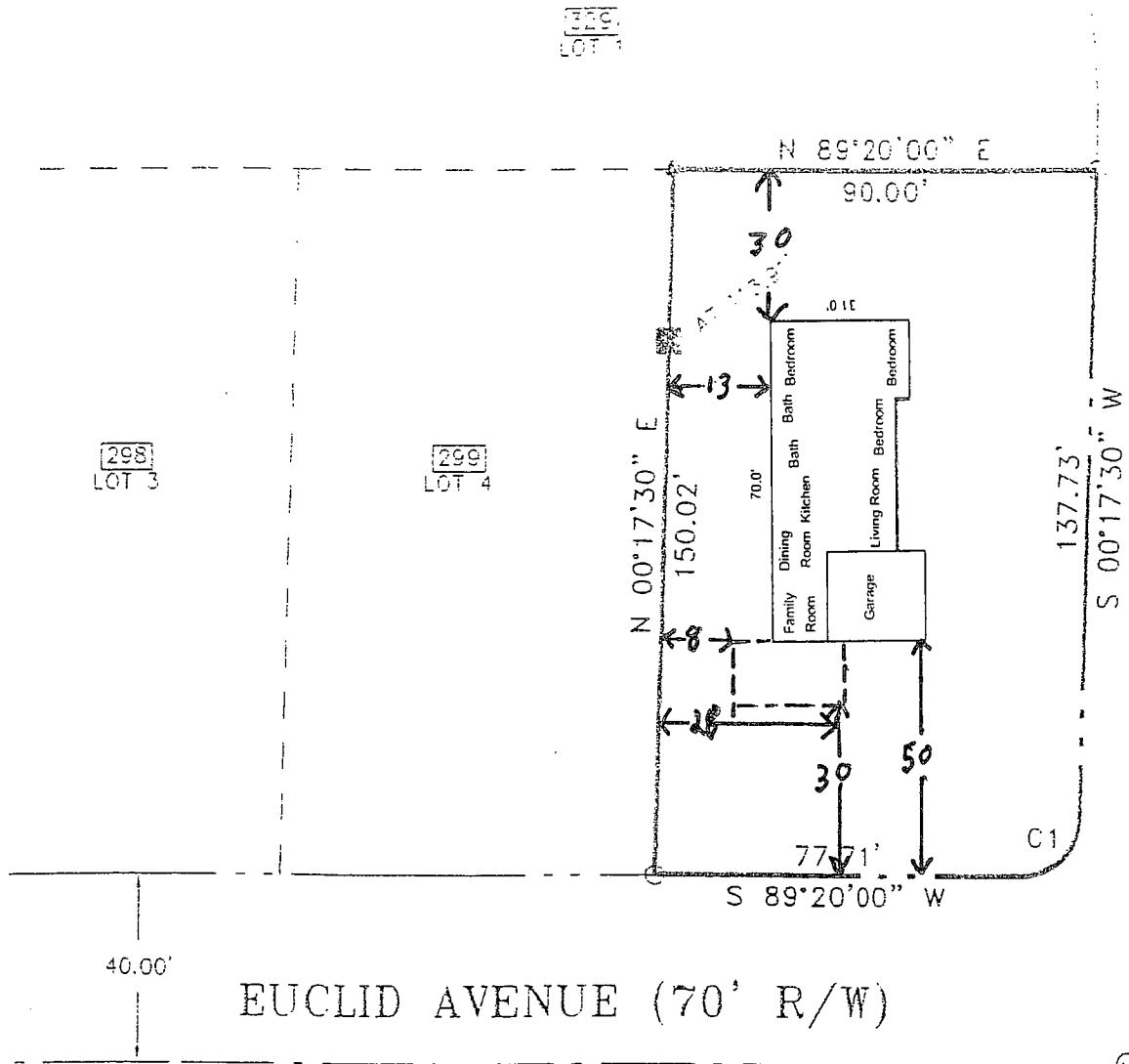
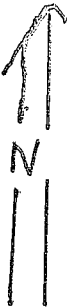


EXISTING; HOUSE WITH DOOR

EXISTING CURVE DATA

CHORD BEARING	CHORD LENGTH	RADIUS	DELTA ANGLE	CHORD BEARING	CHORD BEARING
S 89°02'30"	17.53	12.50	89°02'30"	N 00°21'58"	12.29



298 LOT 3

299 LOT 4

300 LOT 1

MICHAEL DRIVE (60' R/W)

EUCLID AVENUE (70' R/W)

CLOSURE

PntNo	Bearing	Distance	Northing	Easting	Description
1			5000.00	5000.00	
2	N 00°17'30" E	150.02	5150.02	5000.76	
3	N 89°20'00" E	90.00	5151.07	5090.76	
4	S 00°17'30" W	137.73	5013.34	5090.06	
	Radius: 12.50	Chord: 17.53	Degree: 00°21'58" Dir: Right		
	Length: 19.43		Delta: 89°02'30" Tangent: 12.29		
	Chord BPG: S 44°48'45" W Rad-In: N 89°42'30" W Rad-Out: N 00°40'00" W				
	Radius PntNo: PP N: 5013.40 E: 5077.56				
5	S 89°20'00" W	77.71	5000.90	5077.70	
1			5000.00	5000.00	
Closure Error Distance: 0.0000					
Total Distance Inversed: 474.88					
Area: 13468 SF, 0.3092 Acres					

Prepared By Chris Wiedamann

WIEDAMANN\WIEDAMANN.dwg, Layout1, 6/2/2010 1:34:26 PM, Paper.pc3, ANSI B (Tabloid) (landscape), Montgomery