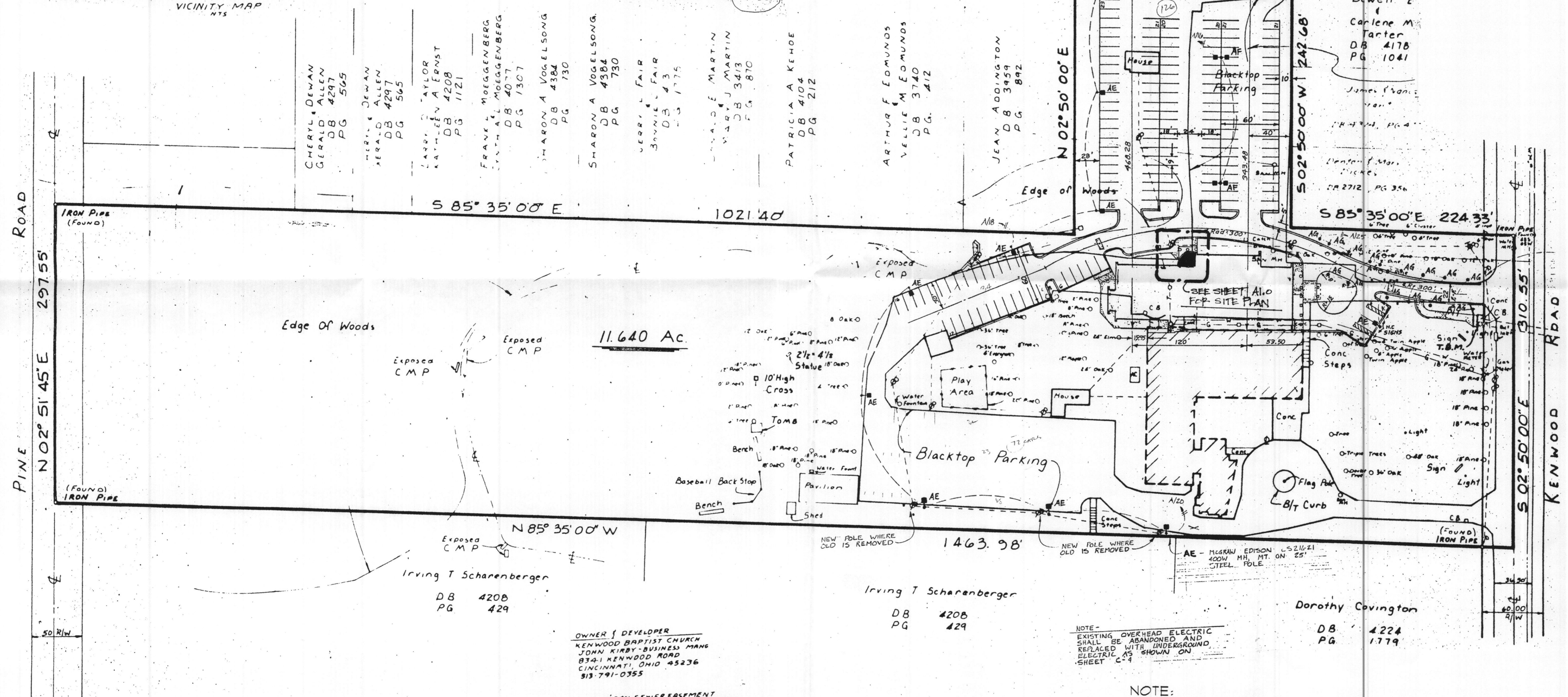
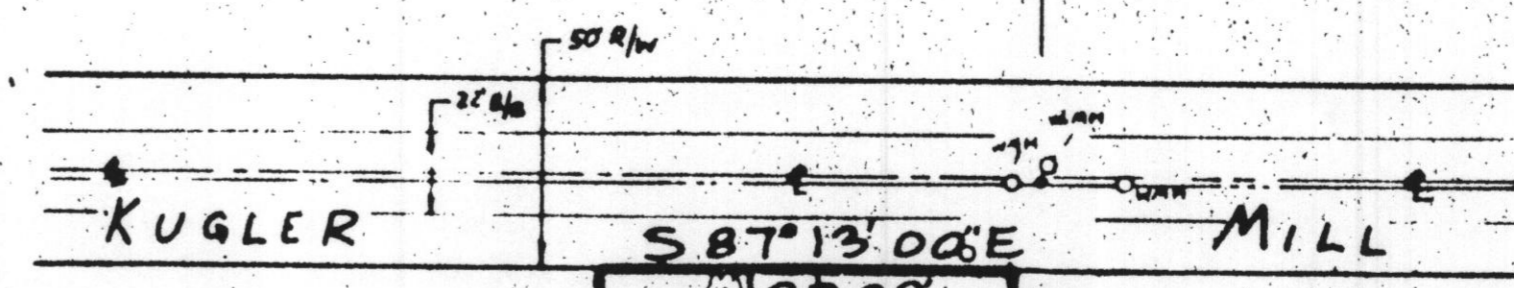
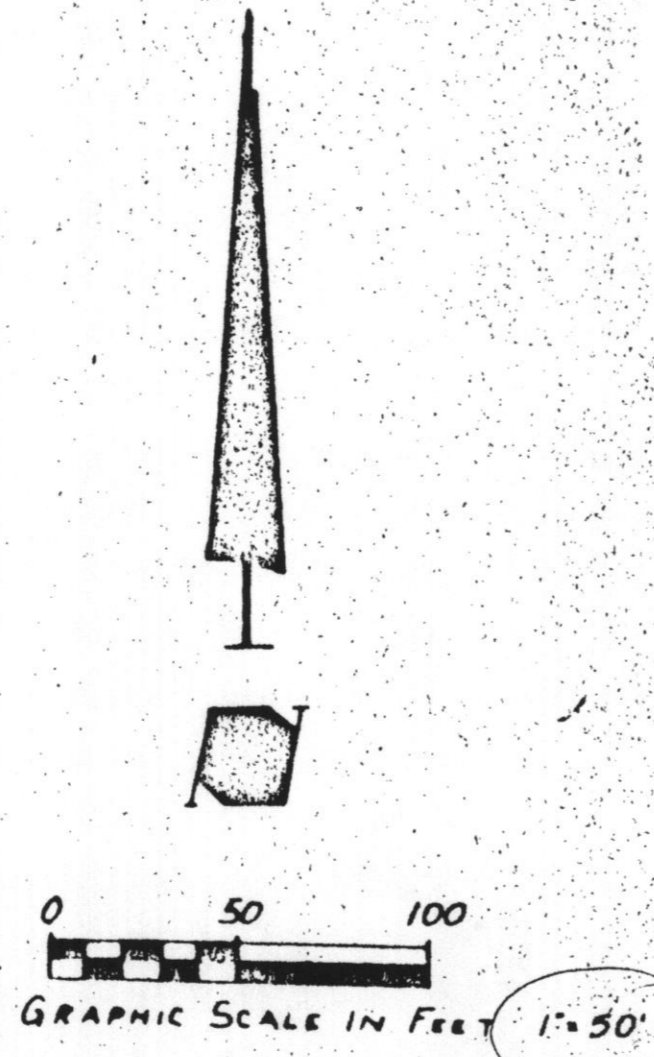


VICINITY MAP  
NTS



- CHERYL DEWAN  
GERALD ALLEN  
DB 4297  
PG 565
- MARY E DEWAN  
ALISA D ALLEN  
DB 4297  
PG 565
- LARRY TAYLOR  
KATHLEEN A ERNST  
DB 4208  
PG 1121
- FRANK MOEGGENBERG  
LYNTH A L MOEGGENBERG  
DB 4077  
PG 1307
- SHARON A VOGELSONG  
DB 4384  
PG 730
- SHARON A VOGELSONG  
DB 4384  
PG 730
- JERRY L FAIR  
JANNIE L FAIR  
DB 43  
PG 1775
- WALD E MARTIN  
MARY J MARTIN  
DB 3413  
PG 870
- PATRICIA A KEHOE  
DB 4104  
PG 212
- ARTHUR F EDMUNDS  
VELLIE M EDMUNDS  
DB 3740  
PG 412
- JEAN ADDINGTON  
DB 3959  
PG 892
- HARRIET SADLER  
DB 3920  
PG 18
- WILLIAM K McLAUGHLIN  
DB 4320  
PG 1667
- DEWELL E CARLENE M TARTER  
DB 4178  
PG 1041
- JAMES FRANCIS  
DB 2712  
PG 356

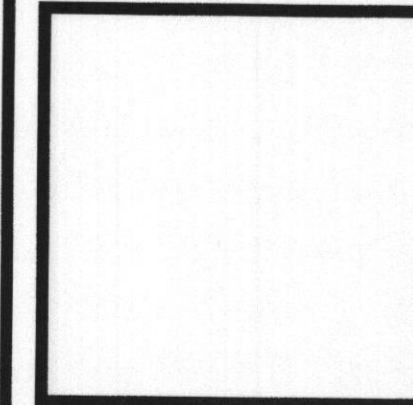
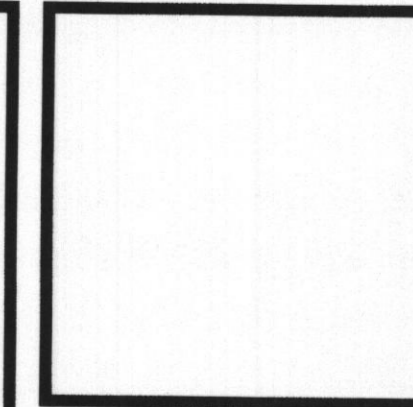
OWNER & DEVELOPER  
KENWOOD BAPTIST CHURCH  
JOHN KIRBY - BUSINESS MGR  
8341 KENWOOD ROAD  
CINCINNATI, OHIO 45236  
913-791-0355

THE 15" SAN SEWERAGEMENT  
WILL BE SHOWN ON A SEPARATE PLAN

BM # 4104 GALBRAITH FROLIC DR.  
ELEV: 835.980  
TBM - SW CORNER OF BOX STRUCTURE  
AT KENWOOD RD. ELEV: 807.52

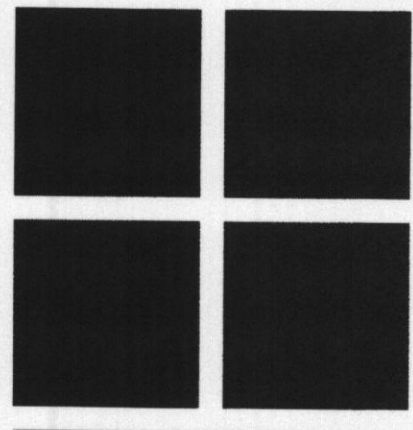
NOTE -  
EXISTING OVERHEAD ELECTRIC  
SHALL BE ABANDONED AND  
REPLACED WITH UNDERGROUND  
ELECTRIC AS SHOWN ON  
SHEET C-4

NOTE:  
SURVEY INFORMATION TAKEN FROM DRAWING  
PRODUCED BY WOOLPERT CONSULTANTS DATED  
4-18-88 FOR PREVIOUS ADDITION PROJECT.



**Architects Plus**  
10816 MILLIKEN CT. CINCINNATI, OHIO 45242 513-864-1070 FAX 513-864-1088

**Kenwood Baptist Church**  
Cincinnati, Ohio  
8341 KENWOOD ROAD



Revisions

|                 |             |
|-----------------|-------------|
| Drawn by:<br>RG | Checked by: |
|-----------------|-------------|

|                   |                |
|-------------------|----------------|
| Date:<br>05/19/11 | Job #<br>11012 |
|-------------------|----------------|

**SP-1**