

**REAR ELEVATION**  
SCALE: 1/4" = 1'-0"

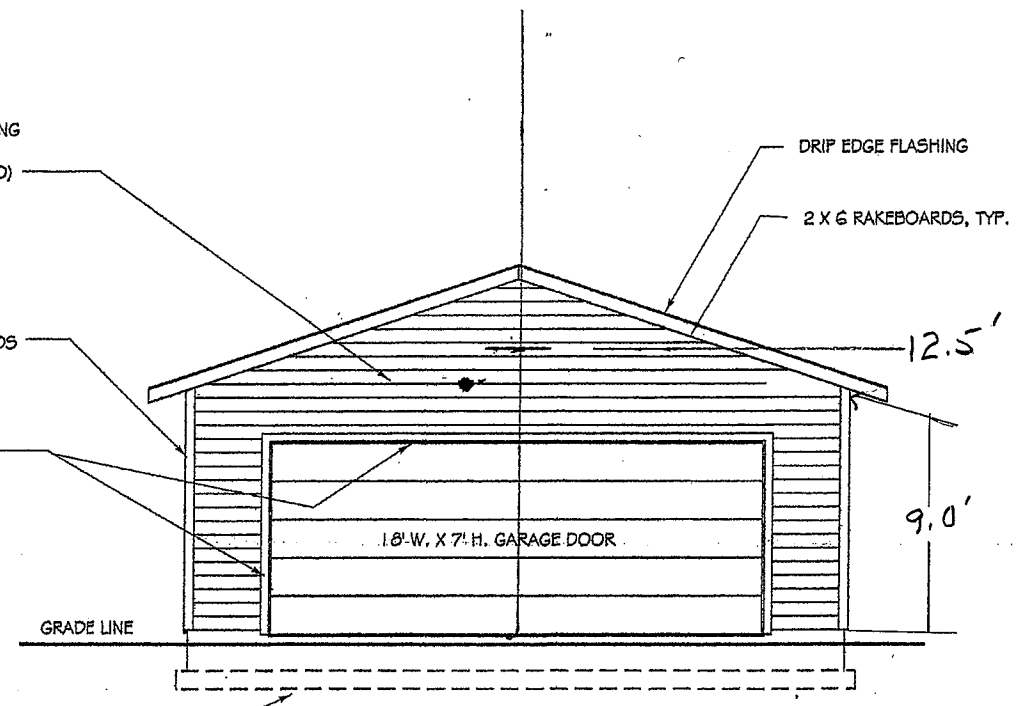
SIDING:  
8" X 7/16" TEXTURED O.S.B.  
SIDING BOARDS, OVER 7# FELT  
VAPOR BARRIER, OVER SHEATHING  
(APPROVED ALTERNATE SIDING  
MATERIALS MAY BE SUBSTITUTED)

ALTERNATE SIDING:  
7/16" TEXTURED O.S.B SIDING  
PANELS OVER 7# FELT  
VAPOR BARRIER

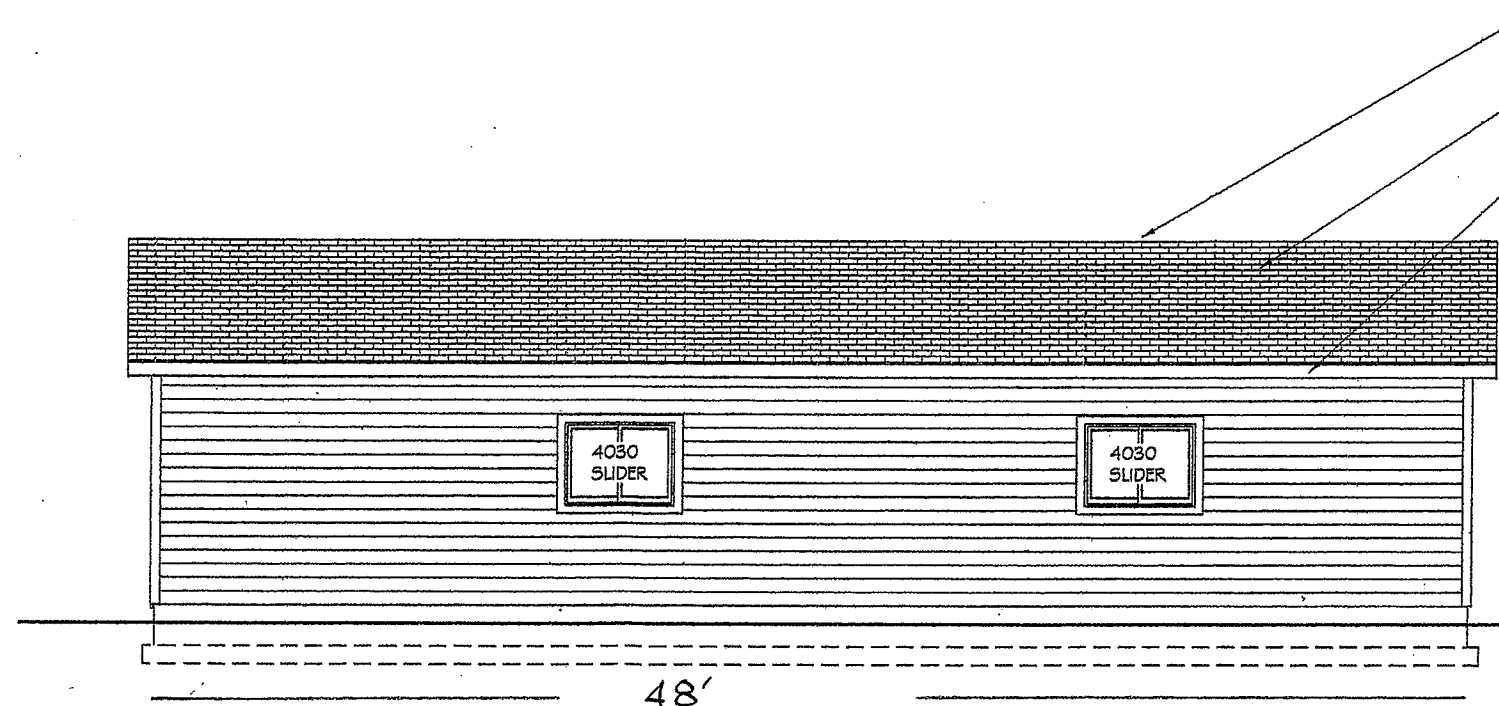
5/4 X 4 / 5/4 X 3 CORNER BOARDS

5/4 X 4 WRAP TRIM - BUTT SIDE  
MEMBERS TO TOP AND BOTTOM  
MEMBERS

NOTE:  
FOR ALTERNATIVE SIDING  
USE 1" TRIM BOARDS - NAIL  
OVER SIDING PANELS, TYP.



**FRONT ELEVATION**  
SCALE: 1/4" = 1'-0"



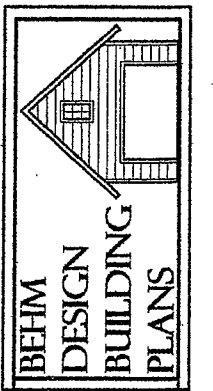
**RIGHT SIDE ELEVATION**  
SCALE: 1/4" = 1'-0"

RIDGEVENT, CONT.  
COMPOSITION ROOFING  
1 X 6 FASCIA, TYP.

NOTE:  
NOMINAL WINDOW SIZES ARE  
SHOWN: FEET/INCHES WIDE  
X FEET/INCHES HIGH, TYP. -  
VERIFY FRAMED OPENING  
REQUIRED BY PRODUCT MFR.

NOTE:  
FLASH OPENINGS AND PROVIDE  
WEATHERSTRIPPING AS REQUIRED  
BY LOCAL CODES

NOTE:  
NOTES AND MATERIALS INDICATED  
IN THIS ELEVATION ARE TYPICAL  
FOR ENTIRE BUILDING AS APPLIC.



QUESTIONER: CALL  
1-800-210-6776  
WWW.BEHMDSIGN.COM

PLAN NO.  
**1152-3**

DESIGN BY: JB  
DATE: 10/14/05

SHEET CONTENTS:  
FRONT ELEVATION  
REAR ELEVATION  
RIGHT SIDE ELEVATION

SHEET  
**4**  
OF **9**

SYCAMORE TOWNSHIP  
PLANNING & ZONING  
JAN 30 2012  
RECEIVED

COPYRIGHT 2005 BEHM DESIGN