

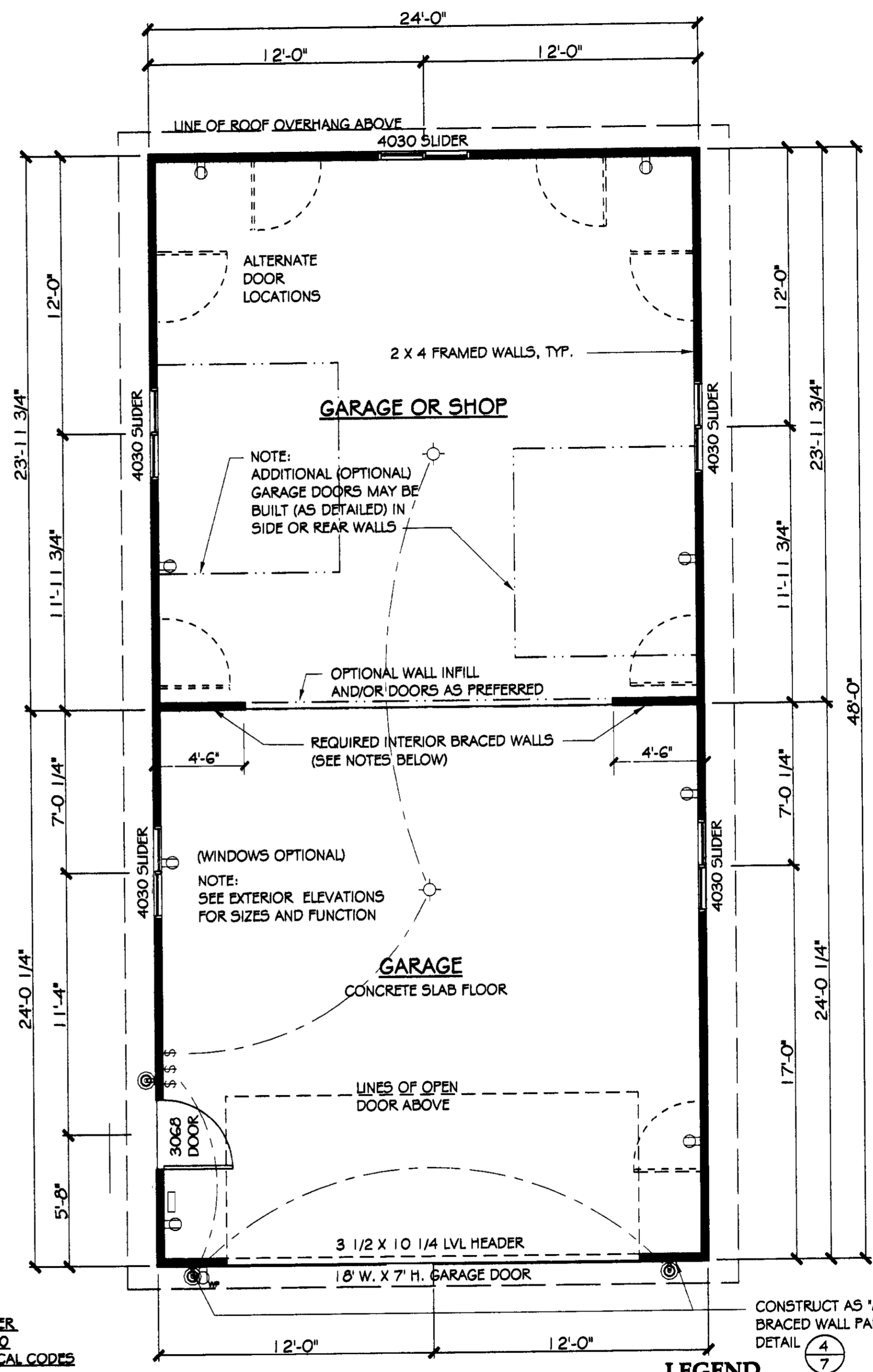
FOUNDATION PLAN
SCALE: 1/4" = 1'-0"

NOTE: FOUNDATION PLAN DIMENSIONS ARE TO FACE OF CONCRETE OR CENTERLINE OF BEARING, AS SHOWN

BRACED WALLS AS PER IRC R602.10 APPLICABLE FOR LOCAL CODES

EFFECTIVE BRACED WALLS PANELS - (SHOWN: - - - - -)
NAIL SIDING PANELS OR SHEATHING W/ 8d @ 6" o.c., EDGES AND @ 12" O.C., FIELD TO WALL FRAMING (MIN. 48" OR 3 STUD SPACES)

INTERIOR BRACED WALLS FRAMED W/ 2 X 4 STUDS @ 16" O.C. W/ DOUBLE TOP PLATE AND PRESSURE-TREATED BOTTOM PLATE. SHEATH WITH 7/16" O.S.B. AND NAIL W/ 8d @ 6" o.c., EDGES AND @ 12" O.C., FIELD - ATTACH TO FLOOR AND CEILING AS PER DETAILS (5/6) (6/6)



NOTE: DOOR AND WINDOW HEADERS SHALL BE 2- 2 X 6 UNLESS OTHERWISE NOTED

FLOOR PLAN

SCALE: 1/4" = 1'-0"
NOTE: FLOOR PLAN DIMENSIONS ARE TO FACE OF FRAMING OR CENTERLINE OF BEARING, TYP. AS SHOWN

LEGEND

- \$ SWITCH LOCATION
- CEILING MOUNTED LIGHT FIXTURE
- ⊕ 110 VOLT DUPLEX OUTLET
- ⊙ EXTERIOR WALL-MTD. LIGHT FIXTURE
- ELECTRIC PANEL OR SUB-PANEL LOCATION, INSTALL PER LOCAL CODES