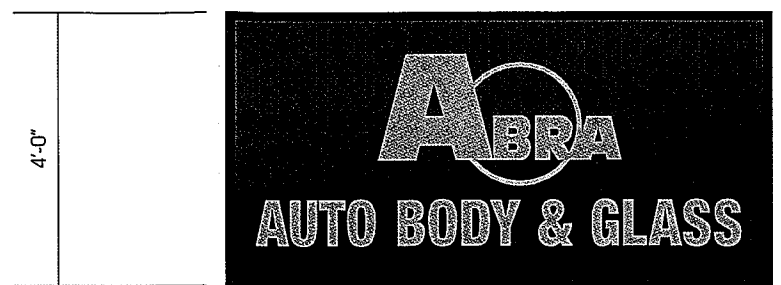
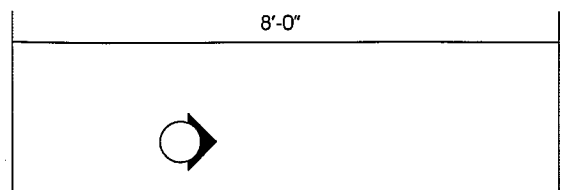
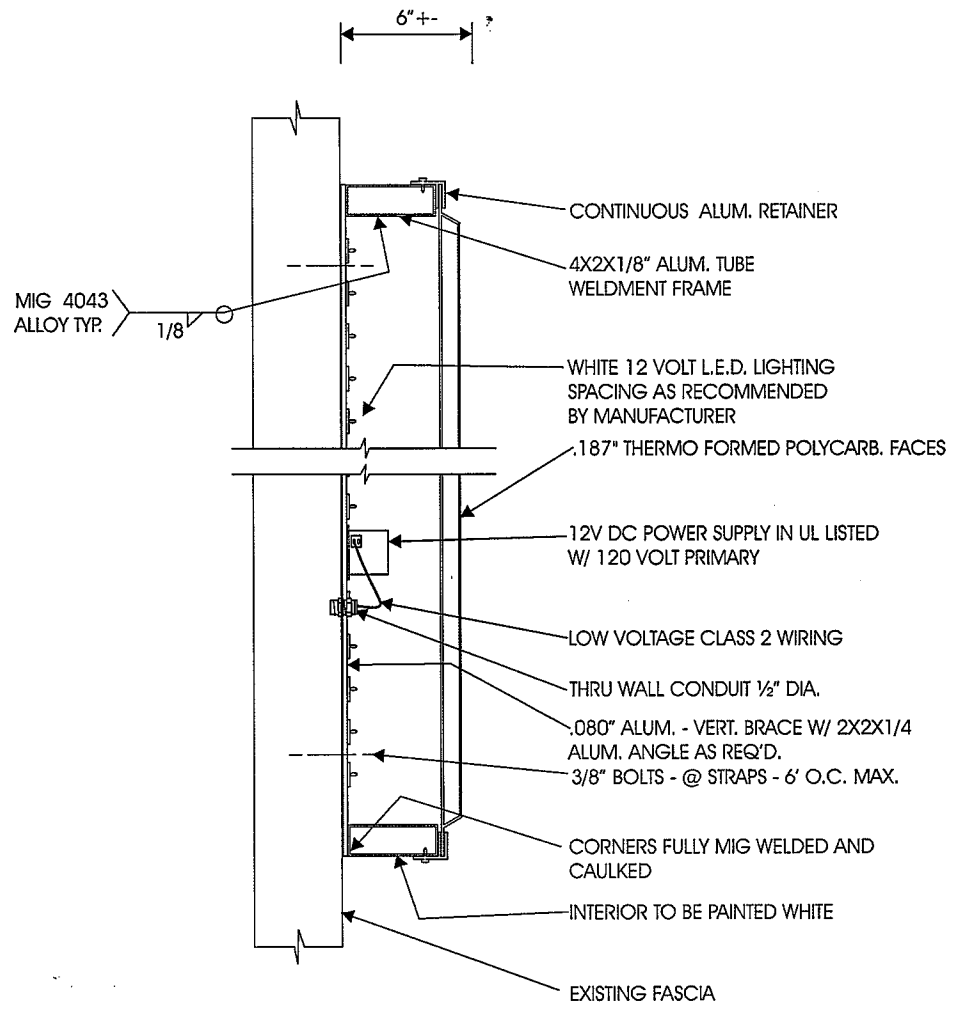


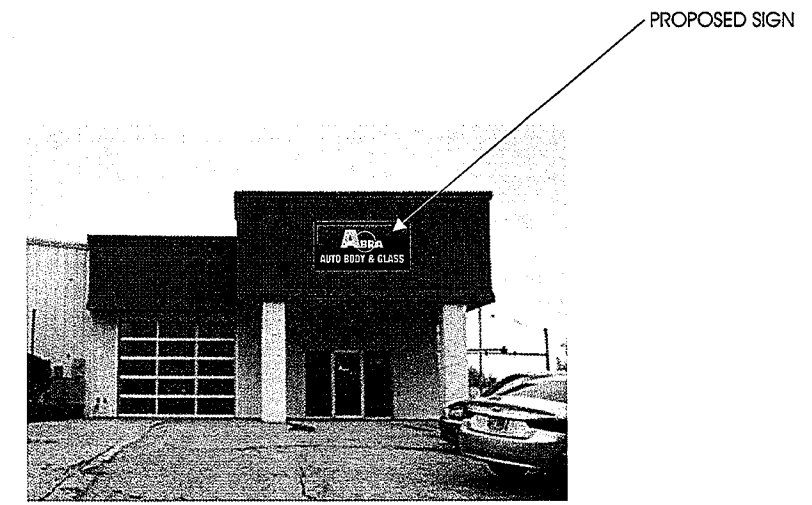
SYCAMORE TOWNSHIP
PLANNING & ZONING
JUL 22 2015
RECEIVED



SIGN ELEVATION
SCALE: 3/8" = 1'-0"



VERTICAL SECTION
SCALE: 1 1/2" = 1'-0"



BUILDING ELEVATION
NTS

SPECIFICATIONS

- 1) SIGN TO BE U.L. LISTED AND HAVE SEAL AFFIXED TO THE UNIT
- 2) ELECTRIC WIRING AND DEVICES SHALL BE INSTALLED IN ACCORDANCE WITH 2013 OBC AND NFPA70
- 3) SIGN SHALL BEAR THE MANUFACTURER'S MARKINGS (HLS) AND SHALL BE MAINTAINED BY HLS
- 4) ACRYLIC FACES SHALL CONFORM TO ASTM D635 SPECIFICATIONS
- 5) PROPOSED MAXIMUM SIGN WT. = 75#
- 6) ALL EXPOSED METAL NON-PLATED SURFACES TO BE FINISHED W/ CATALYZED ACRYLIC POLYURETHANE ENAMEL PAINT.
- 7) GRAPHIC LAYOUT & COLORS PER CUSTOMER SPEC'S.
- 8) ALUMINUM SHEET SHALL BE 5052 ALLOY
- 9) ALL WELDS SHALL BE MADE WITH ALLOY 4043 FILLER
- 10) ALL BOLTS SHALL BE CONFORM TO ASTM A307, SAE J429 OR EQUAL

DESIGN LOADS

2013 OBC
BASIC WIND SPEED (3SECOND GUST) = 115 MPH
WIND EXPOSURE C
DESIGN WIND PRESSURE = 28.3 PSF
WIND LOADS CONTROL DESIGN OVER SEISMIC LOADS

HLS HOLTHAUSLACKNER SIGNS		
SCALE: NOTED	APPROVED BY:	DRAWN BY: Rct
DATE: 1-22-15		REVISED:
PROPOSED WALL SIGN		
ABRA AUTO BODY & GLASS SYCAMORE		DRAWING NUMBER 0753-2