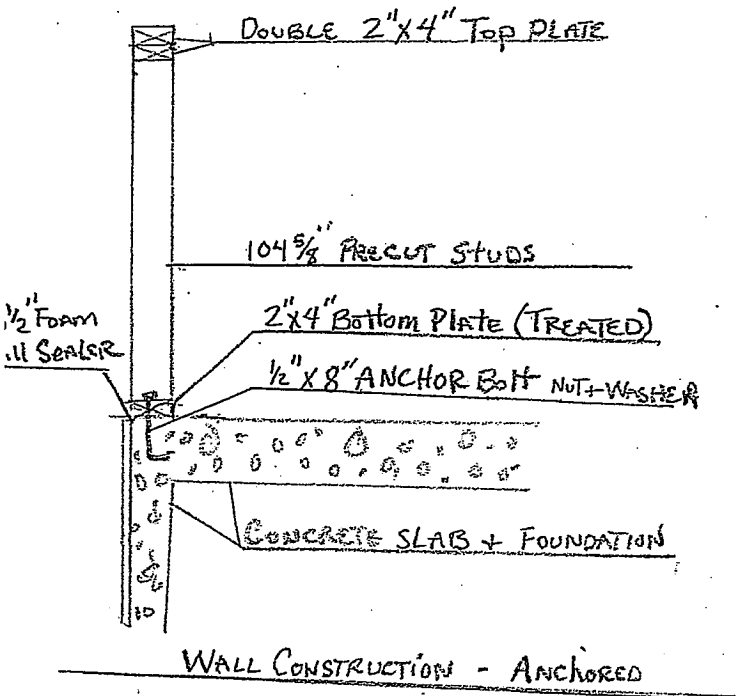
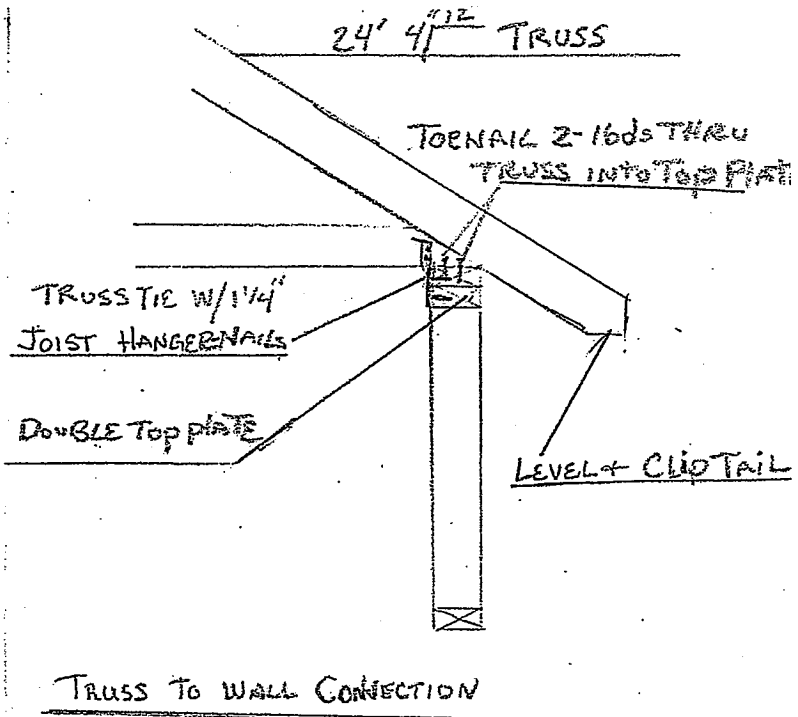


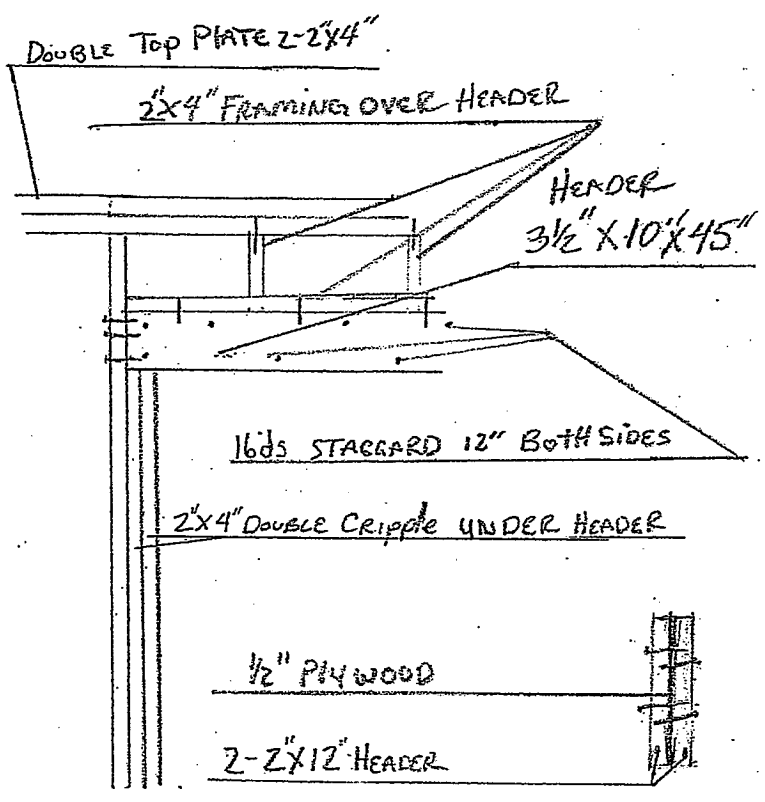
(TREATED) PLATE + FLOOR PLAN



1

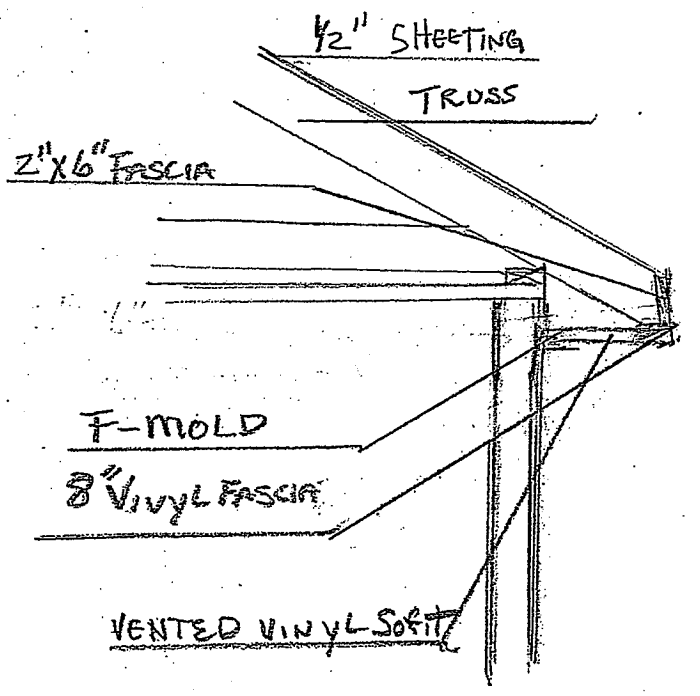


2



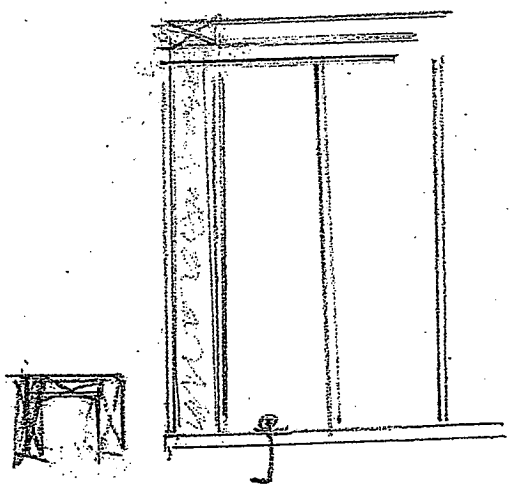
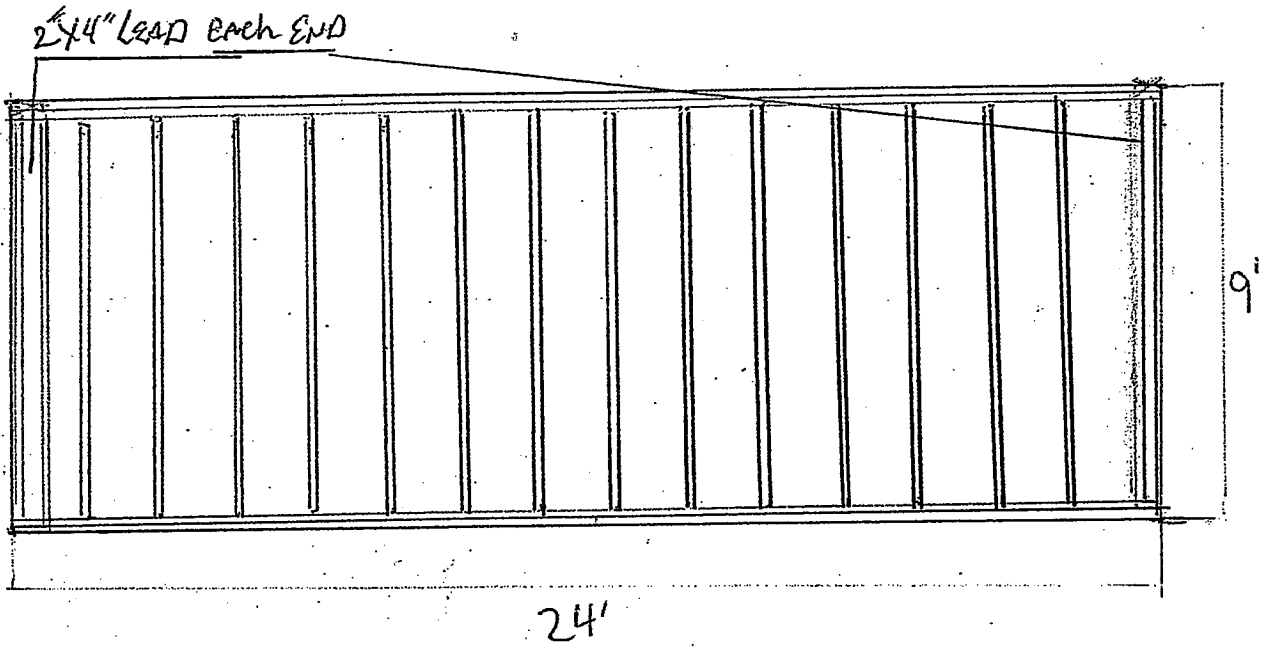
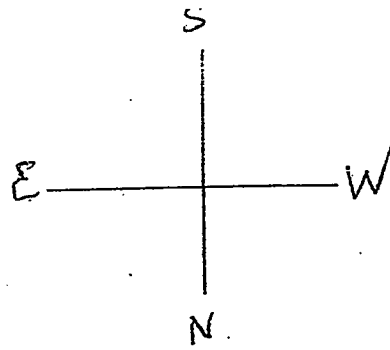
3

HEADER + CRIPPLE DETAIL



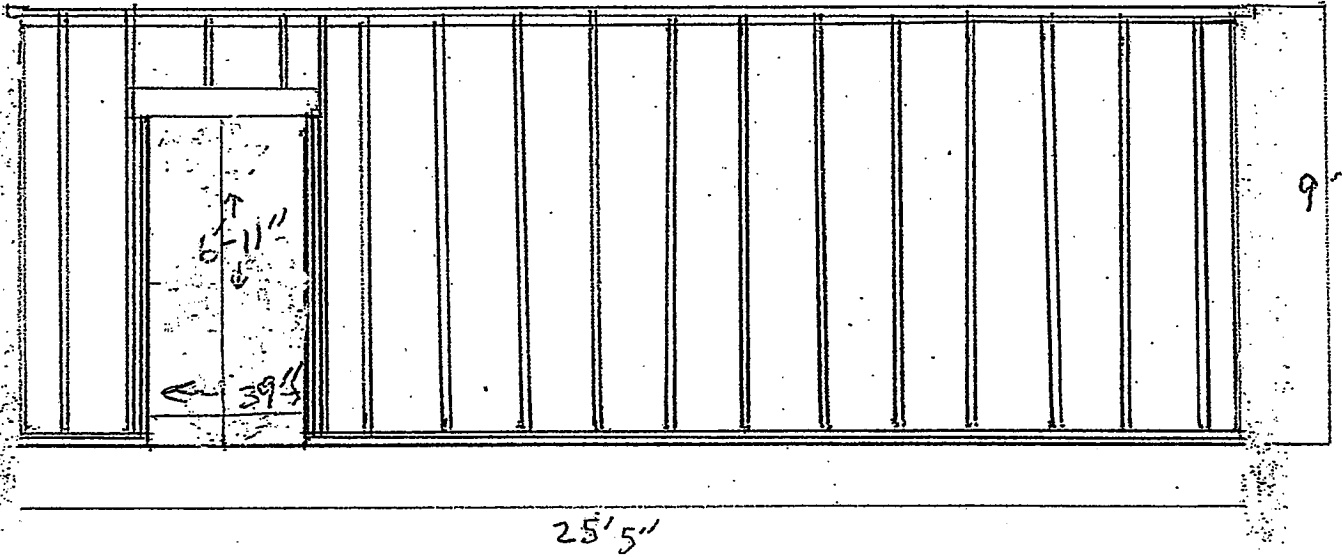
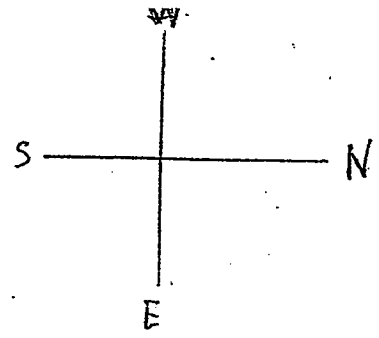
4

SOFFIT DETAIL

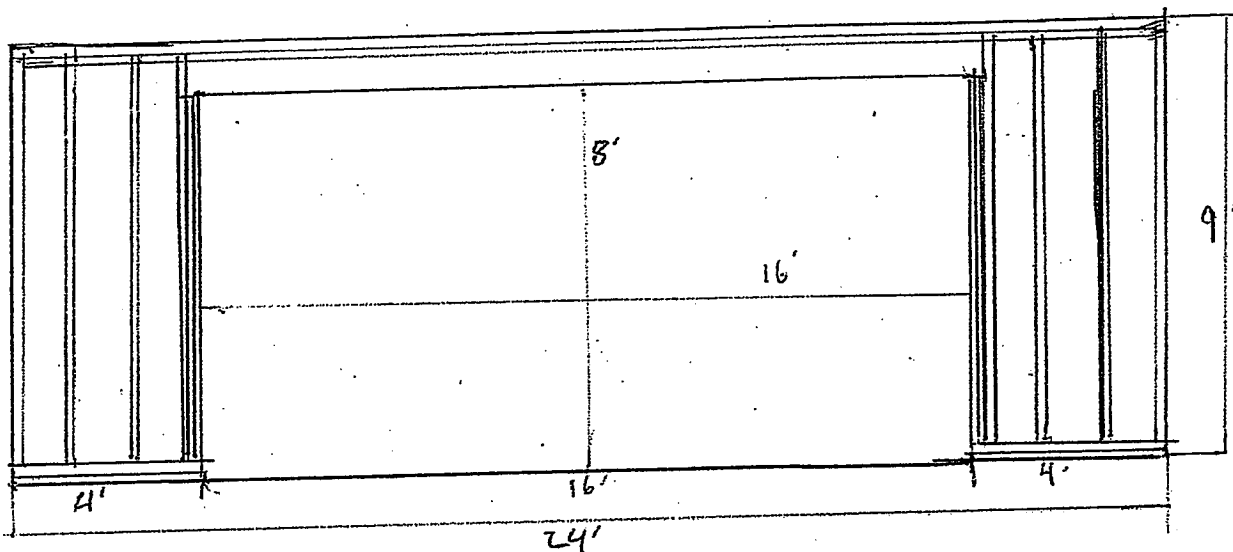
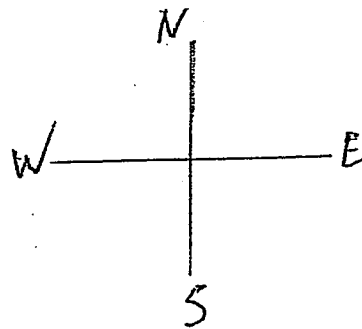


3'-2"x4" CONSTRUCTED LEAD

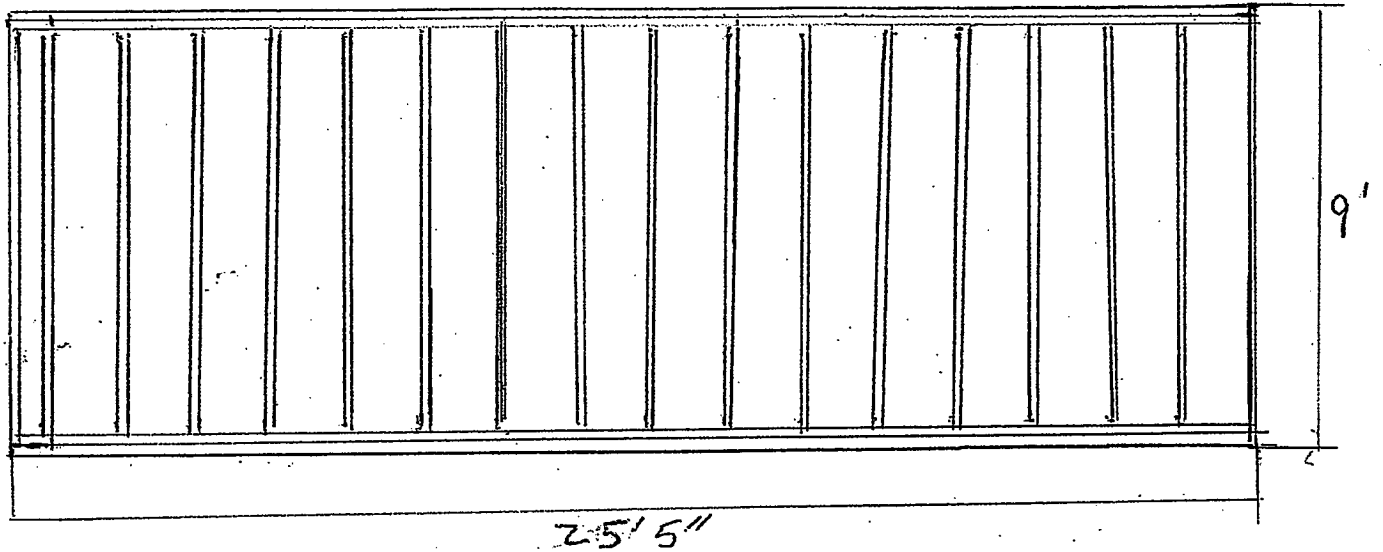
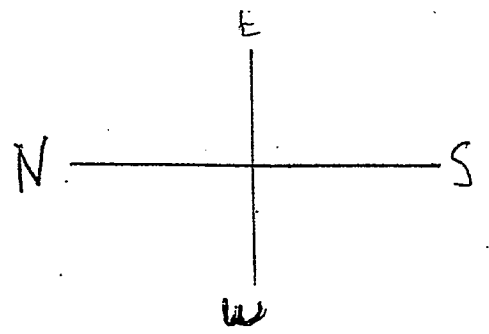
NORTH - REAR WALL VIEW



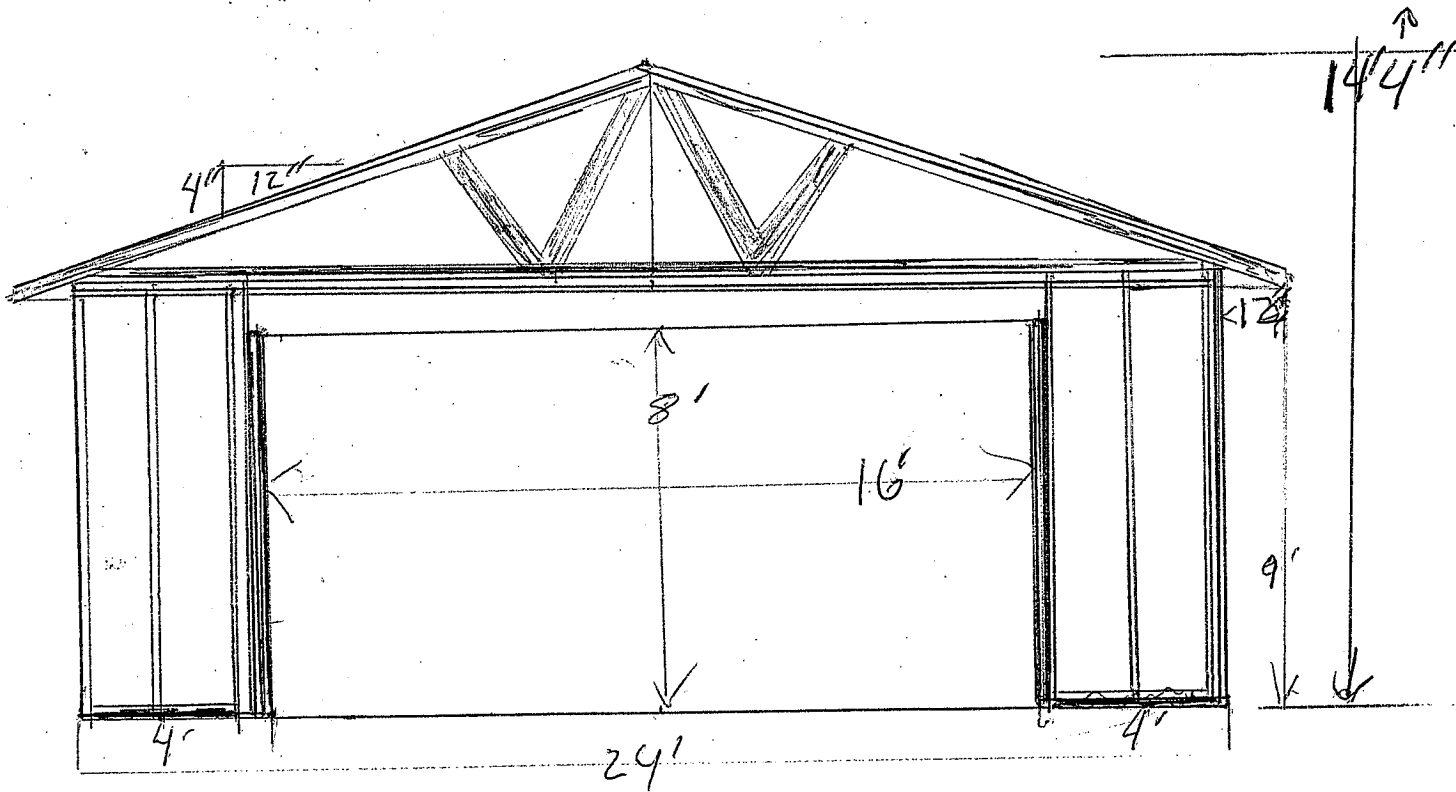
Right Side - East Wall View

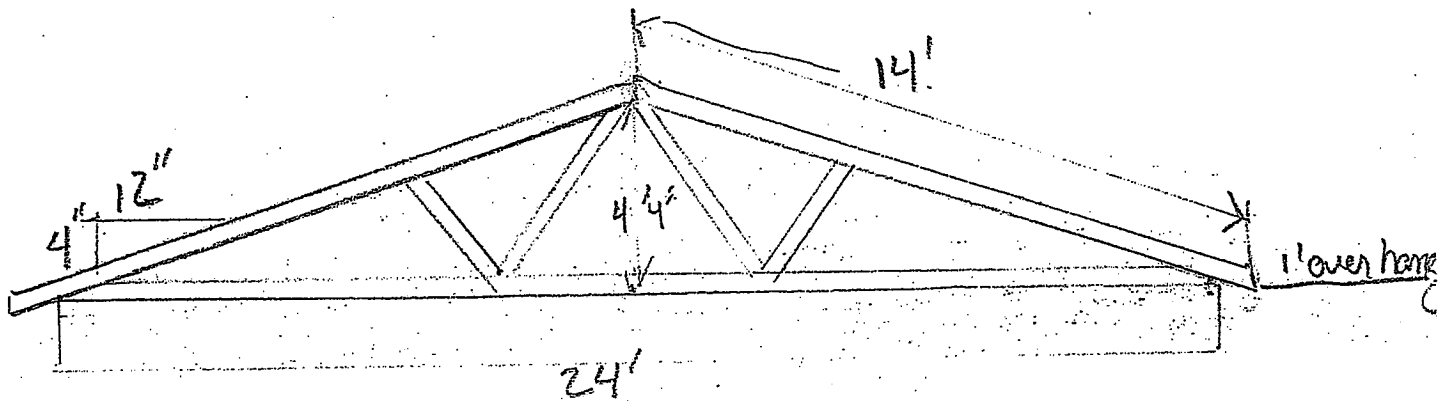


SOUTH - FRONT VIEW

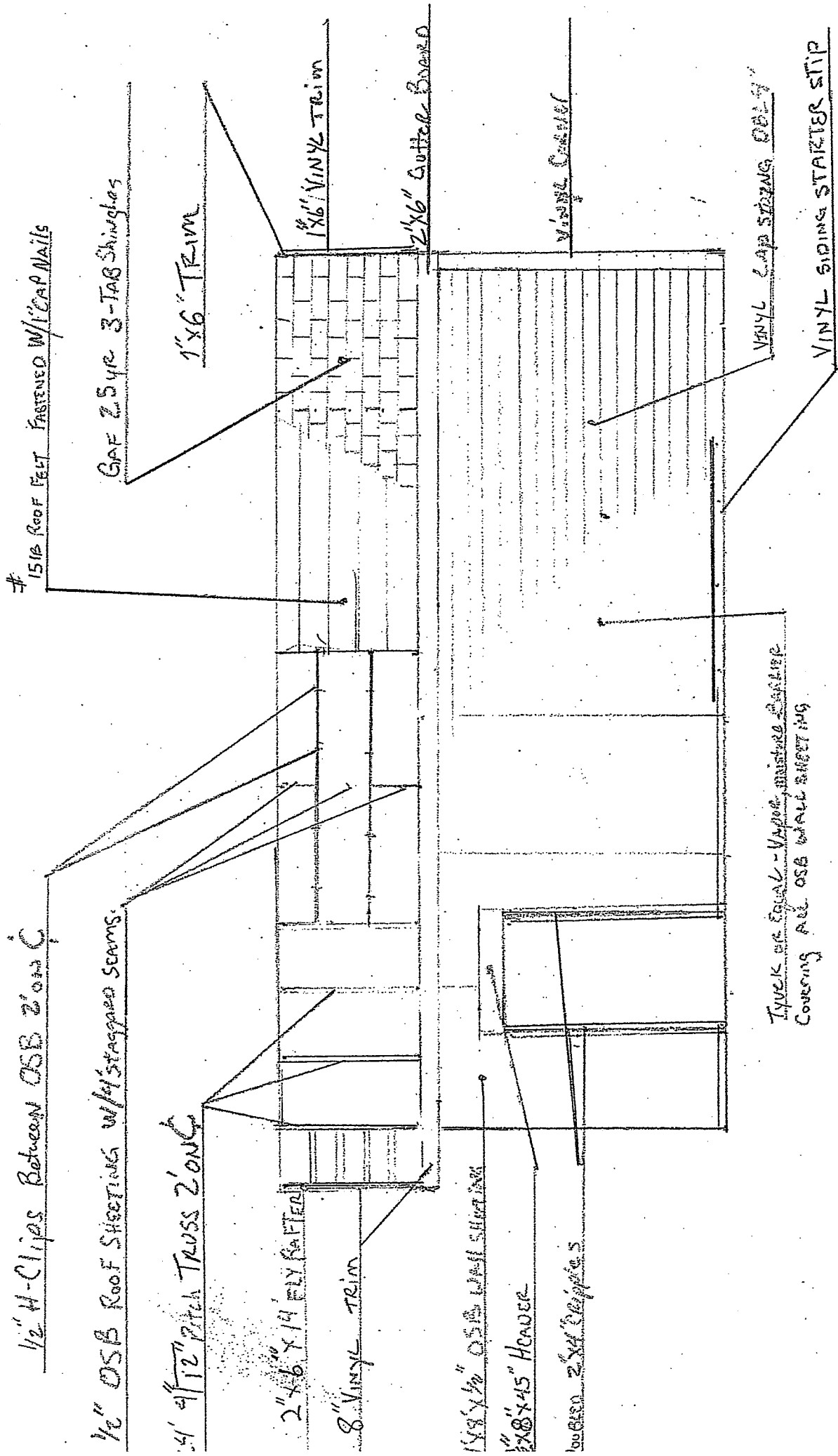
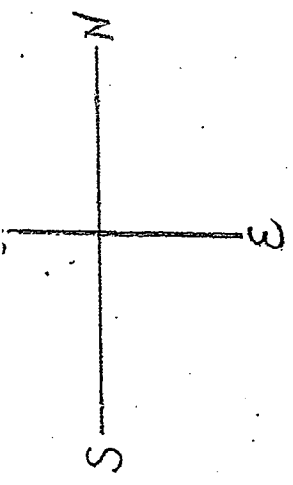


West LEFT SIDE VIEW





14- 24' TRUSSES $4 \frac{11}{12}$ " PITCH
 with 1' overhang AT EACH END
 2' ON CENTER



15lb ROOF FELT FASTENED W/ 1" CAP NAILS

GAF 25yr 3-TAB Shingles

1"X6" TRIM

1"X6" VINYL TRIM

2"X6" GUTTER BOARD

VINYL CAP SIDING

VINYL CAP SIDING ONLY

VINYL SIDING STARTER STRIP

1/2" H-CLIPS BETWEEN OSB 2' ON C

1/2" OSB ROOF SHEATHING W/ 1/4" STAGGERED SEAMS

4" 4x12" PITCH TRUSS 2' ON C

2"X6" X 14" FLY RAFTERS

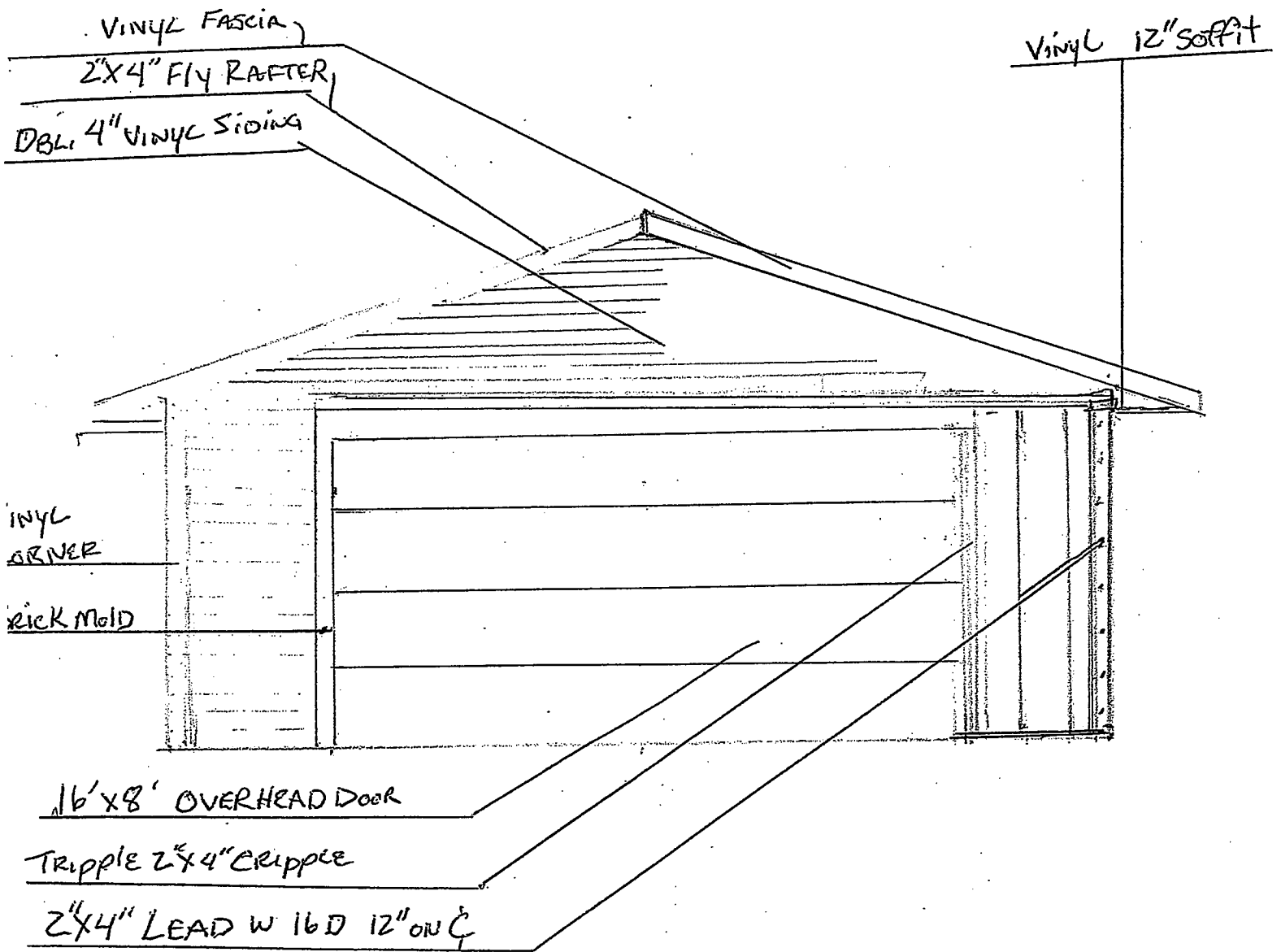
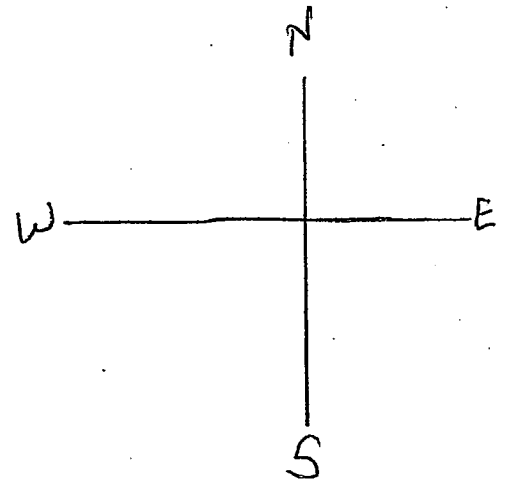
8" VINYL TRIM

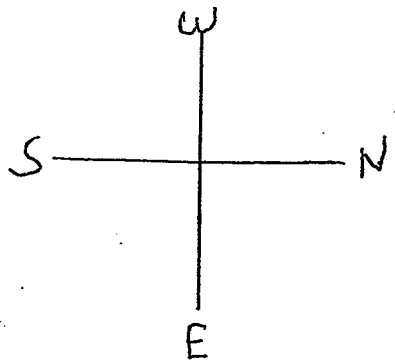
1X8 X 1/2" OSB WALL SHEATHING

1"X8" X 15" HEADER

2X4 CLIPS

1/2" EQUAL - VAPOR BARRIER SHEATHING COVERING ALL OSB WALL SHEATHING





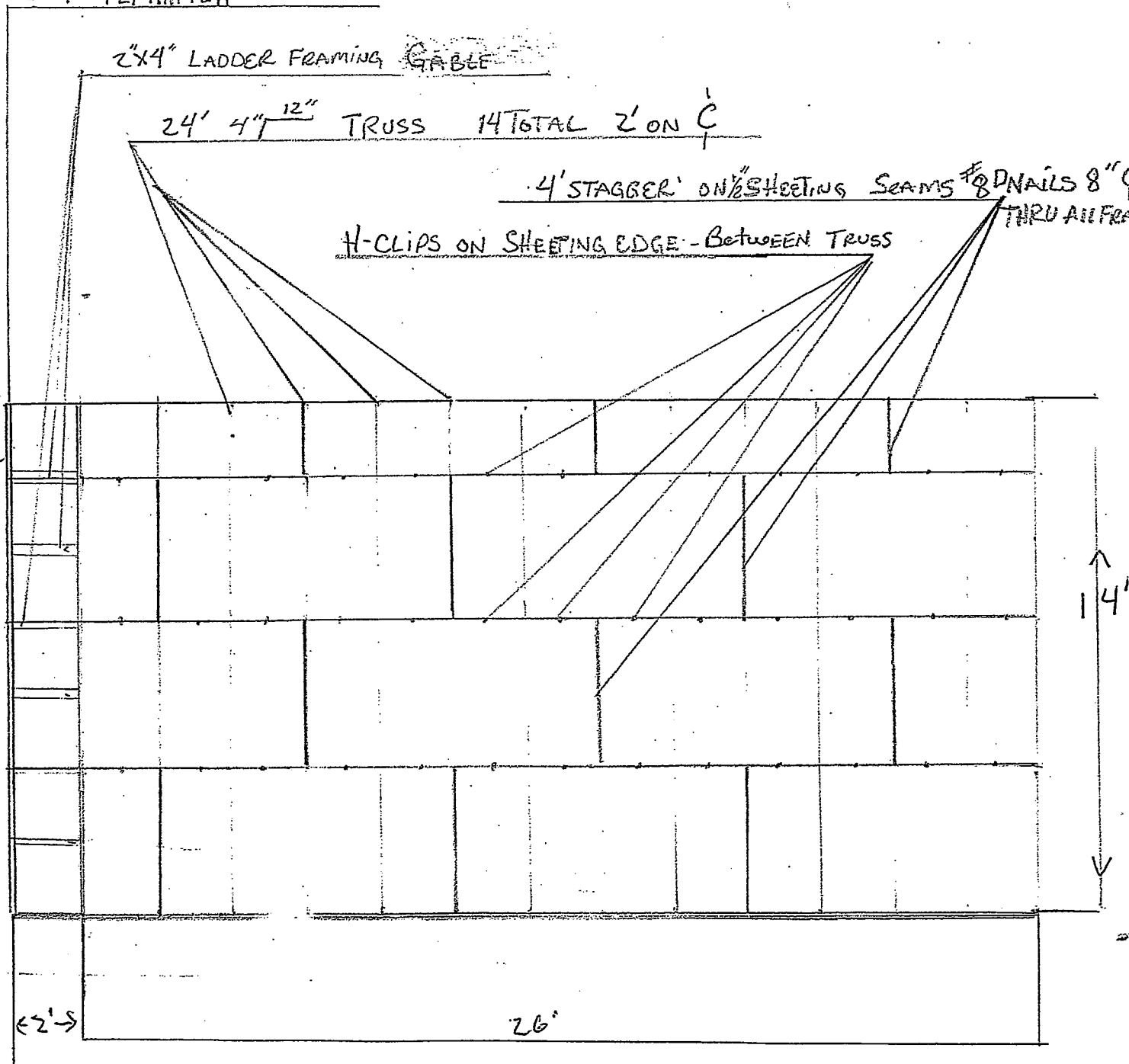
2"X4" FLY RAFTER

2"X4" LADDER FRAMING GABLE

24' 4" ^{12"} TRUSS 14 TOTAL 2' ON C

4' STAGGER ON SHEETING SEAMS #8 DNAILS 8" C THRU ALL FRAMES

H-CLIPS ON SHEETING EDGE - BETWEEN TRUSS



Roof Sheeting Detail EAST SIDE

Material List for 24'x26' Framed Garage

- | | |
|--|--|
| 1. 2- Rolls 3 -1/2"x50' | Sill sealer. |
| 2. 4- 2"x4"x16' | (treated) sill plate. |
| 3. 2- 2"x4"x10' | (treated) sill plate. |
| 4. 96- 2"x4"x104 5/8" | precut wall studs SPF. |
| 5. 12- 2"x4"x16' | Top plate SPF. |
| 6. 6- 2"x4"x10' | Top plate SPF. |
| 7. 2- 2"x4"x14' | Fly rafter SPF. |
| 8. 4- 2"x4"x16' | Lateral bracing SPF. |
| 9. 4- 2"x4"x10' | Lateral bracing SPF. |
| 10. 1- 2"x10"x8' | service door header FIR. |
| 11. 2- 2"x12"x18' | overhead door header FIR. |
| 12. 55- 4'x8"x1/2" | wall & roof sheeting OSB. |
| 13. 2- 1"x6"x16' | Fascia board (rear gable) |
| 14. 4- 2"x6"x16' | Fascia boards. |
| 15. 3- 2"x6"x12' | fascia boards. |
| 16. 12- 24' std. 4/12 | prebuilt 2' on c Common truss. |
| 17. 2- 24' std. 4/12 | Prebuilt 2' on c end frame truss. |
| 18. 24- rafter ties | RT 15 TZ rafter ties. |
| 19. 1-5 lbs box | 1-1/4" joist hanger nails. |
| 20. 2- Rolls 9'x75' | Block it house wrap. |
| 21. 10- 12' "Ade" | aluminum drip edge. |
| 22. 2- 1 1/4" x10' | Drip cap. |
| 23. 9- 10' | vinyl lap starter strip. |
| 24. 110- 12'6" pieces | dbl. 4" cedar creek .040 vinyl siding. |
| 25. 4- 10' osc 5/8" | vinyl outside corner. |
| 26. 10- 12"x12' | vented vinyl siding. |
| 27. 13- 12'6"x 5/8" | vinyl j-mold. |
| 28. 6- 10' | vinyl under sill trim. |
| 29. 5- 12' 6" | vinyl f- channel. |
| 30. 10- 8"x12'6" | vinyl fascia. |
| 31. 4- 10'x5 3/16" | vinyl jamb. |
| 32. 2- 9' | vinyl overhead door stop. |
| 33. 1- 16' | vinyl overhead door stop. |
| 34. 2- 10'x1 1/4"x2" | vinyl brick mold. |
| 35. 1- 17'x1 1/4"x2" | vinyl brick mold. |
| 36. 1- 36"x80" | Flush steel service door. |
| 37. 1- Service door lock set. | |
| 38. 1- Keyed lock set for overhead door. | |
| 39. 1- Ideal rear track hanger kit. | |
| 40. 1- MSESV.16'x8' Insulated overhead door. | |

41. 1- 16'x7'6" EZ Set torsion option.
42. 4 tubes white painters caulk.
43. 9- square - 27 bundles (estate gray) Duration shingles.
44. 3- Rolls #15 lbs. felt paper.
45. 2- Rolls 7"x33' shingle starter strip.
46. 1- bundle H&R precut cap shingles.
47. 1- 5lbs. box 1 1/2" vinyl siding nails.
48. 200- 1/2" h-clips *
49. 1- 5lbs. box 8D sinkers nails *
50. 1- 25 lbs. box 16D sinkers nails *
51. 1- 1lbs. box galvanized 6D box nails.
52. 1- 5lbs. box galvanized 16D nails.
53. 1- 1lbs. box galv. Casing nails. *
54. 1- 25lbs. box 1 1/4" galv. Roofing nails. *
55. 1 box 5/16" staples. *

Scope of work.

1. Measure & mark foundation 24'x26'. Check for square, Chalk lines on perimeter of layout.
2. Lay out & cut treated bottom plates at perimeter and drill holes to accept ½' anchor bolts (anchors are installed by concrete crew, 6' on center max) check to see that plates fit correctly.
3. Start with the back wall. (north wall) Cut the lower top plate the same length as the treated bottom plate. Mark stud layout on treated bottom plate 16" on center. Use a square to transfer lines onto lower top plate.
4. Frame wall by placing pre-cut studs 16-1/2" between marked plates. Hold studs on 16" marks and fasten plates to studs with 2 #16 D nails thru plates into the ends of each stud. Build a lead at each end of 24' wall to accept adjoining walls.
5. Place sill sealer along perimeter line over anchors. Sill sealer to be installed between concrete and treated bottom sill.
6. After wall is framed position wall over anchor bolts. Install a washer & nut to each anchor and tighten. Plum wall with temporary bracing.
7. Layoff side walls (east & west) using same plate to anchor plate to stud method. Start layoff with 3-1/2" overhang to keep 16" on center from outside edge of adjoining walls. Pay close attention to location of double cripples and 3-1/2"x10"x45" header in east wall for service door (rough opening 39"x6'11")
8. Stand walls one at a time. Fasten to anchors using flat washers & nuts. Hold walls plum with temporary bracing. Attach east & west walls to leads on north wall with 3" 16d nails every 12" thru end stud into lead and thru lead into stud
9. Build front wall with a lead at each end to accept adjoining walls set 3-1/2"x12"x16'9" header at 8'-1/2' high. Stand wall over anchors attach with nuts and washers. Fasten to leads every 12" in both directions.
10. Place a second top plate on top of wall perimeter with ends overlapping at corners in lower top plate. Fasten with 16 d nails.
11. Measure & mark top plate for truss setting at 2' on center.
12. Nail 3 evenly spaced 2'x4's to outside of back wall (north wall) extending 3' above top of wall for temporary gable support
13. Start with an end gable truss. Set truss on north wall top plate and attach with 3" 16d nails every 12" toenailed thru both sides of truss into top plate. Plum and hold in place with temporary bracing
14. Place next truss on top plates. Toenail both sides of truss to top plate. Brace & space 1st truss to second truss at center and peak of truss to maintain 2' on center spacing. Attach truss ties to truss and top plate using 1" joist hanger nails continue until all trusses are set place end gable truss last.
15. Sheet walls with 4'x8'x1/2" OSB wall sheathing. Attach to all studs with #8.
16. Wrap walls with wall block or Tyvek or equivalent.
17. Install 4'x8'x1/2" roof sheathing according to plan with 4' seam stagger and ½" h-clips centered between framing. Attach with #8d nails. Leave 2' minimum overhang at front overhead door.

18. Trim off overhang at 2' and install fly rafter and 2"x4" ladder blocking between fly rafter and gable
19. Install 2"x6"x28' gutter boards. Install vinyl fascia on gutter board & gable trim.
20. Place drip edge at bottom of roof line along gutter board tac in place with a few roofing nails
21. Lay #15lb felt paper on roof sheeting. Fasten with 1" cap nails.
22. Measure and mark shingle layoff according to manufacture installation instructions. Lay shingles. Install cap. All shingles will be fastened with 1 1/2" coil nails.
23. If still present, cut and remove sill plate at service door opening. Lay a bead of caulk in opening under threshold. Plum and shim service door in place. Fasten door with trim screws thru jamb, shims and brick mold. Install lock and knob. Then trim around overhead door opening.
24. Install vinyl corners to all four outside corners. Install vinyl siding starter strip at bottom of walls. Put J-Mold around door trim be sure to put drip cap over door under j-mold. Install double 4" vinyl siding. Determine where the soffit will tie into the wall using a 2' level. Level from the bottom of vinyl fascia to the wall. Mark at both ends of each wall and chalk a line. Now install along this line a termination strip to cap siding. And install F-mold to accept soffit. Cut vented vinyl soffit pieces 3/8" smaller to allow for expansion install soffit.
25. Install overhead door according to manufacture installation instructions.