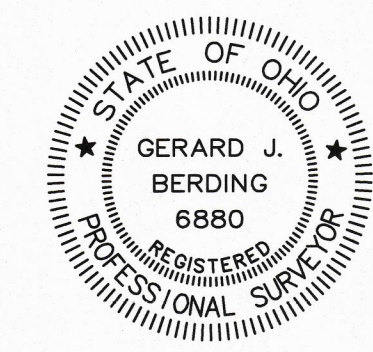
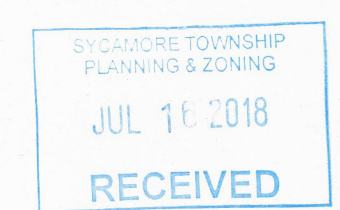


- LEGEND**
- BOLLARD
 - SIGN
 - STEEL POST
 - 4"x4" WOOD POST
 - 7"x7" OVERHEAD SIGN POST
 - 12"x6" OVERHEAD SIGN POST
 - CLEANOUT
 - ⊕ ELECTRIC METER
 - ⊕ WATER METER
 - ⊕ FIRE DEPARTMENT CONNECTION
 - ⊕ CATCH BASIN
 - ⊕ POLE ANCHOR
 - ⊕ POWER POLE
 - ⊕ HANDICAP PARKING SPACE
 - ⊕ ORIGIN OR OUTLET UNDETERMINED
 - TREE - DECIDUOUS
 - ▭ BUILDING
 - ▭ GRAVEL
 - ▭ CONCRETE
 - ▭ ASPHALT
 - EDGE OF WOODS
 - FENCE
 - OVERHANG
 - OVERHEAD UTILITIES
 - 6" PVC STORM LINE/SIZE/TYP

Note:
Contours shown hereon are from the Cincinnati Area Geographical Information System (CAGIS)



Gerard J. Berding
Gerard J. Berding, P.S. - 6880
berding@berdingsurveying.com
06/22/2018
Date



OCCUPATION
As Shown On Plat

Site Survey
Survey Type

K.B.A.
8175 Hetz Drive
Job Name

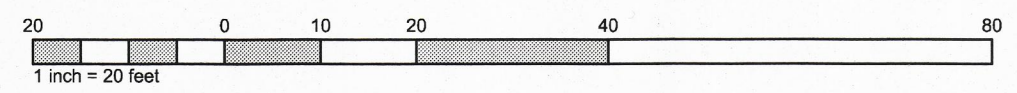
Section 5, Town 4
Entire Rante 1
Sycamore Township
Hamilton County, Ohio
Site Location

MML | GJB | 1" = 20'
Drawn By | Checked By | Drawing Scale

06/22/2018 | 18079
Issue Date | Project Number

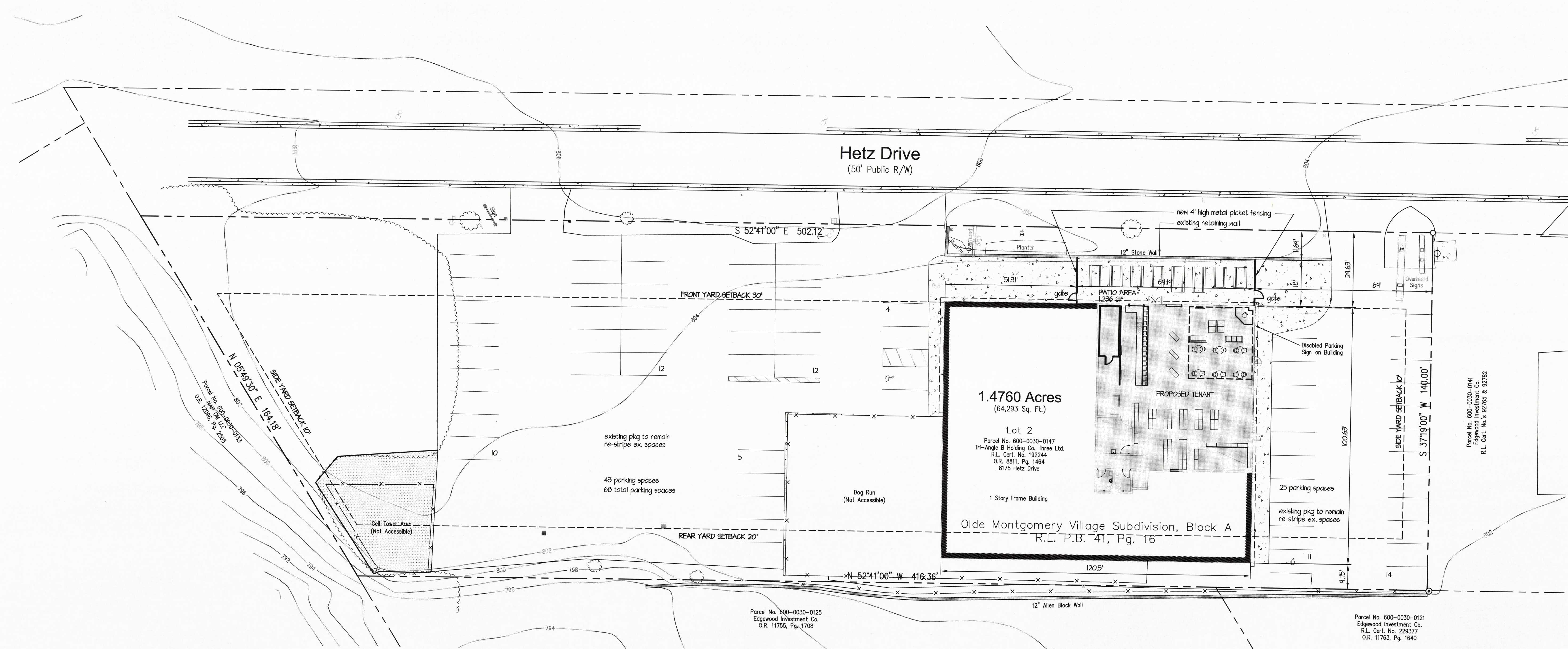
○ Indicates existing 3/4" Iron Pin
○ Indicates existing 1" Pipe-Bent

Monument Legend



Revisions

Berding Surveying
GPS Surveying • 3D Laser Scanning
741 Main Street | Milford, OH 45150 | www.berdingsurveying.com
513.831.6761 fax | 513.831.5505 tel
Copyright © 2018 G. J. Berding Surveying, Inc. All rights reserved.



ARCHITECTURAL SITE PLAN
SCALE: 1" = 20'-0"

SITE PARKING ANALYSIS		
TENANT SPACE / COMMERCIAL USE	FORMULA	TOTAL SPACES
BC BOTTLE LODGE		
RETAIL - 3,422 SF	1 SPACE / 200 SF	17
BAR SEATING - 724 SF	1 SPACE / 100 SF	8
PATIO SEATING - 1,236 SF	1 SPACE / 100 SF	13
PUPPYWOOD		
TOTAL FLOOR AREA - 8,000 SF	1 SPACE / 1000 SF	8
8 EMPLOYEES (MAX)	1 SPACE PER EMPLOYEE	8
5 KENNELS	1 SPACE PER 20 KENNELS	1
TOTAL PARKING SPACES REQUIRED		55
TOTAL PARKING SPACES PROVIDED		68



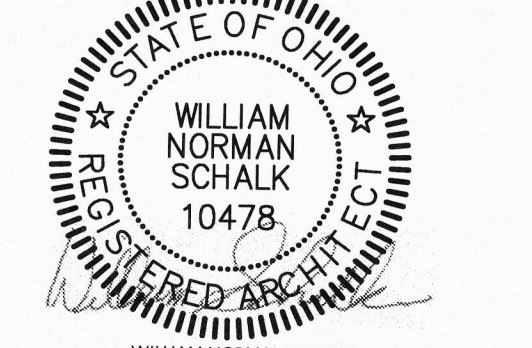
PROPOSED FENCING, BASIS OF DESIGN:
FREEDOM (ACTUAL: 4-FT X 6.02-FT)
STANDARD EASTON BLACK ALUMINUM
DECORATIVE METAL FENCE PANEL

PROPOSED FENCING EXAMPLE
SCALE: NOT TO SCALE

Proposed Exterior Patio for:
BC BOTTLE LODGE
8175 Hetz Dr.
Cincinnati, OH 45242

REV. DATE CK'D
07-16-18 ZONING VARIANCES

Drawn By: TAY Checked:



Date: 07/16/18 Job No: 17.052.1

RECEIVED
JUL 17 2018

AS-1
of