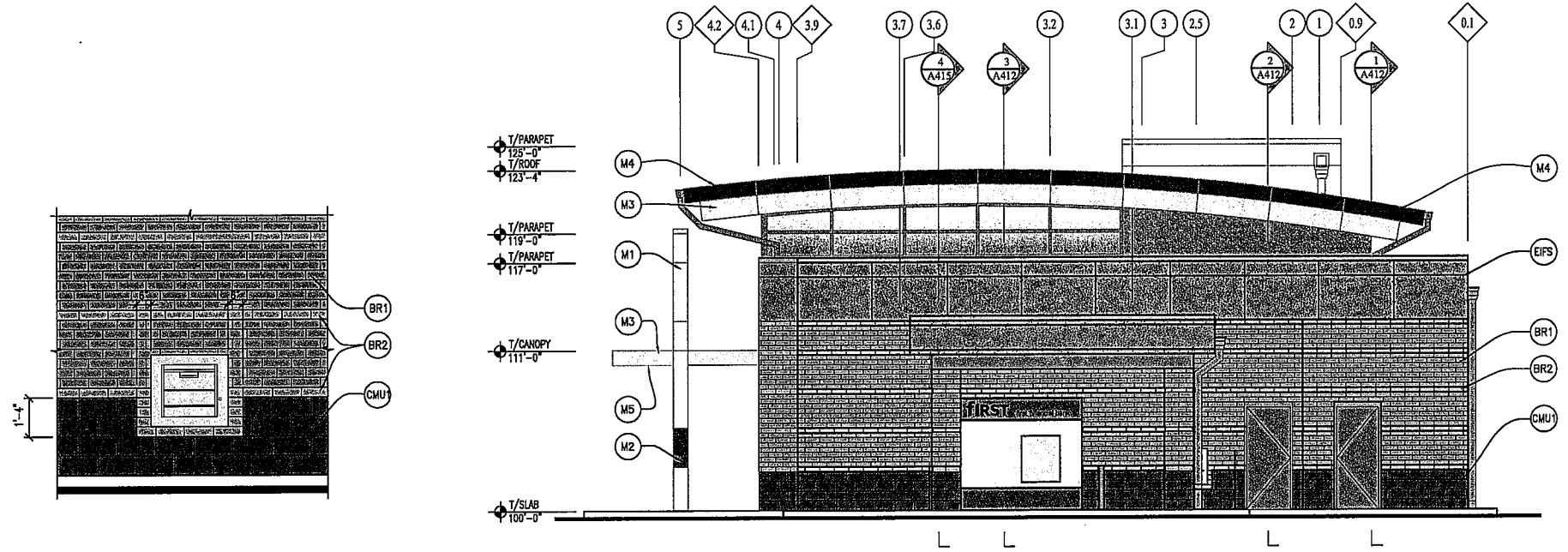


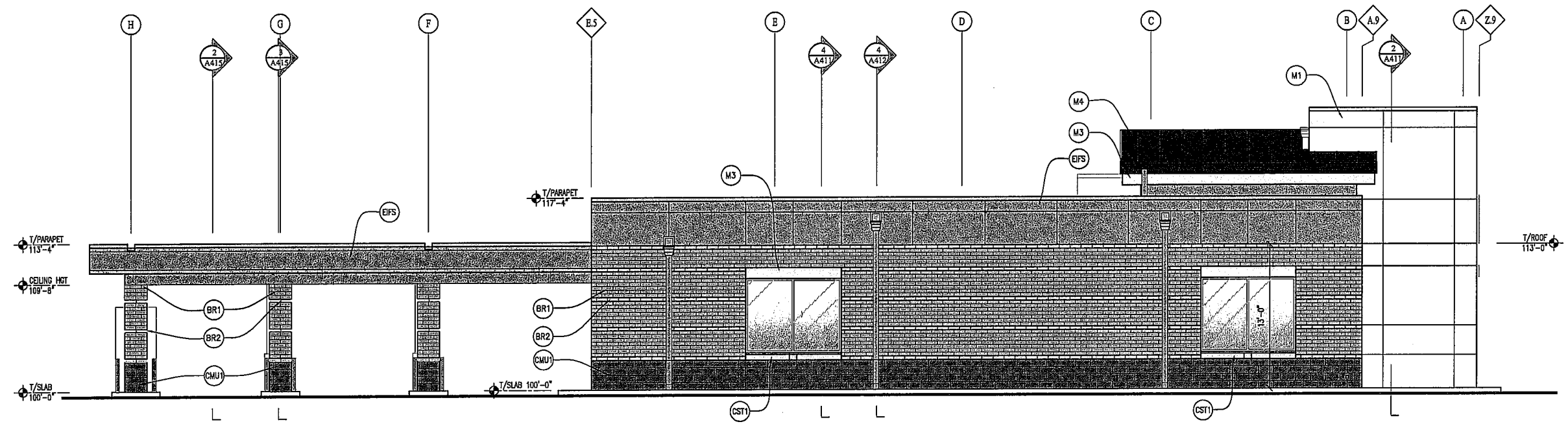
THIS DOCUMENT, AND THE IDEAS AND DESIGN INFORMATION CONTAINED HEREIN, IS THE PROPERTY OF K4 ARCHITECTURE, L.L.C. AND IS NOT TO BE REPRODUCED, COPIED, OR TRANSMITTED IN ANY FORM OR BY ANY MEANS, WITHOUT THE WRITTEN AUTHORIZATION OF K4 ARCHITECTURE, L.L.C. COPYRIGHT 2011 BY K4 ARCHITECTURE, L.L.C. ALL RIGHTS RESERVED.

File Location: S:\2011\10-2015\10-2015 FFB Redstone of Kenwood Site Design\Zoning



3 NIGHT DROP ELEVATION
SCALE: 3/8" = 1'-0"

2 ELEVATION
SCALE: 3/16" = 1'-0"



1 ELEVATION
SCALE: 3/16" = 1'-0"

GENERAL NOTES:

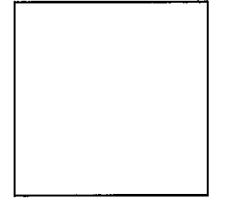
A. GRADES/ELEVATIONS AT DRIVE-THRU ARE REFERENCE ELEVATIONS ONLY - SEE CIVIL DRAWINGS FOR ACTUAL FINISH ELEVATIONS.

FINISH LEGEND:

- M1 CONCEALED FASTENER METAL PANEL - CUSTOM COLOR - FFB CORPORATE YELLOW - "GREENWOOD BEIGE"
- M2 METAL PANEL - CUSTOM COLOR - BLUE PANTONE 285-C (FRONT AND REAR PANEL, THIS LOCATION ONLY) TO BE FACTORY FINISHED OR POST-PAINTED BY CONTRACTOR IN A CONTROLLED ENVIRONMENT
- M3 METAL PANEL - CLEAR ANODIZED
- M4 METAL PANEL - DARK BRONZE
- M5 METAL CEILING PANEL - ANODIZED ALUMINUM, FIRESTONE UNA CLAD UC-600
- BR1 FIELD BRICK - BR-1 - BELDEN BRICK - #661 SMOOTH A 07-47 - SEE SPECIFICATIONS AND EXTERIOR FINISH SCHEDULE A203
- BR2 ACCENT BRICK - BR-2 - BELDEN BRICK - GRAYSTONE VELOUR A 05-09 - SEE SPECIFICATIONS AND EXTERIOR FINISH SCHEDULE A203
- CMU1 CMU WAJNSCOT - CMU1 - BURNISHED BLOCK, GRAND BLANC CEMENT - BOARDMAN. SEE SPECIFICATIONS AND EXTERIOR FINISH SCHEDULE A203
- EIFS EIFS - CUSTOM COLOR TO MATCH FIELD BRICK.
- CST1 CAST STONE 1 WATER TABLE OR WINDOW SILL
- SIGN1 SIGN 1 - ILLUMINATED SIGN - OWNER PROVIDED SIGNAGE <= 128 SF (13'-0" LINEAL FT.) AS SHOWN APPROX. 25 SF
- SIGN2 SIGN 2 - ILLUMINATED SIGN - OWNER PROVIDED SIGN <= 128 SQ.FT. (19'-10" LINEAL FT.) AS SHOWN APPROX. 40 SF

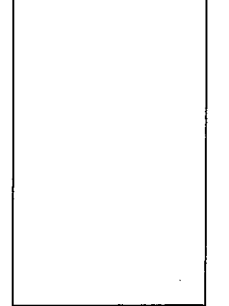
NOTE: INDICATED AREAS ARE CONSISTENT ON ALL ELEVATIONS.

K4 ARCHITECTURE, L.L.C.
555 East Street
Cincinnati, Ohio 45203
Tel: (513) 455-5005
Fax: (513) 455-5008
Webpage: www.k4places.com
Email: info@k4places.com



PROPOSED RETAIL BANKING CENTER
for
first financial bank
Redstone of Kenwood Branch
Montgomery Road
Cincinnati, Ohio

REVISIONS / SUBMISSIONS		
NO.	DESCRIPTION	DATE



EXTERIOR ELEVATIONS
Drawn By: MLK, SDS
Scale: AS NOTED
Job No.: 10-2015

A202