

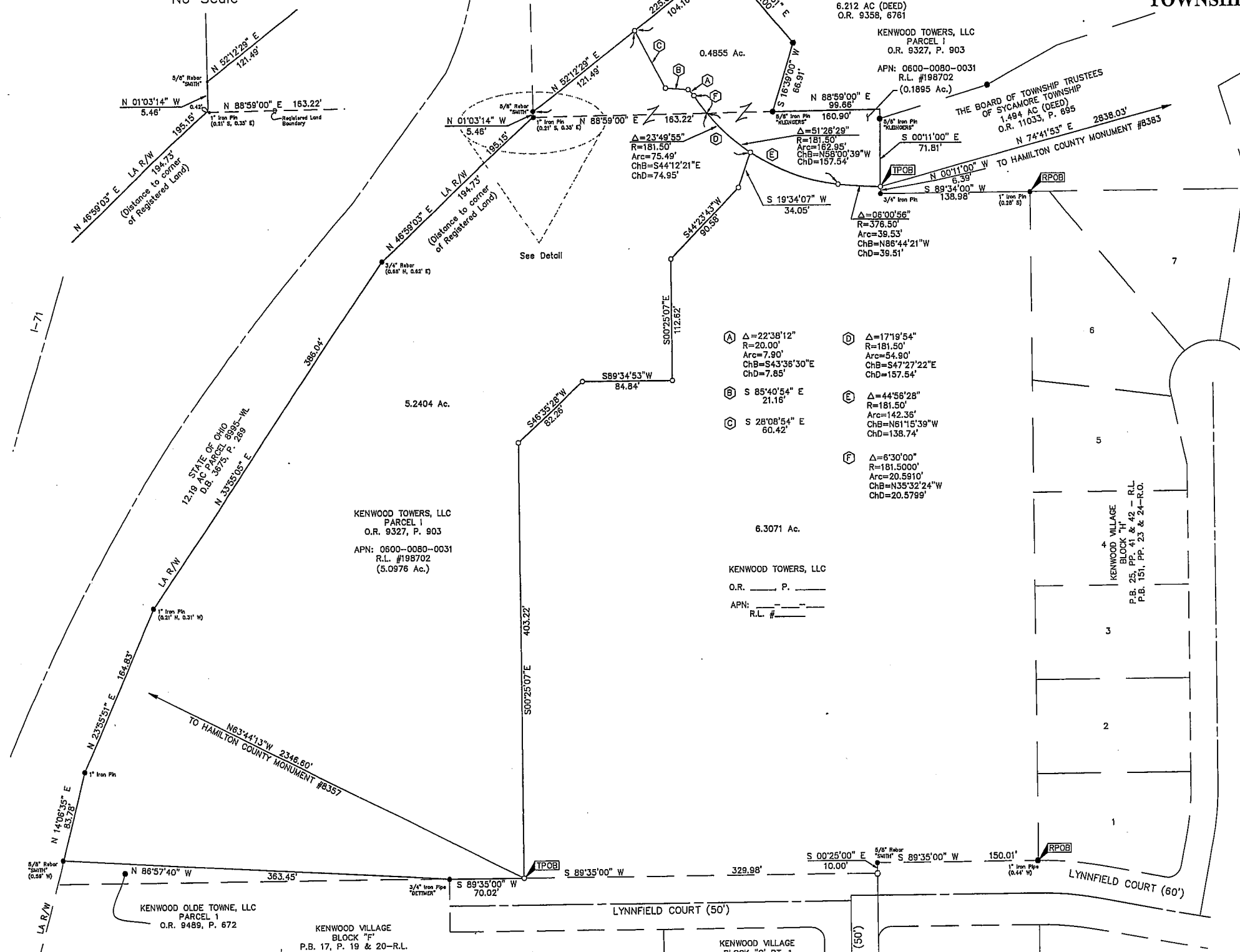
# SURVEY OF ACREAGE PARCELS

SECTION 7, TOWNSHIP 4, ENTIRE RANGE 1  
 SYMMES PURCHASE

TOWNSHIP OF SYCAMORE, COUNTY OF HAMILTON, STATE OF OHIO

## DETAIL

No Scale



NORTH: 5000.0000	EAST: 6000.0000
LINE COURSE: S 89°35'00" W LENGTH: 70.02	
NORTH: 4999.4908	EAST: 5929.9819
LINE COURSE: N 86°57'40" W LENGTH: 363.45	
NORTH: 5018.7587	EAST: 5567.0429
LINE COURSE: N 14°06'35" E LENGTH: 83.78	
NORTH: 5100.0111	EAST: 5587.4668
LINE COURSE: N 23°55'15" E LENGTH: 164.83	
NORTH: 5250.6833	EAST: 5654.3011
LINE COURSE: N 33°55'05" E LENGTH: 388.04	
NORTH: 5571.0333	EAST: 5889.7140
LINE COURSE: N 46°59'03" E LENGTH: 194.7300	
NORTH: 5703.8782	EAST: 6012.0938
LINE COURSE: N 88°59'00" E LENGTH: 163.22	
NORTH: 5708.7743	EAST: 6175.2881
CENTRAL ANGLE: 171°19'54" ARC: 54.90	
CHORD BEARING: S 47°27'23" E CHORD: 54.69	
RADIUS: 181.50 TANGENT: 27.66	
NORTH: 5669.7931	EAST: 6215.5843
LINE COURSE: S 19°34'07" W LENGTH: 34.05	
NORTH: 5637.7098	EAST: 6204.1797
LINE COURSE: S 44°23'43" W LENGTH: 80.58	
NORTH: 5572.9876	EAST: 6140.8079
LINE COURSE: S 0°25'07" E LENGTH: 112.62	
NORTH: 5460.3707	EAST: 6141.6324
LINE COURSE: S 89°34'53" W LENGTH: 84.84	
NORTH: 5459.7508	EAST: 6056.7946
LINE COURSE: S 46°35'28" W LENGTH: 82.26	
NORTH: 5403.2217	EAST: 5997.0354
LINE COURSE: S 0°25'07" E LENGTH: 403.22	
NORTH: 5000.0125	EAST: 5999.9813

Precision Ratio = 1:197111  
 Length Traversed = 2362.7886  
 Length To Close = 0.0243  
 Area = 228274.3128 Sq. Feet or 5.2404 Acres

NORTH: 5000.0000	EAST: 6000.0000
LINE COURSE: S 89°35'00" W LENGTH: 70.02	
NORTH: 4999.4908	EAST: 5929.9819
LINE COURSE: N 86°57'40" W LENGTH: 363.45	
NORTH: 5018.7587	EAST: 5567.0429
LINE COURSE: N 14°06'35" E LENGTH: 83.78	
NORTH: 5100.0111	EAST: 5587.4668
LINE COURSE: N 23°55'15" E LENGTH: 164.83	
NORTH: 5250.6833	EAST: 5654.3011
LINE COURSE: N 33°55'05" E LENGTH: 388.04	
NORTH: 5571.0333	EAST: 5889.7140
LINE COURSE: N 46°59'03" E LENGTH: 194.7300	
NORTH: 5703.8782	EAST: 6012.0938
LINE COURSE: N 88°59'00" E LENGTH: 163.22	
NORTH: 5708.7743	EAST: 6175.2881
CENTRAL ANGLE: 171°19'54" ARC: 54.90	
CHORD BEARING: S 47°27'23" E CHORD: 54.69	
RADIUS: 181.50 TANGENT: 27.66	
NORTH: 5669.7931	EAST: 6215.5843
LINE COURSE: S 19°34'07" W LENGTH: 34.05	
NORTH: 5637.7098	EAST: 6204.1797
LINE COURSE: S 44°23'43" W LENGTH: 80.58	
NORTH: 5572.9876	EAST: 6140.8079
LINE COURSE: S 0°25'07" E LENGTH: 112.62	
NORTH: 5460.3707	EAST: 6141.6324
LINE COURSE: S 89°34'53" W LENGTH: 84.84	
NORTH: 5459.7508	EAST: 6056.7946
LINE COURSE: S 46°35'28" W LENGTH: 82.26	
NORTH: 5403.2217	EAST: 5997.0354
LINE COURSE: S 0°25'07" E LENGTH: 403.22	
NORTH: 5000.0125	EAST: 5999.9813

Precision Ratio = 1:101894  
 Length Traversed = 2288.5652  
 Length To Close = 0.0225  
 Error in Latitude = 0.0125  
 Error in Departure = 0.0187  
 Error in Elevation = 0.0000  
 Area = 222054.4683 Sq. Feet or 5.0976 Acres

NORTH: 5637.8155	EAST: 6336.3879
CENTRAL ANGLE: 6°00'56" ARC: 39.53	
CHORD BEARING: N 86°44'21" W CHORD: 39.51	
RADIUS: 376.50 TANGENT: 19.78	
NORTH: 5640.0628	EAST: 6296.9419
LINE COURSE: N 51°26'29" E LENGTH: 162.95	
CHORD BEARING: N 58°00'39" W CHORD: 157.54	
RADIUS: 181.50 TANGENT: 87.43	
NORTH: 5723.5211	EAST: 6163.3246
CENTRAL ANGLE: 22°38'12" ARC: 7.90	
CHORD BEARING: N 43°36'30" W CHORD: 7.85	
RADIUS: 20.00 TANGENT: 4.00	
NORTH: 729.2050	EAST: 6157.9102
LINE COURSE: N 85°40'54" W LENGTH: 21.16	
NORTH: 5730.7983	EAST: 6136.8103
LINE COURSE: N 28°08'54" W LENGTH: 80.42	
NORTH: 5784.0724	EAST: 6108.3066
LINE COURSE: N 52°12'29" E LENGTH: 104.16	
NORTH: 5847.9012	EAST: 6190.6183
LINE COURSE: S 40°35'31" E LENGTH: 100.00	
NORTH: 5771.9649	EAST: 6255.6851
LINE COURSE: S 16°39'00" W LENGTH: 66.91	
NORTH: 5707.8603	EAST: 6236.5137
LINE COURSE: N 88°59'00" E LENGTH: 99.66	
NORTH: 5709.6286	EAST: 6336.1580
LINE COURSE: S 0°11'00" E LENGTH: 71.81	
5637.81906336.3878	

Precision Ratio = 1:209785  
 Length Traversed = 734.5115  
 Length To Close = 0.0035  
 Error in Latitude = 0.0035  
 Error in Departure = 0.0001  
 Error in Elevation = 0.0000  
 Area = 21148.7482 Sq. Feet or 0.4855 Acres

NORTH: 5637.8155	EAST: 6336.3879
CENTRAL ANGLE: 6°00'56" ARC: 39.53	
CHORD BEARING: N 86°44'21" W CHORD: 39.51	
RADIUS: 376.50 TANGENT: 19.78	
NORTH: 5640.0628	EAST: 6296.9419
CENTRAL ANGLE: 44°56'28" ARC: 142.36	
CHORD BEARING: N 61°15'39" W CHORD: 138.7427	
RADIUS: 181.5013 TANGENT: 75.0711	
NORTH: 5706.7712	EAST: 6175.2885
LINE COURSE: N 88°59'00" E LENGTH: 160.90	
NORTH: 5709.6281	EAST: 6336.1631
LINE COURSE: S 0°11'00" E LENGTH: 71.81	
NORTH: 5637.8154	EAST: 6336.3929

Precision Ratio = 1:80840  
 Length Traversed = 414.6076  
 Length To Close = 0.0051  
 Error in Latitude = 0.0010  
 Error in Departure = 0.0050  
 Error in Elevation = 0.0000  
 Area = 8254.0218 Sq. Feet or 0.1895 Acres

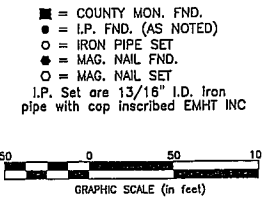


By *Heather L. King* 4/20/10  
 Heather L. King  
 Professional Surveyor No. 8307

EMHT		Date: April 13, 2010
Evans, Mechwart, Hombelton & Tilton, Inc. Engineers • Surveyors • Planners • Scientists 5600 New Albany Road, Columbus, OH 43254 Phone: 614.775.5500 Fax: 614.775.5544 emht.com		Scale: 1" = 50'
		Job No: 2008-2280
		Sheet: 1 of 1
REVISIONS		
MARK	DATE	DESCRIPTION
HLK	4/19/10	Added 'remainder curve' date

**SURVEY NOTE:**  
 This survey was prepared using documents of record, prior plats of survey, and observed evidence located by an actual field survey.

**BASIS OF BEARINGS:**  
 The Bearings shown hereon are based on westerly line of Kenwood Village Block "H", a subdivision of record in Plat Book 25, Pages 41 & 42, of the Registered Land Records of Hamilton County Ohio and in Plat Book 151, Pages 23 and 24 of the Hamilton County, Ohio Recorder's Office, having a bearing of North 0° 25' West.



- = COUNTY MON. FND.
- = I.P. FND. (AS NOTED)
- = IRON PIPE SET
- = MAG. NAIL FND.
- = MAG. NAIL SET
- I.P. Set are 1 3/16" I.D. Iron pipe with cop inscribed EMHT INC

4/20/2010 10:22:31 AM last saved by HMM on 4/20/2010 10:22:12 AM  
 4/20/2010 10:22:31 AM last saved by HMM on 4/20/2010 10:22:12 AM