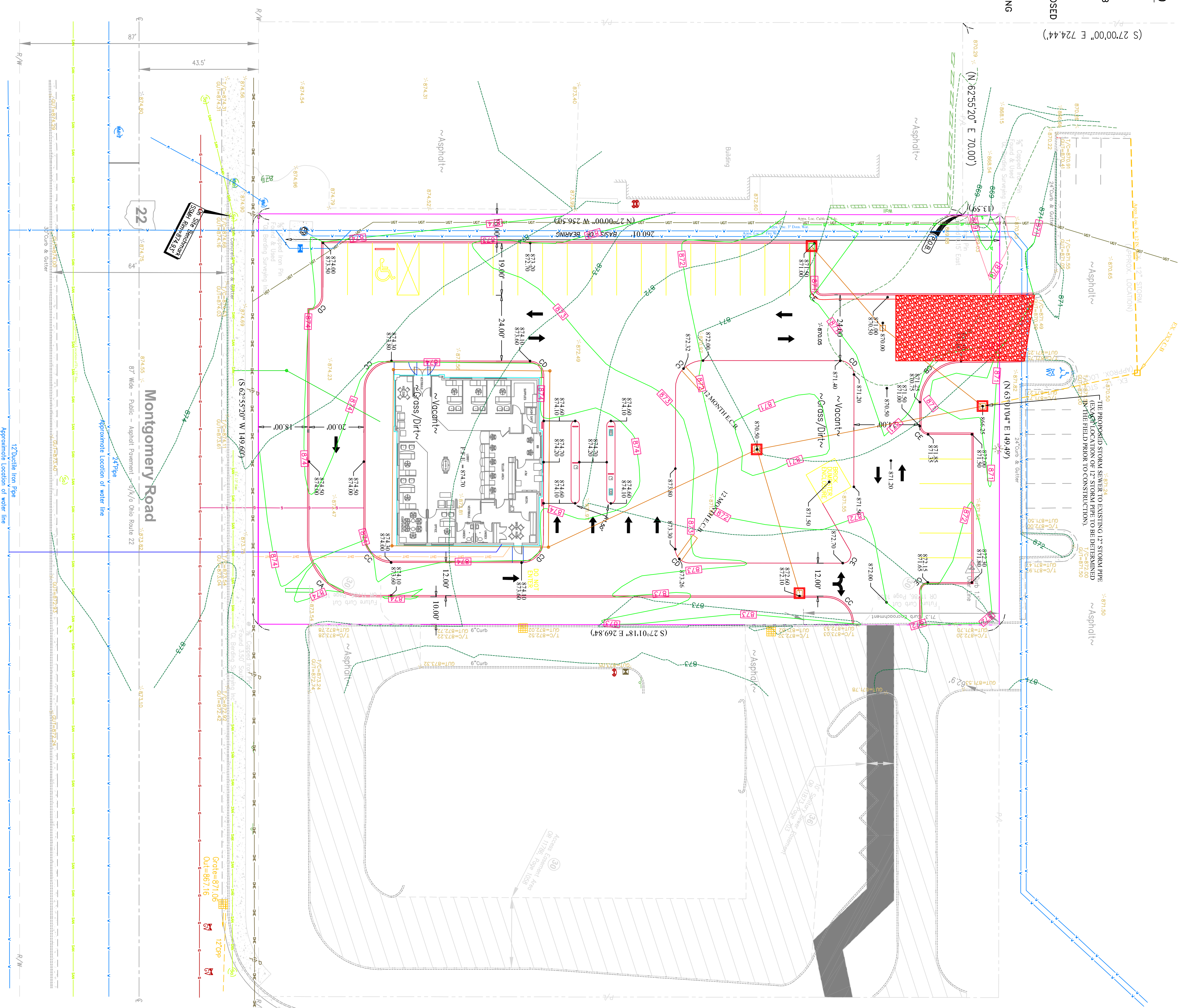
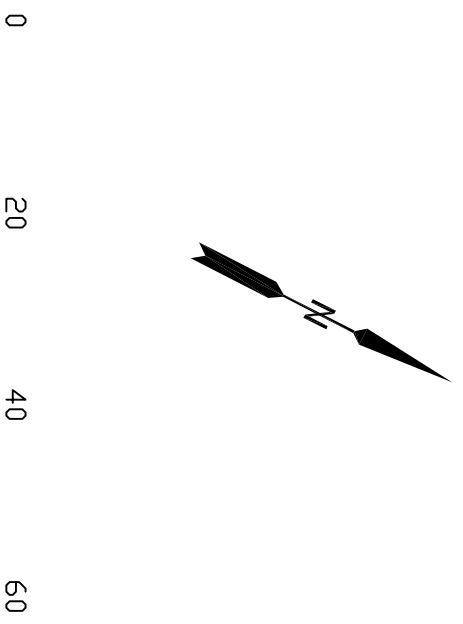


GRADING AND EROSION CONTROL LEGEND

- XXX.XX SPOT ELEVATION-FINISH GRADE
- XXX.XX SPOT ELEVATION-TOP OF CURB
- XXX.XX SPOT ELEVATION-FINISH GRADE/BOTTOM OF CURB
- 7.19 INDEX CONTOURS-PROPOSED
- 7.19 INTERMEDIATE CONTOURS-PROPOSED
- 7.45 INDEX CONTOURS-EXISTING
- 7.45 INTERMEDIATE CONTOURS-EXISTING
- SF TEMPORARY SILT FENCE
- Clearing Limits
- Drainage Ditch
- Inlet Protection
- Rock Construction Entrance



GRADING PLAN GENERAL NOTES

- 1) REFER TO AND FOLLOW THE RECOMMENDATIONS OF GEOTECHNICAL SUBSURFACE EVALUATION AND FOUNDATION EVALUATION REPORT IF AVAILABLE.
- 2) SEE SITE PLAN SHEET FOR INFORMATION ON CATCH BASINS.
- 3) CONSTRUCT ROCK CONSTRUCTION ENTRANCE WHERE SHOWN ON THIS PLAN PRIOR TO LAND DISTURBANCE ACTIVITIES. INSTALL 8-INCHES OF NO. 2 + 2-INCHES OF DENSE GRADED AGGREGATE COVER FILTER FABRIC AT OR NEAR THE EXISTING CURB CUT. CONTRACTOR IS RESPONSIBLE FOR KEEPING ROADS FREE OF WIND AND DEBRIS.
- 4) CONTRACTOR TO INSTALL PERIMETER EROSION CONTROL MEASURES PRIOR TO ANY LAND DISTURBANCE.
- 5) CONTRACTOR TO CONTACT THE UNITED UTILITIES PROTECTION SERVICE BEFORE ANY EXCAVATION OPERATIONS COMMENCE.
- 6) CONTRACTOR SHALL NOT EXPORT SUITABLE MATERIAL VOLUMES UNLESS THEY ARE CERTAIN THAT FINAL GRADES ARE MET.
- 7) THE EARTHWORK FOR THIS BID PACKAGE SHALL INCLUDE CLEARING AND GRUBBING, STRIPPING OF TOPSOIL (IF ANY) FROM THE PROJECT DISTURB LIMITS, AND FILL AREAS. PLACING MATERIAL IN THE STOOPAGE, IMPORT OF SUITABLE MATERIALS (IF NECESSARY), UNDERCUT EXCAVATION (IF NEEDED), SUBGRADE PREPARATION FOR THE BUILDING PAD AND PAYMENT SUBGRADES, INCLUDING SIDEWALKS, MAINTAINING SUITABLE SUBGRADE, AND REDISTRIBUTION OF TOPSOIL TO LANDSCAPE AREAS.
- 8) UNDERCUT EXCAVATION OF UNSUITABLE MATERIAL, WHERE DETERMINED UNSATISFACTORY BY THE ON-SITE GEOTECHNICAL ENGINEER, SHALL BE UNDERCUT AND HAULED AWAY FROM THE PROJECT SITE. WASTING ON-SITE OF UNSUITABLE SOILS OR MATERIALS IS NOT PERMITTED. UNDERCUT TO INCLUDE PLACING SUITABLE MATERIALS IF AVAILABLE ON-SITE, OR IMPORTING SUITABLE MATERIALS IF NECESSARY.
- 9) PRIOR TO ANY EARTHWORK, FILLING OPERATIONS, STRIP TOPSOIL (IF ANY) AND PLACE IN THE TOPSOIL STOCKPILE AREA. CONSTRUCT TEMPORARY EROSION CONTROL MEASURES TO PREVENT SOIL EROSION AND SEDIMENTATION FROM DAMAGING ADJOINING AREAS.
- 10) PROVISIONS SHOULD BE MADE FOR ADEQUATE DRAINAGE OF THE SITE DURING AND FOLLOWING CONSTRUCTION ACTIVITIES. SURFACE WATER SHOULD NOT BE ALLOWED TO POND ANYWHERE ON THE BUILDING PAD OR PAVEMENT SUBGRADE.
- 11) CONTRACTOR SHALL NOTIFY PROJECT GEOTECHNICAL CONSULTANT TO BE PRESENT DURING PLACEMENT OF SUITABLE FILL MATERIAL AND COMPACTION OPERATIONS. SLOPES SHALL BE CONSTRUCTED TO NOT EXCEED 3 : 1 IN ANY LOCATION.
- 12) CONTRACTOR SHALL NOT DISBURB ADJACENT PROPERTIES AND SHALL PROTECT ADJACENT STRUCTURES AND PROPERTY FROM DAMAGE DURING GRADING AND CONSTRUCTION ACTIVITIES.
- 13) AFTER THE EARTHWORK PHASE IS COMPLETED, REDISTRIBUTE AVAILABLE TOPSOIL TO THE PERIMETER SLOPES TO A MINIMUM DEPTH OF 4-INCHES, AND ESTABLISH GRASS COVER AS SOON AS PRACTICAL.
- 14) UPON COMPLETION OF THE CONSTRUCTION OF THE CURBS, SIDEWALKS AND PAVEMENTS, THE CONTRACTOR SHALL REDISTRIBUTE TOPSOIL IN LANDSCAPE AREAS TO A MINIMUM DEPTH OF 12-INCHES. IN ADDITION, THE LANDSCAPE ISLANDS (WHETHER GRASS OR MULCH) SHALL BE MOUND TO 12-INCHES MINIMUM HEIGHT.
- 15) IF EXCESS TOPSOIL EXISTS, CONTRACTOR SHALL DISTRIBUTE TOPSOIL ON-SITE TO A MAXIMUM DEPTH OF 6-INCHES. IF EXCESS TOPSOIL REMAINS, CONTACT PROJECT ARCHITECT TO DETERMINE WHERE SOME LANDSCAPING WOUNDS MAY BE ADDED. THE CONTRACTOR SHALL REMOVE EXCESS TOPSOIL, AND EXCESS TOPSOIL SHALL BE REDISTRIBUTED TO THE PROJECT SITE. THESE RECOMMENDATIONS AND WHEN THEY IS CERTAIN THAT FINAL GRADES HAVE BEEN MET.
- 16) EXPOSED AND DISTURBED AREAS SHALL BE SEEDED AND MULCHED AS SOON AS PRACTICAL UPON COMPLETION OF FINAL GRADING ACTIVITIES.
- 17) CONTRACTOR SHALL MAINTAIN SEEDING AND MULCHING AREAS UNTIL GROUND COVER IS ESTABLISHED.
- 18) ALL PROPOSED GRADES SHOWN ON THESE PLANS ARE TOP OF GROUND LEVEL OR TOP OF PAVEMENT WITH TOP OF 6-INCH CURB. GRADES ON STORM STRUCTURES ARE ON TOP OF GRADE AT THE DRAWMOOD POINT.
- 19) DO NOT EXCEED THE MAXIMUM OF 2.00% GRADE WITHIN THE HANDICAP PARKING AREA (EXCEPT FOR HANDICAP RAMPS) TO COMPLY WITH ADA REQUIREMENTS AND LOCAL BUILDING CODES.
- 20) THE EARTHWORK ON THIS PROJECT MAY OR MAY NOT "BALANCE". DURING DESIGN, SOME ATTEMPT WAS MADE TO MINIMIZE EARTHWORK REQUIRED, BUT NOT ATTEMPT TO ACHIEVE BALANCE. THE CONTRACTOR IS RESPONSIBLE FOR ANY IMPORT (IF NECESSARY) OF SUITABLE MATERIALS THAT MAY BE REQUIRED TO COMPLETE THE FILL AND FINAL GRADING.
- 21) IF EXPORT OF MATERIALS IS EXPECTED, INCLUDING UNSUITABLE OR SPOILS, CONTRACTOR SHALL CONTACT THE DEVELOPER TO DETERMINE IF SURROUNDING AREAS CAN BE USED FOR WASTED MATERIAL. THE CONTRACTOR IS RESPONSIBLE FOR REMOVING AND HAULING AWAY ALL EXCESS AND UNSUITABLE MATERIALS FROM THIS SITE.

EROSION CONTROL AND PROTECTION:

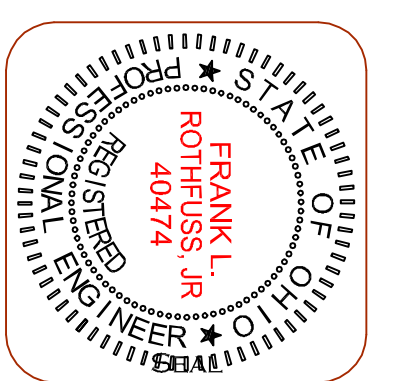
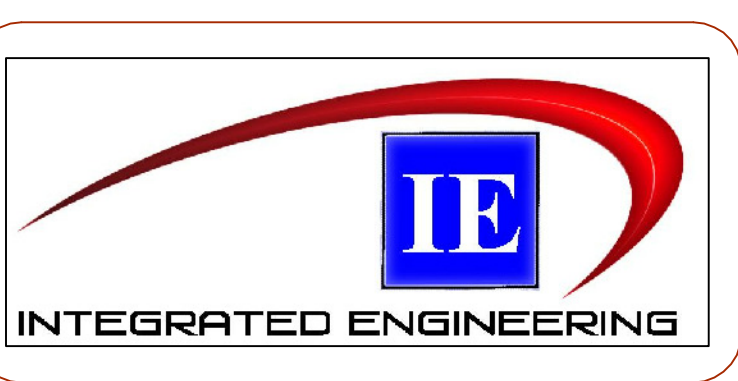
- 1) EROSION CONTROL DEVICES TO BE INSTALLED PRIOR TO ANY OTHER WORK BEING DONE.
- 2) SILT FENCE - INSTALL FILTER FABRIC (STAKED 10'-FT. O.C.) PARALLEL TO THE CONTROL LINES ON DOWNSLOPES WHERE SHOWN. ENTRENCH (ANGHOR) FILTER FABRIC PER MANUFACTURER'S RECOMMENDATIONS. STABLE FILTER FABRIC ON UPSLOPE SIDE. SEE DETAIL SHEET.
- 3) INLET PROTECTION (I.P.) - AT EACH PROPOSED CATCH BASIN AND AT EXISTING CATCH BASIN, CONSTRUCT INLET PROTECTION AS SHOWN ON THIS SHEET FOR RECOMMENDATIONS.
- 4) WHETHER SHOWN ON THIS PLAN OR NOT, CONTRACTOR SHALL INSTALL AND MAINTAIN OTHER DEVICES DEEMED NECESSARY FOR EROSION CONTROL.
- 5) CONTRACTOR SHALL INSPECT EROSION AND SEDIMENT CONTROL BMP'S (BEST MANAGEMENT PRACTICES) AT MINIMUM ONCE EVERY 7 DAYS AND WITHIN 24 HOURS OF A 0.5-INCH OR GREATER RAIN EVENT.
- 6) SITE STABILIZATION SHALL BEGIN WITHIN 14 DAYS ON AREAS OF THE SITE WHERE CONSTRUCTION ACTIVITIES ARE COMPLETED OR SUSPENDED FOR MORE THAN 21 DAYS.

DESCRIPTION OF REVISION

NO.	DESCRIPTION OF REVISION

PROJECT NO.: 120025
 DATE: APRIL 2012
 DRAWN BY: CAV
 CHECKED BY: FLR

PROJECT
US BANK
 7739 MONTGOMERY RD.
 SYCAMORE TOWNSHIP, OH
 OWNER
US BANK
 470 N KIRKWOOD RD., KIRKWOOD, MO 63122
 P (314) 835-2312



GRADING AND EROSION CONTROL PLAN

SHEET NO. C-300