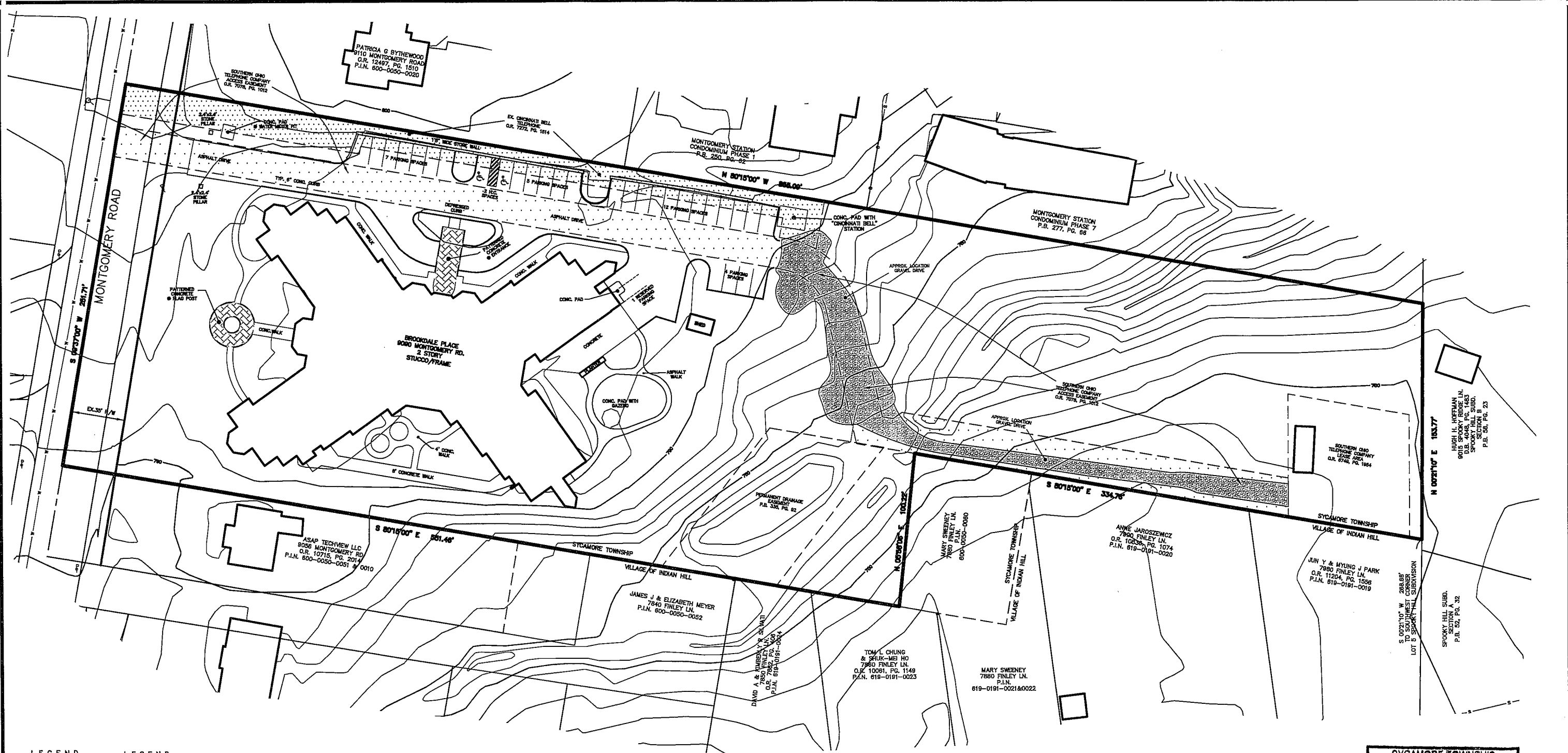


N:\land projects\BP14\1411801\1411801-TOP-00.dwg, 2/5/2015 9:27:38 AM, mel, 1:2.1503

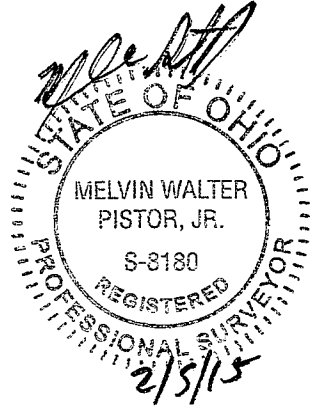


- LEGEND**  
EXISTING FEATURES
- MANHOLE
  - ⊞ CATCH BASIN/DRAIN
  - ⊞ GUTTER INLET
  - CLEAN OUT
  - ⊞ DOWNSPOUT
  - ⊞ UTILITY POLE
  - ⊞ ELECTRIC BOX
  - ⊞ TELEPHONE BOX
  - ⊞ CABLE TV BOX
  - ⊞ LIGHT POLE/LAMP POST
  - ⊞ TRAFFIC SIGNAL/BOX
  - ⊞ FIRE HYDRANT
  - ⊞ WATER VALVE/METER
  - ⊞ SPRINKLER/VALVE
  - ⊞ GAS VALVE/METER
  - ⊞ SIGN/SIGN POST
  - ⊞ FLAG POLE
  - ⊞ MAIL BOX
  - ⊞ PARKING METER
  - ⊞ GUARD POST
  - ⊞ HANDICAPPED PARKING
  - SANITARY SEWER
  - STORM SEWER
  - WATER LINE
  - GAS LINE
  - ELECTRIC LINE
  - TELEPHONE LINE
  - OVERHEAD UTILITY LINE
  - FENCE LINE

- LEGEND**  
MONUMENTS  
(UNLESS NOTED OTHERWISE)
- EX. 5/8" IRON PIN
  - ⊞ EX. SPIKE
  - ⊞ EX. NOTCH
  - ★ EX. NAIL
  - △ EX. STONE
  - EX. CONC. MON.
  - EX. FENCE LINE
  - 5/8" IRON PIN SET
  - ⊙ 1" IRON PIN SET
  - ⊞ SPIKE SET
  - ⊞ NOTCH SET
  - ★ NAIL SET
  - CONC. MON. SET

**NOTES**

OCCUPATION IN GENERAL FITS SURVEY EXCEPT AS SHOWN.  
MONUMENTS GENERALLY IN GOOD CONDITION UNLESS NOTED OTHERWISE.  
SURVEY BASED ON FIELD EVIDENCE AND DEEDS & PLATS OF RECORD NOTED HEREON.  
EASEMENTS SHOWN HEREON WERE DISCOVERED DURING THE COURSE OF RESEARCH OF PUBLIC RECORDS AND MAY NOT COMPRISE ALL OF THE EASEMENTS AND/OR ENCUMBRANCES AFFECTING THE SUBJECT PROPERTY.  
BEARINGS BASED ON O.R. 7078, PG. 1001 HAMILTON COUNTY, OHIO RECORDER'S OFFICE.



SYCAMORE TOWNSHIP  
PLANNING & ZONING  
FEB 11 2015  
RECEIVED

**BROOKDALE PLACE AT KENWOOD**  
9090 MONTGOMERY ROAD  
PARCEL No. 600-0050-0046  
4.2798 ACRES  
SECTION 3, TOWN 4, RANGE 1  
SYCAMORE TOWNSHIP, HAMILTON COUNTY, OHIO

Revision	By	Date

**mSP** McGill Smith Punshon, Inc.  
3700 Park 42 Drive • Suite 190B  
Cincinnati, Ohio 45241-2097  
Tel 513.759.0004 • Fax 513.563.7099  
www.mcgillsmithpunshon.com  
Engineers • Architects • Surveyors • Landscape Architects • Planners

Drawn By: MWP Date: 5-16-14 Project No.: 1411801 Sheet No.: 1/1  
Project Mgr.: MWP Scale: 1"=30' Points D.B.: 1411801 TBC  
CAD: 8P14\1411801-TOP-00 X-Ref. N/A File No.: 1411801