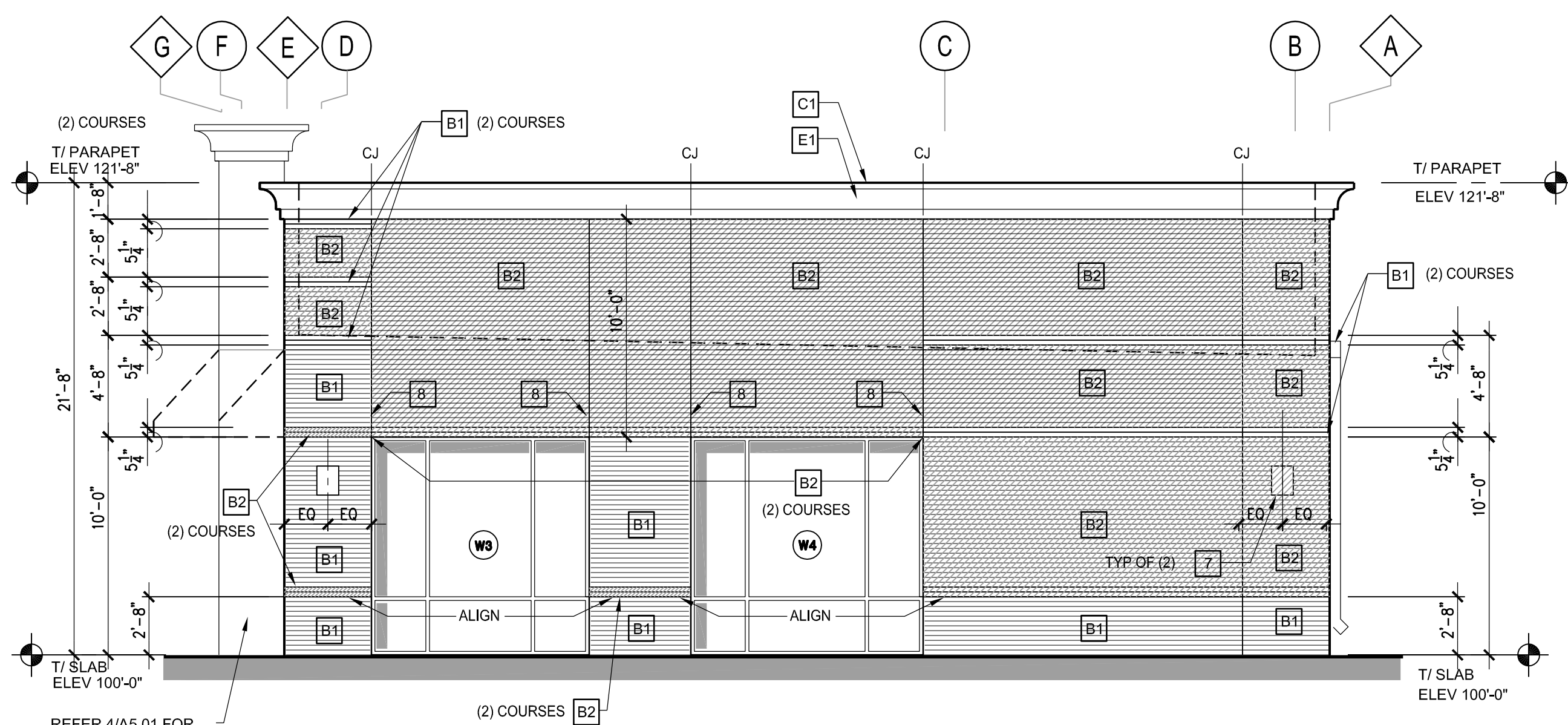
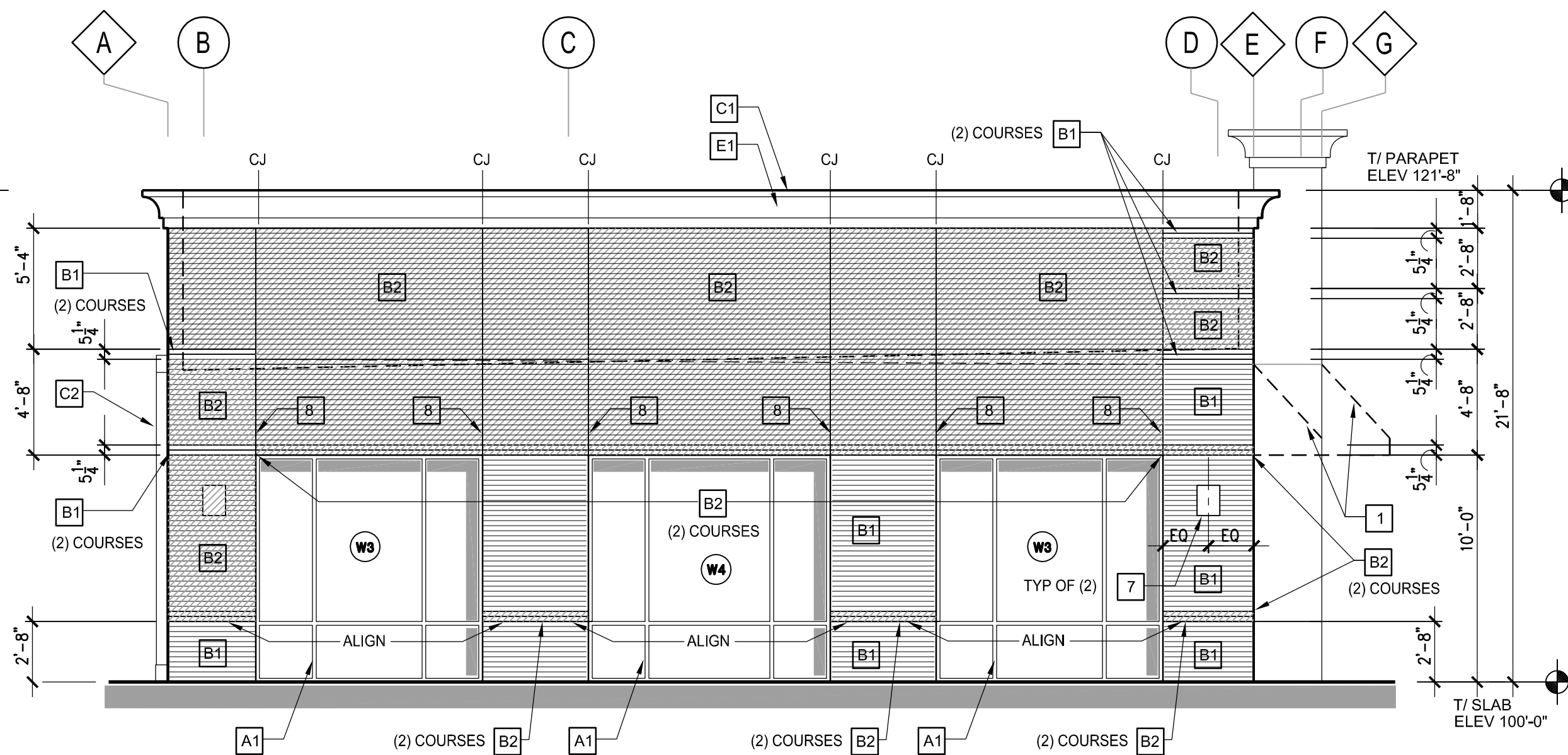


4 PARTIAL ELEVATION
SCALE: 3/16"=1'-0"

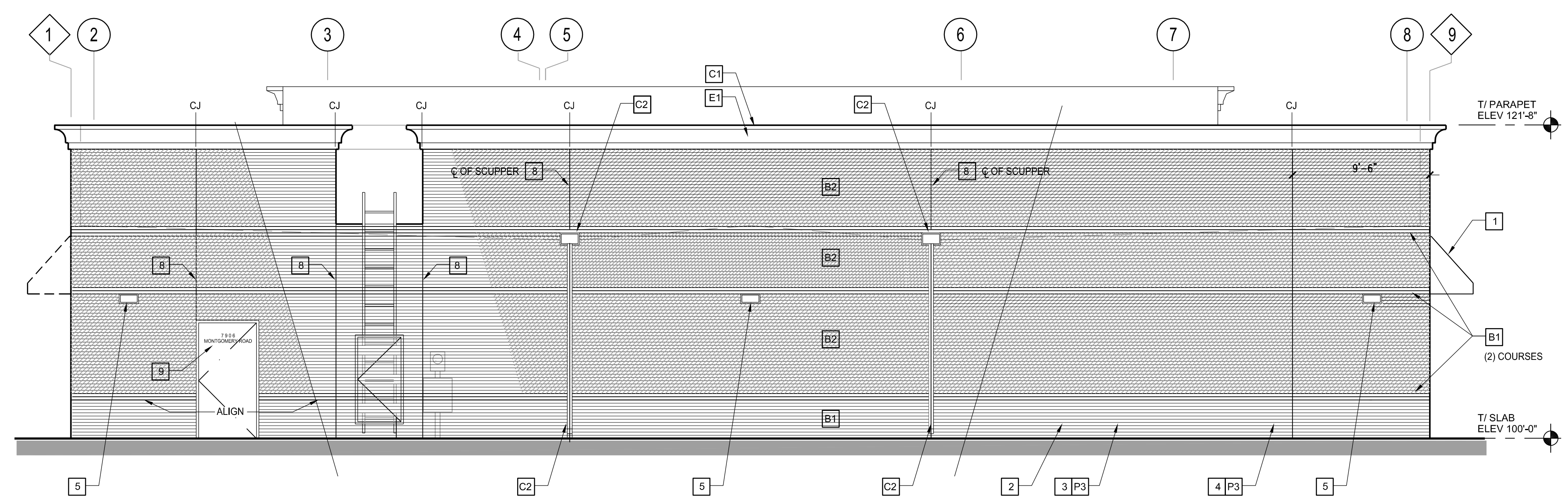
4 NORTH ELEVATION
SCALE: 3/16"=1'-0"



4 NORTH ELEVATION
SCALE: 3/16"=1'-0"



4 NORTH ELEVATION
SCALE: 3/16"=1'-0"



4 NORTH ELEVATION
SCALE: 3/16"=1'-0"

Project General Notes

- A. REFER TO COVER SHEET FOR TYPICAL PROJECT GENERAL NOTES

General Elevation Sheet Notes

- SEE ROOF PLAN FOR ADDITIONAL ROOFING GUTTER AND DOWNSPOUT NOTES.
- ALL WORK TO COMPLY WITH OBC CURRENT CODES, OR WITH LOCAL AUTHORITY HAVING JURISDICTION.
- MANUFACTURER'S INSTALLATION REQUIREMENTS - ALL MATERIALS SHALL BE INSTALLED IN FULL COMPLIANCE WITH MANUFACTURER'S REQUIREMENTS TO MAINTAIN ALL WARRANTIES. THIS INCLUDES ALL MFG REQUIREMENTS FOR WEATHER AND TEMPERATURE CONDITIONS. REPORT ALL CONFLICTS IMMEDIATELY, AND PRIOR TO COMMENCEMENT OF CONSTRUCTION, TO OWNER'S REPRESENTATIVE. ANY COSTS FOR REMEDIAL WORK AND MATERIAL COSTS DUE TO FAILURE TO REPORT CONFLICT, SHALL BE THE CONTRACTOR'S RESPONSIBILITY.
- SITE - SLOPE GRADES AND PAVING AWAY FROM BUILDING. COORDINATE FINAL GRADE ELEVATIONS WITH CIVIL ENGINEER. REPORT AND DISCREPANCIES OR VARIATION FROM THIS DRAWING TO OWNER PRIOR TO COMMENCEMENT OF WORK.
- CONTROL JOINTS, MASONRY - PROVIDE BRICK AND MASONRY CONTROL JOINTS IN COMPLIANCE WITH BRICK INSTITUTE OR MANUFACTURER'S STRICT RECOMMENDATIONS. SILICON SEALANT TO MATCH MASONRY COLOR.
- PROVIDE SHOP DRAWING OF EACH ELEVATION, INDICATING PROPOSED CONTROL AND EXPANSION JOINT LOCATIONS (ALL MATERIALS) FOR OWNER AND ARCHITECT'S APPROVAL PRIOR TO CONSTRUCTION
- BOND BREAKS - MASONRY - COMPLY WITH MFG RECOMMENDATIONS FOR BOND BREAK AND/OR CONTROL JOINTS AT JOINTS BETWEEN DISSIMILAR MASONRY PRODUCTS. ENSURE THAT ALL MASONRY VENEER PRODUCTS ARE SECURED WITH PROPER TIES / ANCHORS.
- CONTROL JOINTS, EIFS - COMPLY WITH MANUFACTURER'S REQUIREMENTS FOR THERMAL MOVEMENT. NOTIFY OWNER IF ADDITIONAL CONTROL JOINTS ARE REQUIRED PRIOR TO COMMENCEMENT OF WORK.
- CANOPIES, AWNINGS, SUNSHADES, BUILDING SIGNAGE :
 - ANCHORAGE: DO NOT ANCHOR TO MASONRY OR ANY OTHER VENEER OR EIFS. PROVIDE PLYWOOD BLOCKING AT ALL SIGN BANDS. ANCHOR TO BLOCKING/REINFORCING WHICH IS ANCHORED TO STRUCTURE OR LGMP. SLEEVE ALL ANCHORS THRU VENEER AND EIFS, CONFIRM WITH STRUCTURAL ENGINEER
 - ALIGNMENT: LOCATE AWNINGS TYPICALLY AT HEAD OF WINDOWS. DO NOT ATTACH TO WINDOW SYSTEM, MAINTAIN ALL AWNINGS IN ALIGNMENT ACROSS BLDG FACE.
 - PERMIT: CONTRACTORS FOR SIGNAGE, AWNINGS AND PRE-FABRICATED CANOPIES / SUNSHADES ARE RESPONSIBLE FOR ZONING COMPLIANCE. PERMIT APPLICATION AND SUBMITTAL. PERMIT REQUIRES SHOP DRAWINGS INDICATING FRAME CONSTRUCTION AND ANCHORAGE. INCLUDE CODE COMPLIANCE FOR FABRIC COVERINGS.
- SIGNAGE, MONUMENT - COORDINATE WITH CIVIL, STRUCTURAL AND MEP ENGINEERS FOR SIGNAGE LOCATION, FOUNDATION AND POWER. CONTRACTOR RESPONSIBLE FOR ZONING COMPLIANCE. PERMIT APPLICATION AND SUBMITTAL. PERMIT REQUIRES SHOP DRAWINGS INDICATING CONSTRUCTION AND ANCHORAGE. OWNER TO APPROVE ALL DESIGNS PRIOR TO FABRICATION.
- COPINGS, FLASHINGS, FASCIAS, TRIM - COMPLY WITH NRCA RECOMMENDATIONS FOR GAUGE, ATTACHMENT, CLEATS, PROFILES. PROVIDE WATER-TIGHT CONTROL JOINTS TO ACCOMMODATE THERMAL MOVEMENT. COPING, FLASHING COLOR TYPICALLY TO MATCH ADJACENT WALL MATERIAL.
- SCUPPERS, OVERFLOWS, DOWNSPOUT NOZZLE: PROVIDE WATER-TIGHT DETAILING IN COMPLIANCE WITH ROOFING MANUFACTURER'S STANDARDS AND SMACNA STANDARDS. MAINTAIN ALL MATERIAL AND SYSTEM WARRANTIES. PENETRATIONS AT DOWNSPOUT NOZZLES TO BE SEALED WATER-TIGHT. PROVIDE COVER-INSET SCREEN, FLASHING COLOR TYPICALLY TO MATCH ADJACENT WALL MATERIAL.
- GUTTERS, DOWNSPOUTS - SIZE PER OBC AND SMACNA REQUIREMENTS FOR THE ROOF AREA SERVED. PROVIDE GUTTER BARRETS AND STRAPS. PROVIDE DOWNSPOUT HANGERS AT 10 FT OC MAX. SFT OC AT HORIZ. RUNS. PROVIDE WATER-TIGHT CONTROL JOINTS TO ACCOMMODATE THERMAL MOVEMENT, COLOR TYPICALLY TO MATCH ADJACENT WALL MATERIAL.
- DUMPSTER, COMPACTOR ENCLOSURES - PROVIDE PAINTED STEEL BOLLARDS. SET IN CONCRETE FOOTING (MIN 24" DIA. FROST DEPTH) SEE STRUCT ALSO. COORDINATE GATEPOST FOOTINGS WITH STRUCTURAL ENCLOSURE WALL FOOTINGS. SCREENING, GATES AND LIGHTING TO COMPLY WITH LOCAL ZONING REQUIREMENTS.
- UTILITIES - COORDINATE LOCATIONS FOR BUILDING UTILITIES, METERS, TRANSFORMERS, PD CONNECTIONS, ETC. TO AVOID CONFLICTS WITH WINDOWS, ENTRIES, BLDG AND EGRESS CIRCULATION.
- REQUIRED ENGINEERING - FOR PREFABRICATED SYSTEMS, CONTRACTORS ARE REQUIRED TO PROVIDE ENGINEERING DOCUMENTATION FOR SYSTEMS WHICH THEY PROVIDE WHICH ARE NOT ENGINEERED ON THE STRUCTURAL DRAWINGS/SPECS. THIS SHALL INCLUDE LIGHT GAUGE METAL FRAMING, STAIRS, ROOFING SYSTEMS, INTERIOR AND EXTERIOR METAL STUDS, BULKHEADS, SUSPENDED CEILING FRAMING AND HANGERS, EXTERIOR METAL WALL AND ROOF PANELS, SHEET METAL FLASHINGS, COPINGS, WINDOWS, CURTAINWALL, FENCING. INCLUDE DOCUMENTATION FOR: GAUGE, SIZE, ANCHORS, CONNECTIONS, SLIDES, LIMITING HEIGHTS AND BRACING. DOCUMENTATION PROVIDED BY A PROFESSIONAL ENGINEER REGISTERED IN THE STATE OF OHIO. COMPLY WITH ALL CURRENT APPLICABLE CODES/ORDINANCES FOR ALL MATERIALS, PRODUCTS, SYSTEMS, AND INSTALLATIONS.

Construction / Plan Notes

- 1 DASH LINE DENOTES PREFAB AWNING ASSEMBLY BY TENANT
- 2 UTILITY METER- REFER TO MEP DWGS
- 3 ROOF ACCESS LADDER
- 4 DOOR & FRAME. REFER TO DOOR SCHEDULE
- 5 SECURITY LIGHTS - REFER TO ELECT DWGS
- 6 SIGNAGE UNDER SEPARATE PERMIT BY TENANT - REFER TO ELECT DWGS
- 7 EXTERIOR SCENCE LIGHT - REFER TO ELECT DWGS
- 8 ALIGN CONTROL JOINT AT WINDOW AND/OR DOOR OPNG CORNER AS SHOWN
- 9 BLDG ADDRESS NUMBERS AS SELECTED BY TENANT AND ZONING CODE COMPLIANT

Finish Notes

- A1 ALUMINUM STOREFRONT, CLEAR ANODIZED FINISH
- B1 BRICK VENEER- MFR: ACME, STANDARD SIZE, COLOR SELECTED BY ARCHITECT
- B2 BRICK VENEER- MFR: ACME, STANDARD SIZE, COLOR SELECTED BY ARCHITECT
- C1 PREFINISHED COPING - COLOR SELECTED BY ARCHITECT
- C2 PREFINISHED SCUPPER & DS - COLOR SELECTED BY ARCHITECT
- D1 FABRIC AWNING - COLOR SELECTED BY ARCHITECT
- E1 EIFS - MFR: SYNERGY, FINE FINISH, COLOR SELECTED BY ARCHITECT

PRELIMINARY
NOT FOR CONSTRUCTION
THIS DOCUMENT IS ISSUED FOR DESIGN REVIEW ONLY

PHOENIX
ARCHITECTURE
9475 Kenwood Road, Suite 13
Cincinnati, Ohio 45212
www.phoenixarch.com

PROPOSED BUILDING FOR
MATTRESSFIRM
7906 MONTGOMERY ROAD
CINCINNATI OHIO 45236

ISSUE	DATE
PRELIMINARY ISSUE	11 DEC 2015
PRELIMINARY REVIEW	18 DEC 2015
OWNER PLAN REVISIONS	27 JAN 2016
PJ.D. SUBMITTAL	02 FEB 2016
FINAL TENANT DRAWINGS	15 FEB 2016

COPYRIGHT:
PHOENIX ARCHITECTURE, LLC
PROJ. MANAGER: JW / TM
JOB NO. 008827.01
BUILDING ELEVATIONS
A5.01