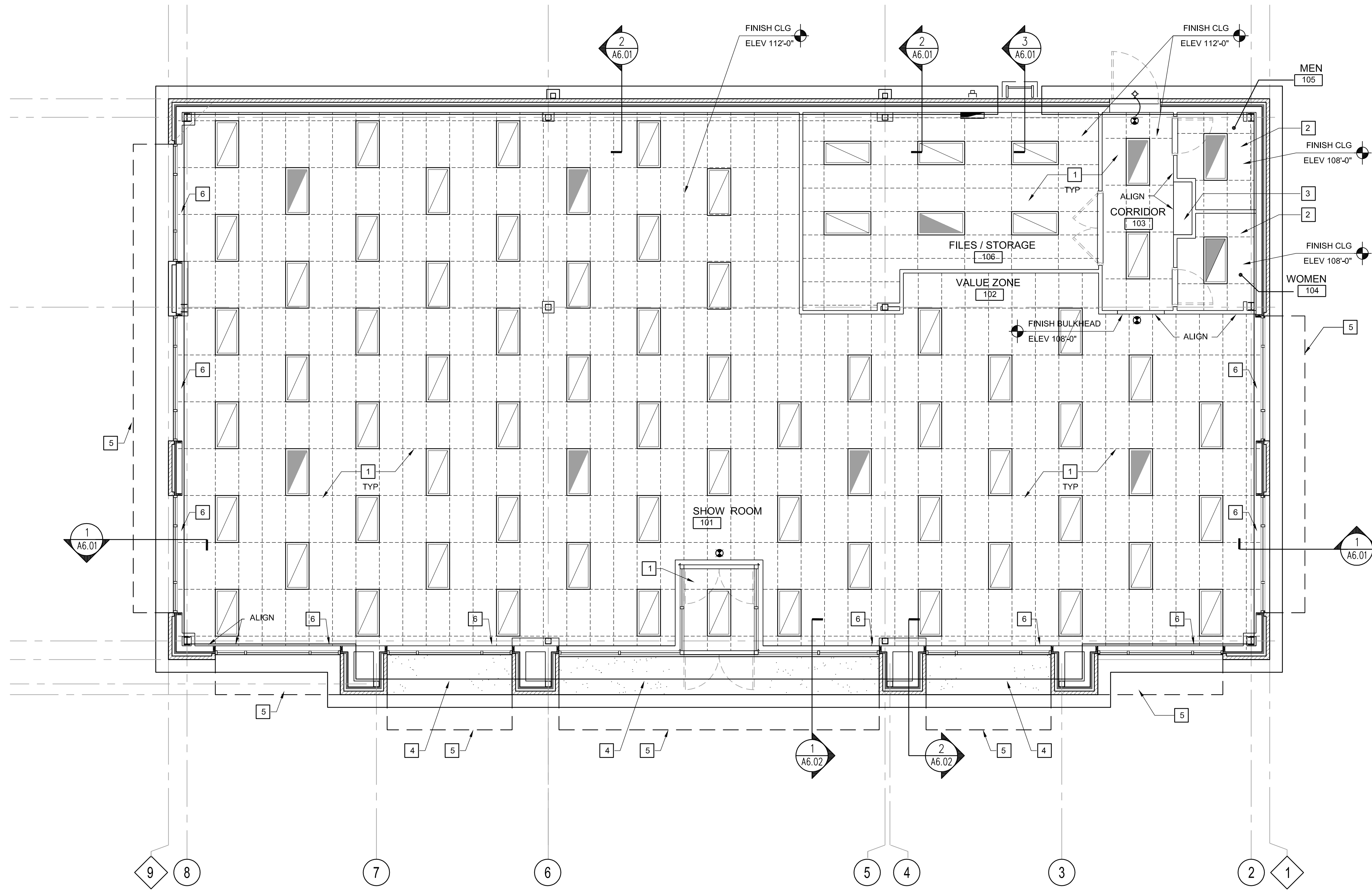


Project General Notes

A. REFER TO COVER SHEET FOR TYPICAL PROJECT GENERAL NOTES

General Notes - Reflected Ceiling Plan

- A. ALIGNMENT - SEE ALSO FLOOR & CEILING PLAN NOTES - COORD STUD LOCATIONS SO THAT FACES OF CEILING FEATURES, BULKHEADS, AND/OR PARTITION TYPES ALIGN AS INDICATED. PROVIDE FLUSH AND CONTINUOUS FINISH FACE. PROVIDE CONTROL JOINTS PER MFG RECOMMENDATIONS.
- B. OBC CH7 - FIRE RATED ASSEMBLIES - COMPLY WITH ALL APPLICABLE CODES INCLUDING OBC AND OMC. PROVIDE PROTECTIVE ASSEMBLIES AT PENETRATIONS THRU FIRE RATED AND NON FIRE RATED ASSEMBLIES. PROVIDE PROTECTIVE ASSEMBLIES FOR MEMBRANE PENETRATIONS OF HORIZ AND VERT FIRE RATED ASSEMBLIES IN COMPLIANCE WITH OBC ALSO.
- C. OBC 1006.2 - MEANS OF EGRESS ILLUMINATION - AT ALL TIMES, THE MEANS OF EGRESS ILLUMINATION SHALL NOT BE LESS THAN (1) FC AT THE WALKING SURFACE LEVEL. PROVIDE NIGHT LIGHTING, EMERGENCY EGRESS LIGHTING AND EXIT DISCHARGE LIGHTING.
- D. OBC 1203.2 - SOFFIT VENTS - PROV VENTING IN ATTIC. SPACES AT CANOPIES, OVERHANGS, BRACED PARAPETS, PORTE COCHERES AND OTHER ENCLOSED VOLUMES. ROOFS- 1 SF FREE VENTILATION AREA PER 150 SF OF AREA ENCLOSED
- E. CEILING ACCESS - WHERE REQD BY BLDG CODE OR BY MEP TRADE, PROVIDE ACCESS PANELS -COMPLY WITH PROPER FIRE RATED OPENING PROTECTION FOR FIRE RATED ASSEMBLIES. PROVIDE LAYOUT COORDINATION DWG INDICATING ALL PROPOSED LOCATIONS FOR APPROVAL BY ARCHITECT & OWNER.
- F. MEP DEVICES - SEE PLUMB, ELEC, FP, AND MECH DRWGS AND FOR ALL SPRINKLER HEADS, DIFFUSERS, LIGHTING, AIR GRILLES ETC. COORDINATE WITH ALL DESIGN-BUILD CONTRACTORS.
- G. CONTROL JOINTS - COMPLY WITH MFG RECOMMENDATIONS FOR CONTROL JOINTS IN ALL SOFFIT AND BULKHEAD MATERIALS. INCLUDING EXTERIOR AND INTERIOR LOCATIONS - SEE SOFFIT VENT AND LIGHT LOCATIONS - SUBMITTAL REQD INDICATING LAYOUT FOR ARCHITECT/OWNER APPROVAL.
- H. CEILING SYSTEMS / FIXTURE SUPPORT - SUPPORT FROM BLDG STRUCTURE ONLY. DO NOT SUSPEND FROM MEP, FP COMPONENTS. ALL HANGERS / SUPPORTS / SYSTEMS TO COMPLY WITH APPLICABLE CODES.
- I. CEILING HUNG FIXTURES, EQUIPMENT AND ACCESSORIES - PROVIDE METAL STRAP REINFORCING OR FRD WOOD BLOCKING, STUD FRAMING, OR UNISTRUT SUPPORT SYSTEM. COMPLY W/ MFR RECOMMENDATIONS.
- J. EXTERIOR EXPOSURE - AT LOCATIONS OF EXTERIOR/OPEN AIR EXPOSURE (ENCLOSED OR UNENCLOSED), PROVIDE ARMSTRONG G-90 GRID, OR EQUIV, AND EXTERIOR RATED VINYL FACED GYPSUM CLG PANELS. COMPLY W/ MFR RECOMMENDATIONS. CONFIRM CAPACITY TO SUPPORT INSULATION.
- K. HOLD DOWN CLIPS - PROVIDE CLIPS AND STRUTS AT LOCATIONS OF EXTERIOR LAY-IN CEILING SUBJECT TO WIND FORCES, INCLUDING CANOPIES, OPEN AND PARTIALLY OPEN GARAGES, AND AREAS NEAR OVERHEAD DOOR OPENINGS. INCLUDE HOLD DOWN CLIPS AT ROOMS WITH PRESSURE RELEASE GASEOUS/DRY FIRE PROTECTION.
- L. DESIGN - BUILD - FIXTURE SUBMITTAL REQD TO OWNER FOR ACTUAL FIXTURE SPECIFICATIONS.
- M. INFORMATION IS TAKEN FROM ELECTRICAL AND MECHANICAL DRAWINGS AND IS SHOWN FOR REFERENCE - CONTRACTOR TO NOTIFY THE ARCHITECT IF THERE ARE DISCREPANCIES BETWEEN THE ARCHITECTURAL CEILING PLANS AND THE MEP DRAWINGS.
- N. INTERIOR DIMENSIONS ARE TO FACE OF STUD OR METAL FRAMING-TYPICAL UNO - COORDINATE WITH FLOOR PLAN DIMENSIONING
- O. TYPICAL - CENTER LIGHT FIXTURE OR SPRINKLER HEAD IN CEILING TILE UNLESS INDICATED OTHERWISE.
- P. TYPICAL - PAINT ALL CUT EDGES OF CEILING TILES WITH MFG RECOMMENDED TOUCH-UP PAINT. PROV EXTRA SUPPLY FOR OWNER.
- Q. CEILING CONTRACTOR TO CUT AND MOUNT CEILING RECESSED FIXTURES AND OTHER FIXTURES IN METAL CEILING. FIXTURES BY ELECTRICAL CONTRACTOR. COORDINATE WITH ELECTRICAL CONTRACTOR.
- R. TYPICAL - CENTER CEILING GRIDS IN INDIVIDUAL ROOMS. CENTER OF GRID OR CENTER OF PAD EQUALS CENTER OF ROOM. UNLESS NOTED OR DIMENSIONED OTHERWISE. NOTIFY ARCHITECT IF PERIMETER CUT TILES MEASURE LESS THAN 6".
- S. GC TO CONDUCT COORDINATION MEETINGS TO IDENTIFY ANY CONFLICTS, CLEARANCE OR CEILING HEIGHT ISSUES PRIOR TO ANY INSTALLATION. PROVIDE DRAWING TO OWNER INDICATING ELEVATIONS AND LOCATIONS OF CONFLICTING ELEMENTS FOR RESOLUTION.
- T.



Construction / Plan Notes

- 1 2x4 SUSPENDED ACOUSTIC CEILING ASSEMBLY
• CEILING PAD MFR: ARMSTRONG ITEM NO. 769, NON-DIRECTIONAL, SQUARE EDGE, MEDIUM TEXTURE, COLOR: 'WHITE'
• CEILING GRID MFR: ARMSTRONG 15/18"
- 2 2x4 SUSPENDED ACOUSTIC CEILING ASSEMBLY
• CEILING PAD MFR: ARMSTRONG VINYL COATED, NON-DIRECTIONAL, SQUARE EDGE, SMOOTH TEXTURE, COLOR: 'WHITE'
• CEILING GRID MFR: ARMSTRONG 15/18"
• SUBMIT PRODUCT FOR TENANT REVIEW & APPROVAL
- 3 5/8" GYPSUM BD CEILING ON 3-5/8" CFMF AT 8'-0" AFF
- 4 5/8" EXTERIOR GYPSUM BD CEILING ON 3-5/8" CFMF. REFER TO WALL SECTION INDICATED ON DWGS
- 5 DASH LINE DENOTES PREFABRICATED FABRIC AWNING ASSEMBLY BY TENANT
- 6 5/8" GYPSUM BD BULKHEAD ON 3-5/8" CFMF. ALIGN WITH ADJACENT PARTITION FOR SMOOTH FINISH TRANSITION
- 7 INTERIOR SIGNAGE BY TENANT. GC TO COORDINATE FOR ELECTRICAL REQUIREMENTS

Key to Ceiling Plan

- 2' x 4' FLUORESCENT LAY-IN FIXTURE
- 2' x 4' FLUORESCENT LAY-IN FIXTURE NIGHT LIGHT/ EMERGENCY LIGHT WITH BATTERY BACK-UP
- FLUORESCENT STRIP FIXTURE CONCEALED FIXTURE FROM VIEW
- EXIT SIGN WITH EMERGENCY BATTERY BACK-UP
- EXIT SIGN WITH EXTERIOR EXIT DISCHARGE LIGHT FIXTURE & EMERGENCY BATTERY BACK-UP

NOTE: OBC CH 10 - MEANS OF EGRESS ILLUMINATION - AT ALL TIMES, THE MEANS OF EGRESS ILLUMINATION SHALL NOT BE LESS THAN 1 FC AT THE WALKING SURFACE LEVEL. PROVIDE NIGHT LIGHTING, EMERGENCY EGRESS LIGHTING AND EXIT DISCHARGE LIGHTING.

REFLECTED CEILING PLAN
SCALE: 3/16" = 1'-0"

PRELIMINARY
NOT FOR CONSTRUCTION
THIS DOCUMENT IS ISSUED FOR DESIGN REVIEW ONLY

PHOENIX ARCHITECTURE
9475 Kenwood Road, Suite 113
Cincinnati, Ohio 45242
www.phoenixarch.com

PROPOSED BUILDING FOR
MATRESSFIRM
7906 MONTGOMERY ROAD
CINCINNATI OHIO 45236

DATE	ISSUE
11 DEC 2015	PRELIMINARY ISSUE
15 DEC 2015	PRELIMINARY REVIEW
27 JAN 2016	OWNER PLAN REVISIONS
02 FEB 2016	PJ.D. SUBMITTAL
15 FEB 2016	FINAL TENANT DRAWINGS

COPYRIGHT:
PHOENIX ARCHITECTURE, LLC
PROJ MANAGER: JW / TM
JOB NO. 008827.01

REFLECTED CEILING PLAN

A3.01