

BASIS OF BEARINGS:
 O.R. 13073, PG. 1571

DEED OF RECORD
 O.R. 13073, PG. 1571



VICINITY MAP
 NORTH EAST OF CINCINNATI
 (NOT TO SCALE)

- LEGEND**
 STANDARD SYMBOLS THAT MAY APPEAR ON THIS DRAWING:
- IP FOUND-5/8"
 - ⊙ IP FOUND-1"
 - IP SET - 5/8"
 - IP SET - 1"
 - * IRON PIPE FOUND
 - PK FOUND
 - MAG NAIL SET
 - ⊗ RR SPIKE FOUND
 - ⊗ RR SPIKE SET
 - CONC. MON. FOUND
 - HUB & TACK SET
 - △ STONE FOUND
 - ⊗ CROSS NOTCH SET
 - ◆ BENCH MARK
 - ▬ LATH SET ON-LINE
 - X — FENCE
 - E — ELECTRIC UTILITY
 - ⊕ FIRE HYDRANT (FH)
 - ⊙ MANHOLE (MH)
 - ⊕ UTILITY POLE (UP)
 - DRAIN
 - WATER VALVE (WV)
 - CATCH BASIN (CB)
 - ⊗ GAS VALVE (GV)
 - ⊙ CLEANOUT (CO)
 - ⊙ WATER METER (WM)
 - ⊙ LIGHT POLE (LP)

CURRENT OWNER:
 AREA: 1.2274 ACRES
 CONTINGENT HOLDINGS, LLC
 O.R. 13073, PG. 1571
 AUDITOR'S PARCEL: 600-0013-0064
 600-0013-0065

SITE PLAN PROPOSED CONCRETE PAD

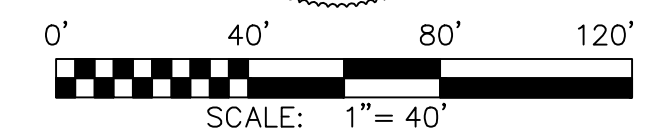
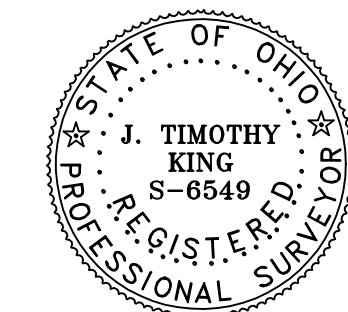
SITUATE IN
 SECTION 1, TOWN 3, E.R. 2
 SYCAMORE TOWNSHIP
 HAMILTON COUNTY, OHIO
 SHEET 1 OF 2

8/22/16

J. T. KING & CO., INC.
 CIVIL ENGINEERS • LAND SURVEYORS
 9200 MONTGOMERY ROAD • SUITE "21b"
 CINCINNATI, OHIO 45242
 TELEPHONE: (513) 793-7667 FACSIMILE: (513) 793-7667

MARCH FIRST MANUFACTURING (KEVIN KLUENER)
 7885 EAST KEMPER ROAD
 CINCINNATI, OHIO 45249

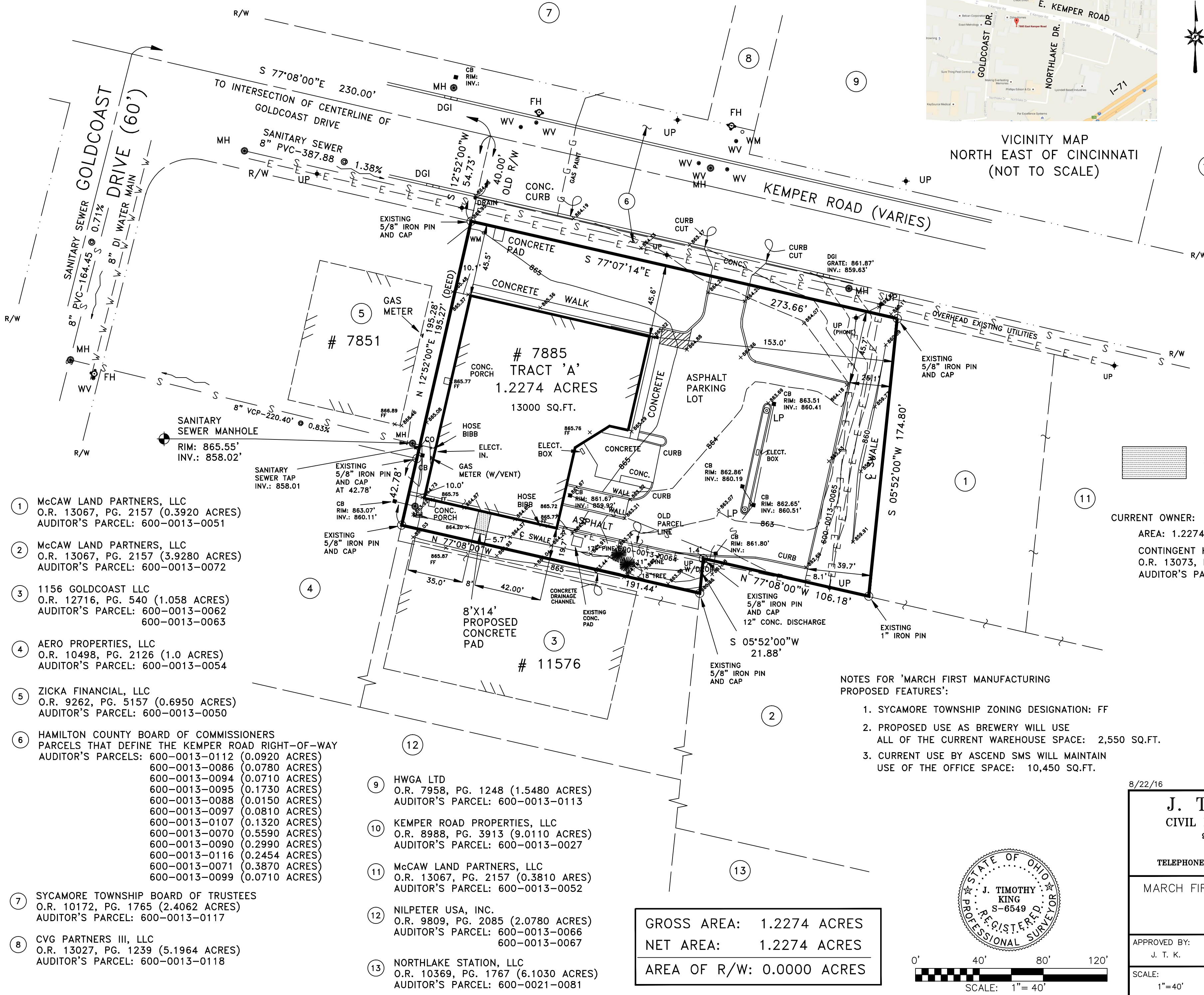
APPROVED BY: J. T. K.	DRAWN BY: NORDLOH	DATE: 7/11/16	.CRD NAME: KLUENER.CRD
SCALE: 1"=40'	.DWG NAME: kluener_a.dwg		FILE No. 16202-S



GROSS AREA: 1.2274 ACRES
 NET AREA: 1.2274 ACRES
 AREA OF R/W: 0.0000 ACRES

NOTES FOR 'MARCH FIRST MANUFACTURING
 PROPOSED FEATURES':

1. SYCAMORE TOWNSHIP ZONING DESIGNATION: FF
2. PROPOSED USE AS BREWERY WILL USE ALL OF THE CURRENT WAREHOUSE SPACE: 2,550 SQ.FT.
3. CURRENT USE BY ASCEND SMS WILL MAINTAIN USE OF THE OFFICE SPACE: 10,450 SQ.FT.



1. McCAW LAND PARTNERS, LLC
 O.R. 13067, PG. 2157 (0.3920 ACRES)
 AUDITOR'S PARCEL: 600-0013-0051
2. McCAW LAND PARTNERS, LLC
 O.R. 13067, PG. 2157 (3.9280 ACRES)
 AUDITOR'S PARCEL: 600-0013-0072
3. 1156 GOLDCOAST LLC
 O.R. 12716, PG. 540 (1.058 ACRES)
 AUDITOR'S PARCEL: 600-0013-0062
 600-0013-0063
4. AERO PROPERTIES, LLC
 O.R. 10498, PG. 2126 (1.0 ACRES)
 AUDITOR'S PARCEL: 600-0013-0054
5. ZICKA FINANCIAL, LLC
 O.R. 9262, PG. 5157 (0.6950 ACRES)
 AUDITOR'S PARCEL: 600-0013-0050
6. HAMILTON COUNTY BOARD OF COMMISSIONERS
 PARCELS THAT DEFINE THE KEMPER ROAD RIGHT-OF-WAY
 AUDITOR'S PARCELS: 600-0013-0112 (0.0920 ACRES)
 600-0013-0086 (0.0780 ACRES)
 600-0013-0094 (0.0710 ACRES)
 600-0013-0095 (0.1730 ACRES)
 600-0013-0088 (0.0150 ACRES)
 600-0013-0097 (0.0810 ACRES)
 600-0013-0107 (0.1320 ACRES)
 600-0013-0070 (0.5590 ACRES)
 600-0013-0090 (0.2990 ACRES)
 600-0013-0116 (0.2454 ACRES)
 600-0013-0071 (0.3870 ACRES)
 600-0013-0099 (0.0710 ACRES)
7. SYCAMORE TOWNSHIP BOARD OF TRUSTEES
 O.R. 10172, PG. 1765 (2.4062 ACRES)
 AUDITOR'S PARCEL: 600-0013-0117
8. CVG PARTNERS III, LLC
 O.R. 13027, PG. 1239 (5.1964 ACRES)
 AUDITOR'S PARCEL: 600-0013-0118
9. HWGA LTD
 O.R. 7958, PG. 1248 (1.5480 ACRES)
 AUDITOR'S PARCEL: 600-0013-0113
10. KEMPER ROAD PROPERTIES, LLC
 O.R. 8988, PG. 3913 (9.0110 ACRES)
 AUDITOR'S PARCEL: 600-0013-0027
11. McCAW LAND PARTNERS, LLC
 O.R. 13067, PG. 2157 (0.3810 ACRES)
 AUDITOR'S PARCEL: 600-0013-0052
12. NILPETER USA, INC.
 O.R. 9809, PG. 2085 (2.0780 ACRES)
 AUDITOR'S PARCEL: 600-0013-0066
 600-0013-0067
13. NORTHLAKE STATION, LLC
 O.R. 10369, PG. 1767 (6.1030 ACRES)
 AUDITOR'S PARCEL: 600-0021-0081