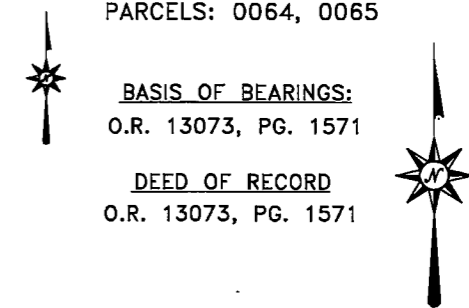


Existing Features

BOOK: 600 PAGE: 0013  
 PARCELS: 0064, 0065



- LEGEND**  
 STANDARD SYMBOLS THAT MAY APPEAR ON THIS DRAWING:
- IP FOUND-5/8"
  - ⊙ IP FOUND-1"
  - IP SET - 5/8"
  - ⊙ IP SET - 1"
  - \* IRON PIPE FOUND
  - ⊙ PK FOUND
  - ⊙ MAG NAIL SET
  - ⊙ RR SPIKE FOUND
  - ⊙ RR SPIKE SET
  - ⊙ CONC. MON. FOUND
  - ⊙ HUB & TACK SET
  - ⊙ STONE FOUND
  - ⊙ CROSS NOTCH SET
  - ⊙ BENCH MARK
  - ⊙ LATH SET ON-LINE

- L- EDGE OF LANDSCAPE BED
  - SHRUBBERY
  - X- FENCE
  - E- ELECTRIC UTILITY
  - ⊙ FIRE HYDRANT (FH)
  - ⊙ MANHOLE (MH)
  - ⊙ UTILITY POLE (UP)
  - ⊙ DRAIN
  - ⊙ WATER VALVE (WV)
  - ⊙ CATCH BASIN (CB)
  - ⊙ GAS VALVE (GV)
  - ⊙ CLEANOUT (CO)
  - ⊙ WM WATER METER (WM)
  - ⊙ LP LIGHT POLE (LP)
- CURRENT OWNER:  
 AREA: 1.2274 ACRES  
 CONTINGENT HOLDINGS, LLC  
 O.R. 13073, PG. 1571  
 AUDITOR'S PARCEL: 600-0013-0064  
 600-0013-0065

**SITE PLAN  
 PROPOSED  
 CONCRETE PAD**

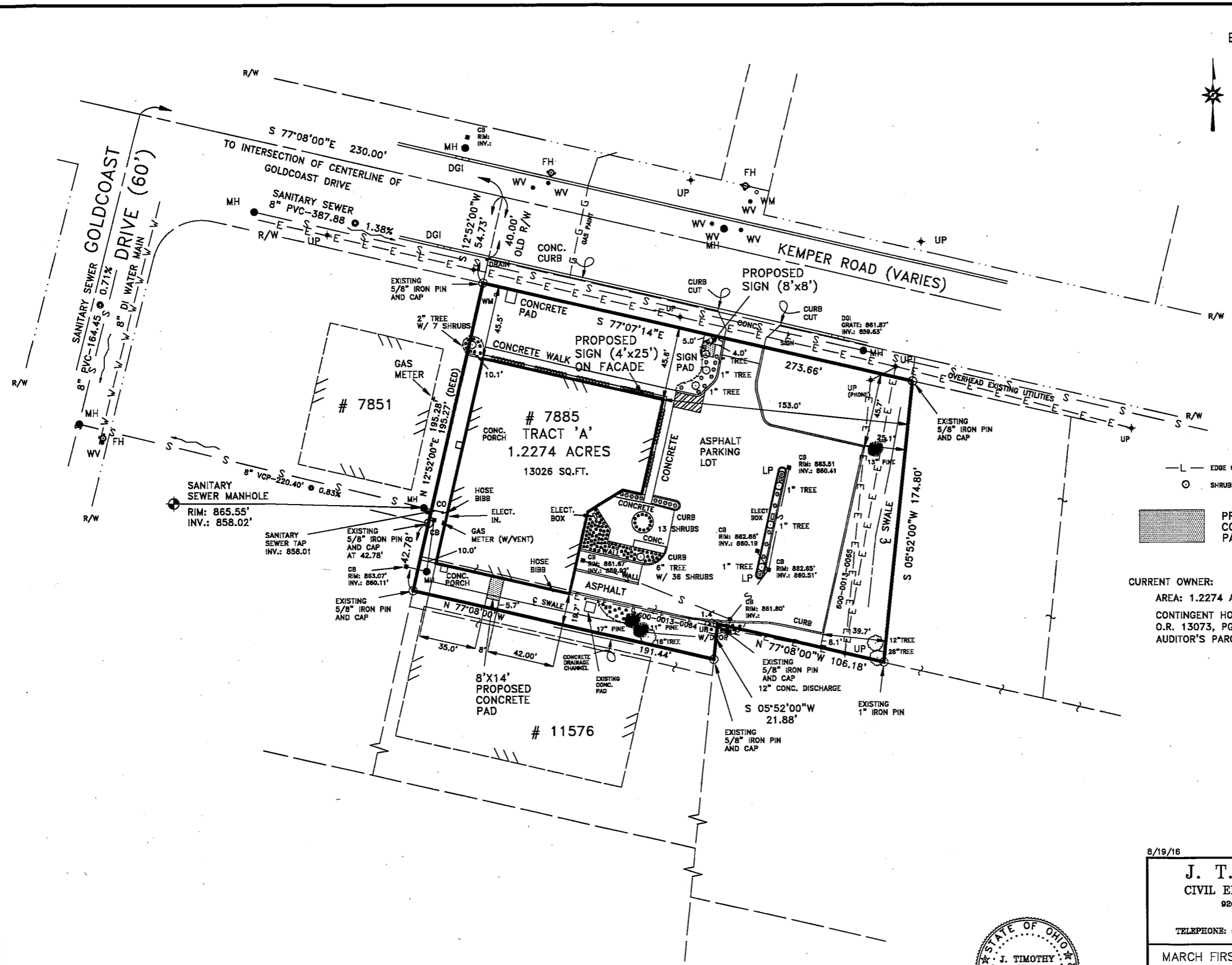
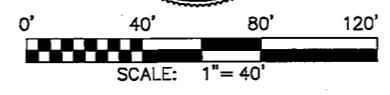
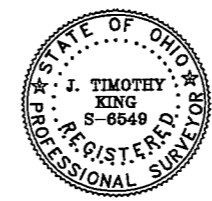
SITUATE IN  
 SECTION 1, TOWN 3, E.R. 2  
 SYCAMORE TOWNSHIP  
 HAMILTON COUNTY, OHIO  
 SHEET 2 OF 2

8/19/16

**J. T. KING & CO., INC.**  
 CIVIL ENGINEERS • LAND SURVEYORS  
 9200 MONTGOMERY ROAD • SUITE "215"  
 CINCINNATI, OHIO 45242  
 TELEPHONE: (513) 793-7667 FACSIMILE: (513) 793-7667

MARCH FIRST MANUFACTURING (KEVIN KLEUNER)  
 7885 EAST KEMPER ROAD  
 CINCINNATI, OHIO 45249

APPROVED BY: J. T. K.	DRAWN BY: NORDLOH	DATE: 7/11/16	.CRD NAME: KLEUNER.CRD
SCALE: 1"=40'	.DWG NAME: KLEUNER_B.DWG	FILE No. 16202-S	



SYCAMORE TOWNSHIP  
 PLANNING COMMISSION  
 MAR 1 2016  
 RECEIVED