

MANA - Day 4 Ex 41

ZOONOTIC DISEASE CONCERNS

Presented by Jennifer Polis, DVM, MPH

OUTLINE

- ▶ Pet concerns
 - ▶ Project recommendations to negate these concerns
- ▶ Wildlife concerns
 - ▶ Project recommendations to negate these concerns

ZOONOTIC DISEASES

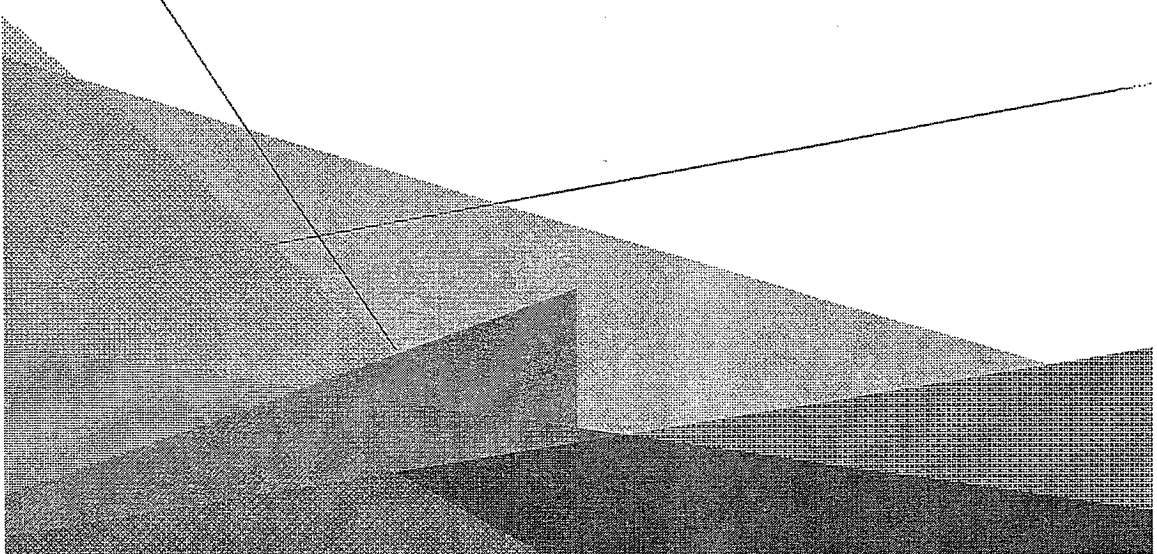
- ▶ These are diseases that are transmissible between humans and animals
- ▶ There are over 150 known zoonotic diseases

PETS

- ▶ Over the past decades the purpose of pets have changed from working animals to companions
- ▶ Statistics show 68% of U.S. households (85 million families) own pets
 - ▶ 1988 only 56% of U.S. households had pets
- ▶ Most of these households have multiple pets
- ▶ We can expect to see these numbers reflected in our future neighbors

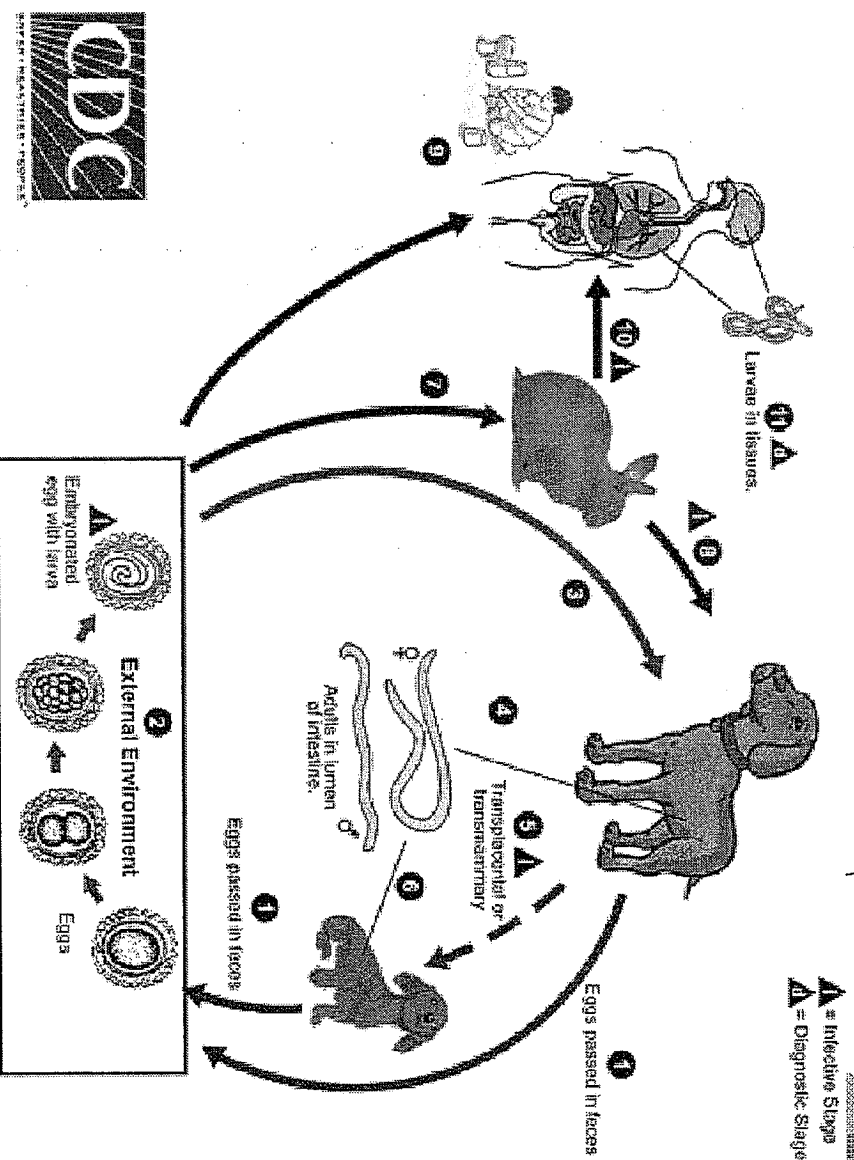
WARNING

▶GRAPHIC PICTURES WILL BE
SHOWN DURING THIS
PRESENTATION

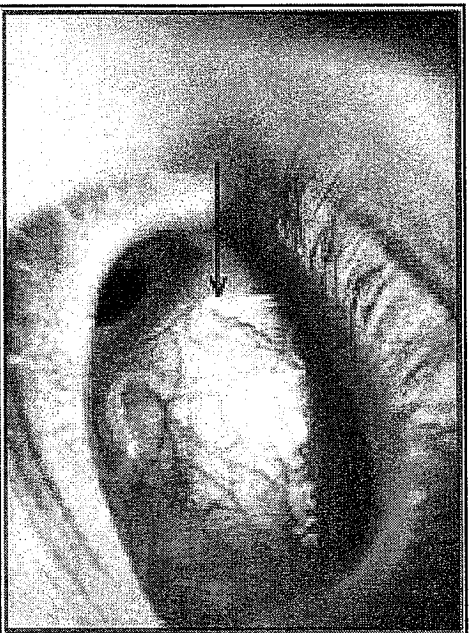


TOXOCARIASIS - ROUNDWORMS

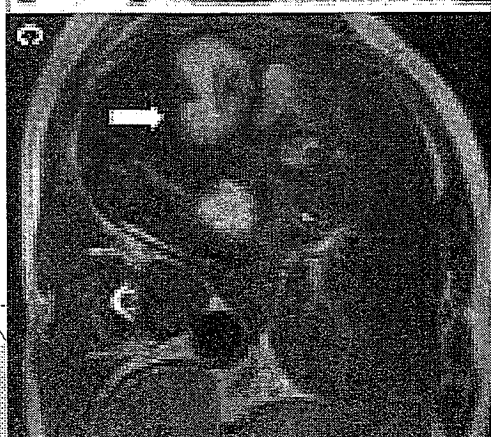
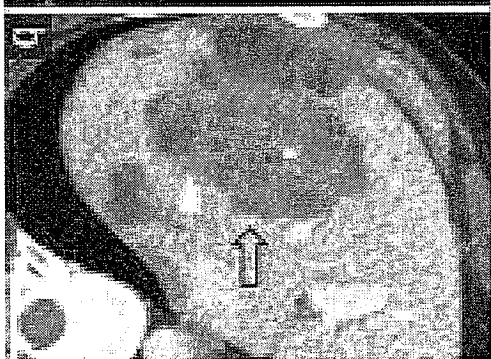
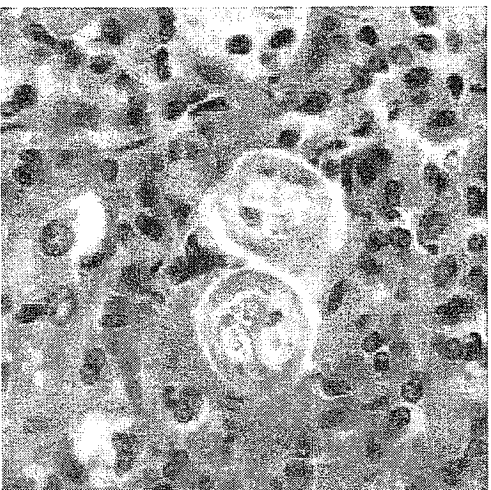
- ▶ Intestinal parasite of dogs and cats
- ▶ Fecal oral route
- ▶ Eggs passed in animal feces
- ▶ Humans are accidental hosts
- ▶ These parasites get lost in our bodies



Ocular Larval Migrants - SECOND LEADING CAUSE OF BLINDNESS IN CHILDREN AFTER TRAUMA

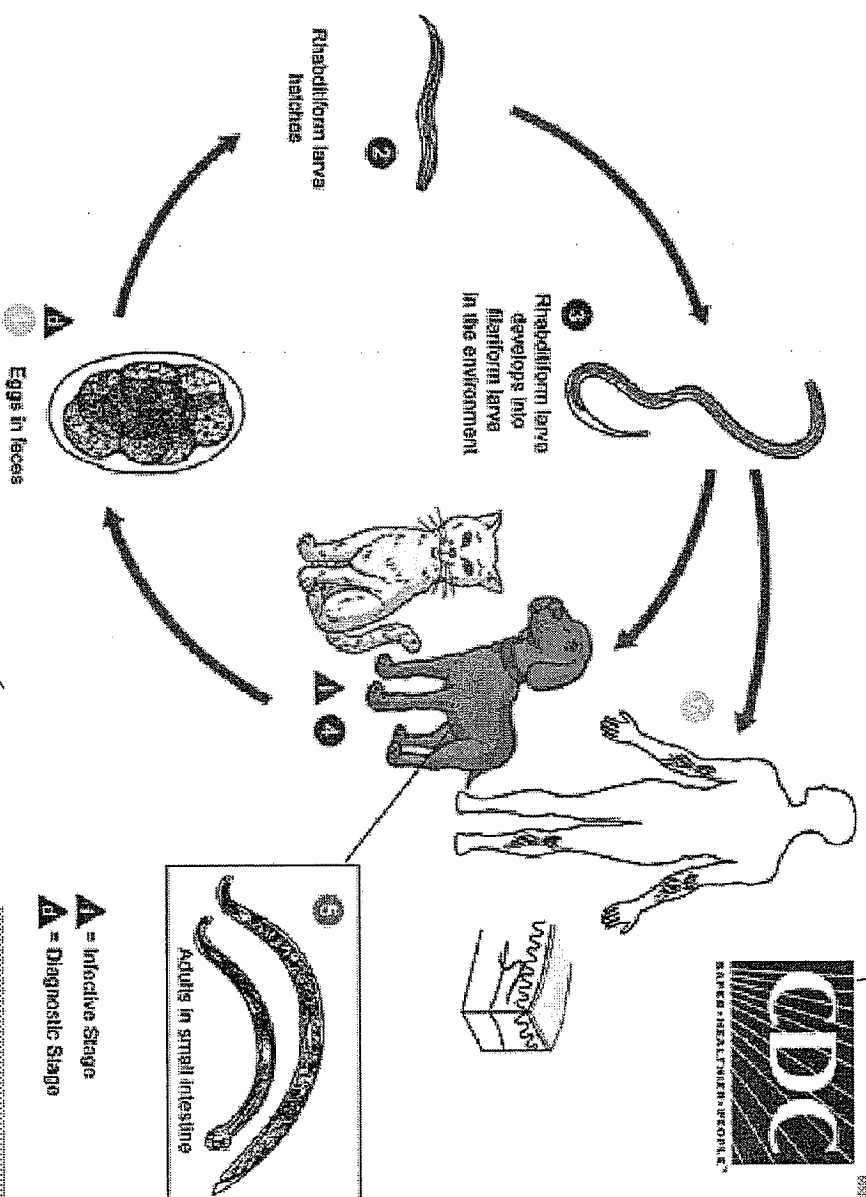


Visceral Larval Migrants

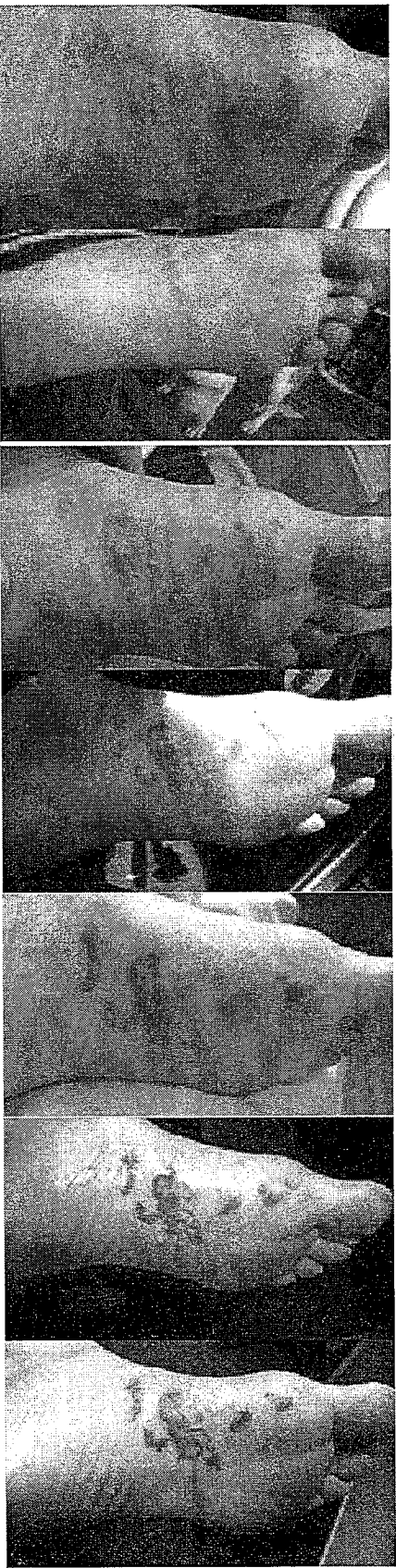


ANCYLOSTOMA - HOOKWORMS

- ▶ Similar fecal oral transmission as roundworms
- ▶ Can penetrate intact human skin
- ▶ In humans results in cutaneous larval migrans



CUTANEOUS LARVAL MIGRANS



July 4th

July 6th

July 8th

July 9th

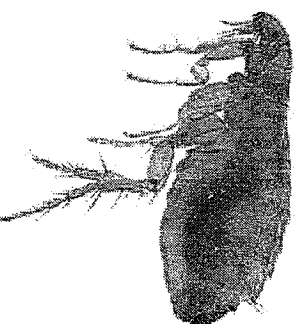
July 10th

July 10th

July 11th

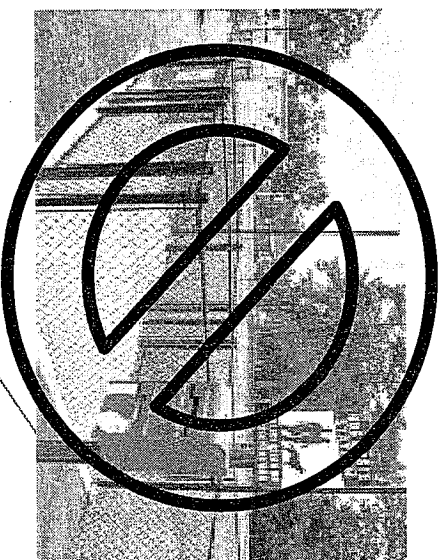
BARTONELLA - CAT SCRATCH DISEASE

- ▶ Fleas transmit this bacterial infection to cats (*Bartonella henselae*)
- ▶ Transmitted through cat scratch or bite to people
- ▶ More likely to cause problems in people with weaker immune systems (young children, seniors, auto-immune disorders, transplant patients, etc.)
- ▶ Symptoms:
 - ▶ Fever
 - ▶ Swollen lymph nodes
 - ▶ Pustules
 - ▶ Rarely eye infections, severe muscle pain, and encephalitis
- ▶ Treatment:
 - ▶ Antibiotics

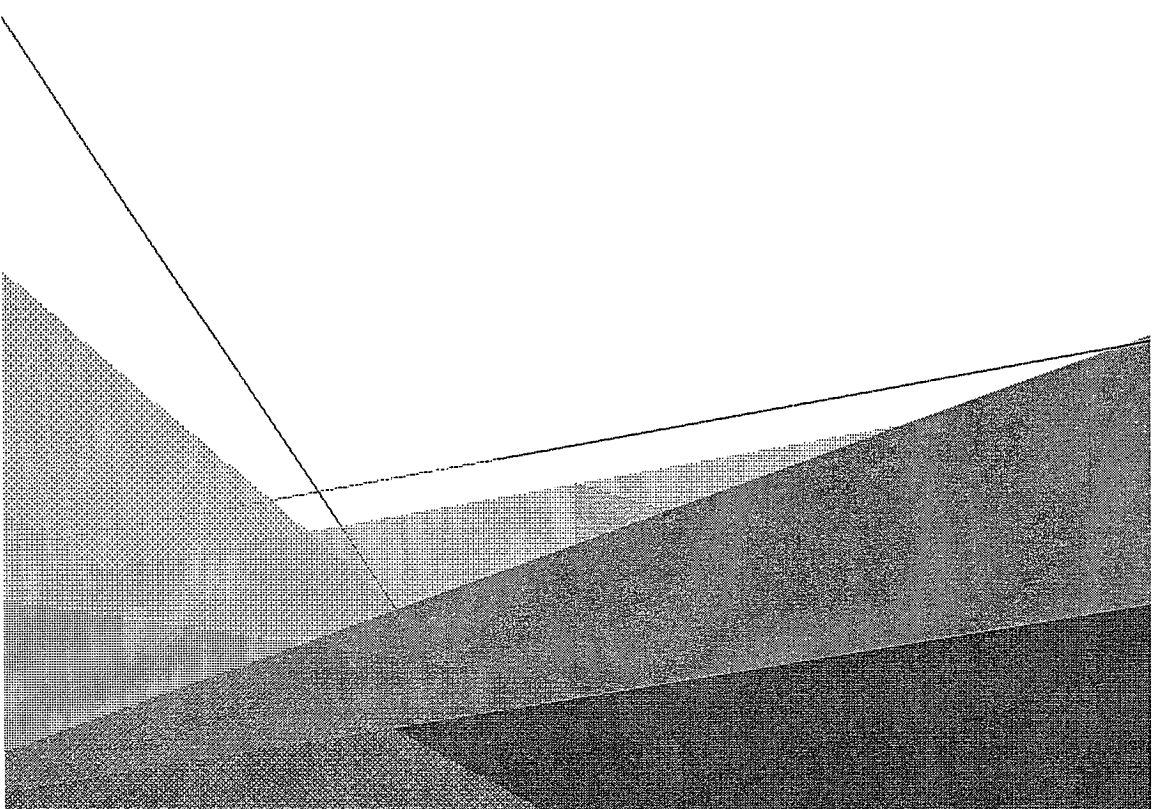


PROJECT RECOMMENDATIONS

- ▶ LARGE Green walking space
- ▶ Doggie poop bag stations
- ▶ Regular maintenance to clean up feces
- ▶ REQUIRE yearly exams with internal and external parasite checks and vaccinations



QUESTIONS?



WILDLIFE

- ▶ Stable habitat for over 5 decades
- ▶ This translates into over 100 generations for small rodents

