

Bank of America



7796 MONTGOMERY RD.
CINCINNATI, OH 45236



10101 Reunion Place
Suite 500
San Antonio, TX 78216

P 210. 886. 0644
waltonsignage.com

© 2017 WALTON ALL RIGHTS RESERVED

Client: BANK OF AMERICA
Address: 7796 MONTGOMERY RD.
City/State: CINCINNATI, OH 45236
Sales: BP Designer: RH
Date: 10.17.18 PM EN

This is an original drawing created by Walton. It is submitted for your personal use, however, it shall at all times remain the property of Walton. It may be used in connection with the project being planned for you by Walton, but not otherwise. You are not authorized to show these drawings to anyone outside your organization, nor is it to be reproduced, used, copied or exhibited in any fashion.

Revision:	
R1)	10/24/18 Add letters on side elevation - RH
R2)	11/01/18 Revise letter placement / vinyl - RH
R3)	11/05/18 Revise ML letters - RH
R4)	11/06/18 Revise site plan - RH
R5)	11/09/18 Revise elevations - RH

Signs will be manufactured with 120 or 277 Volts A/C. All Primary electrical service to the sign, and final connection thereof, is the responsibility of the buyer. All work is to be done in accordance with the purchase agreement attached hereto. In case of variance between the specifications of the purchase agreement and this drawing, the drawing shall prevail.

This sign is intended to be installed in accordance with the requirements of Article 600 of the National Electrical Code and/or other applicable local codes. This includes proper grounding and bonding of the sign.

PAGE SIZE: 11" x 17"

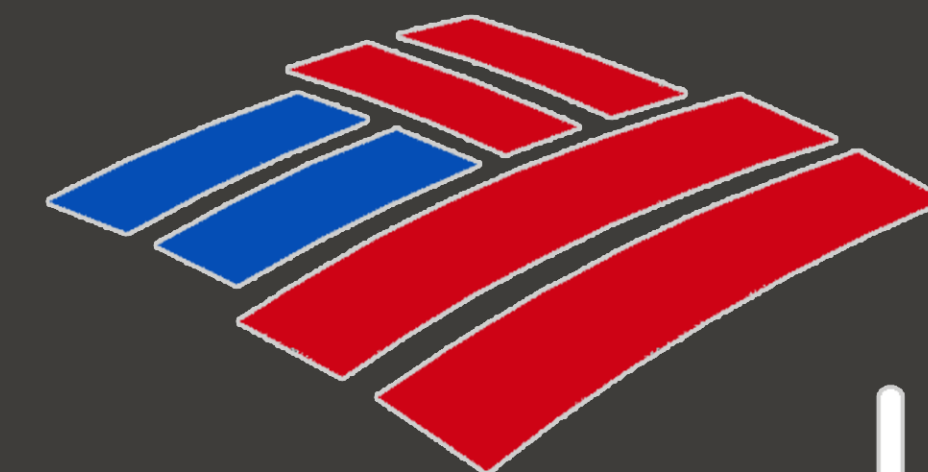
Approvals:

Sales:	Date:
P.M.:	Date:
Design:	Date:
Client:	Date:

CID203495
Sheet: 1 of 12

Bank of America

Kenwood, Ohio



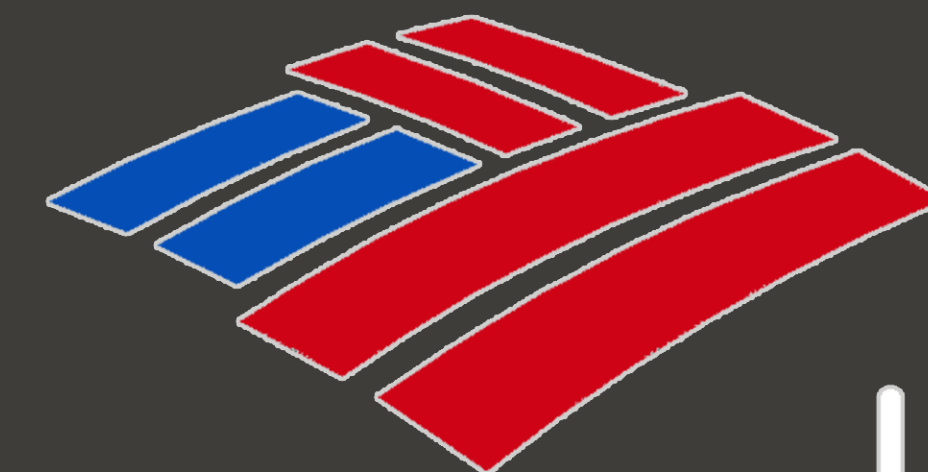
Front Elevation



Side Elevation

Architectural Design Collaborative, Inc

Bank of America
Kenwood, Ohio



Back Elevation



Side Elevation

Bank of America



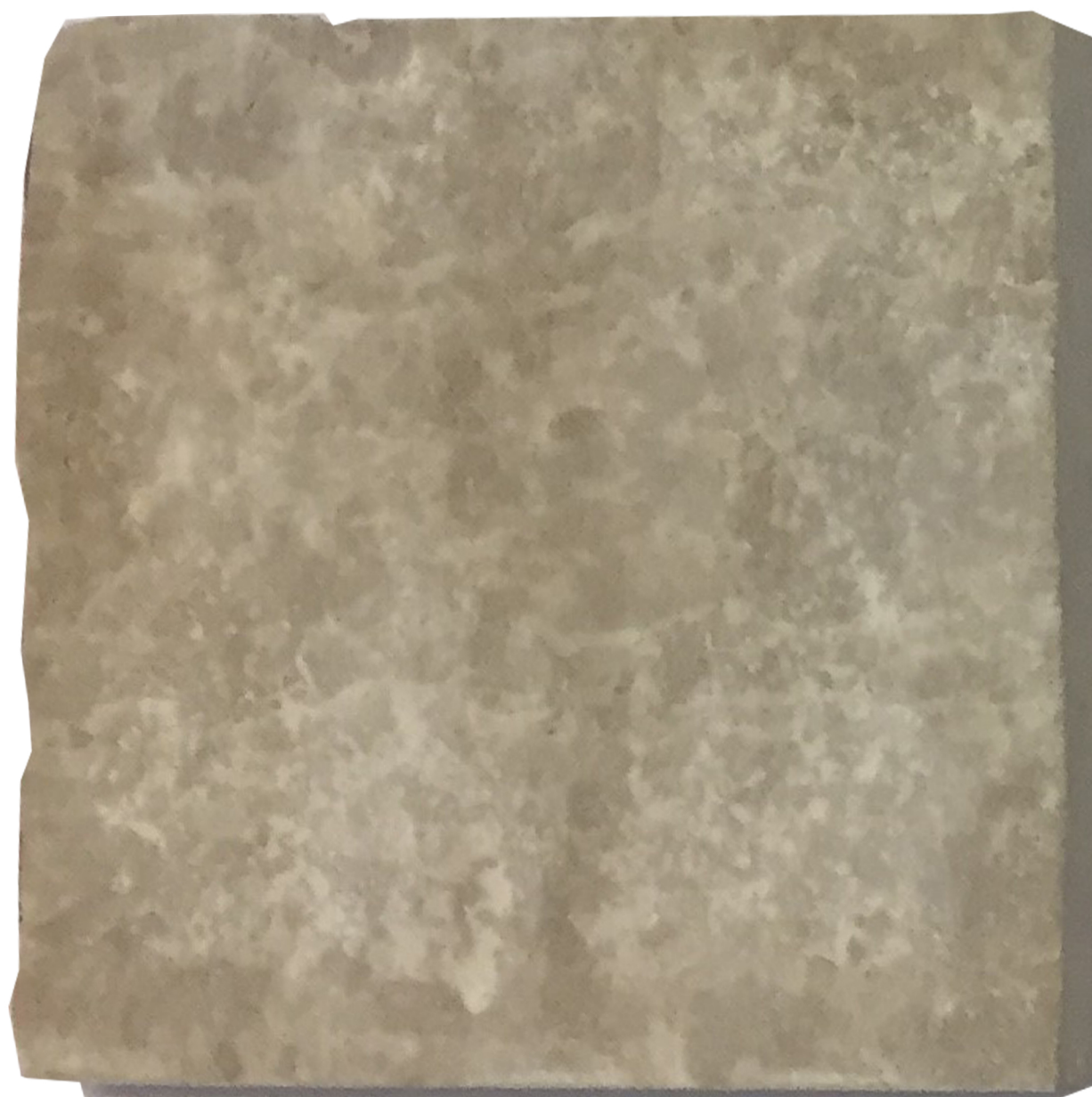
**NEW STORE
KENWOOD, OHIO**



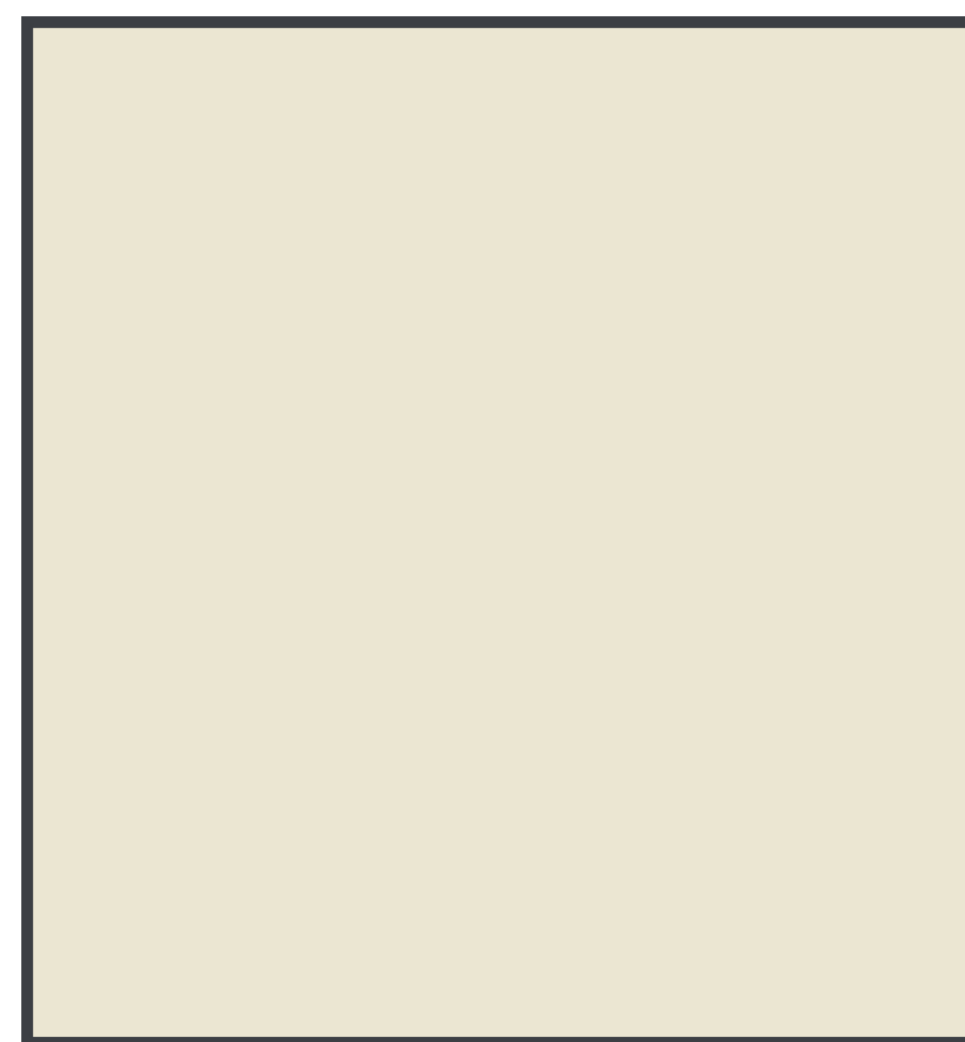
**KYNAR 500
CITADEL ARCHITECTURAL PRODUCTS
SERIES F, RESERVE WHITE
CUTRAINWALL & STOREFRONT METAL**



**METAL SERIES I
CITADEL ARCHITECTURAL PRODUCTS
CLEAR SATIN ANODIZED
ACM PANEL**



**STN-1 KASOTA GREY VEIN SPLIT LINEAR STONE
EXTERIOR STONE**



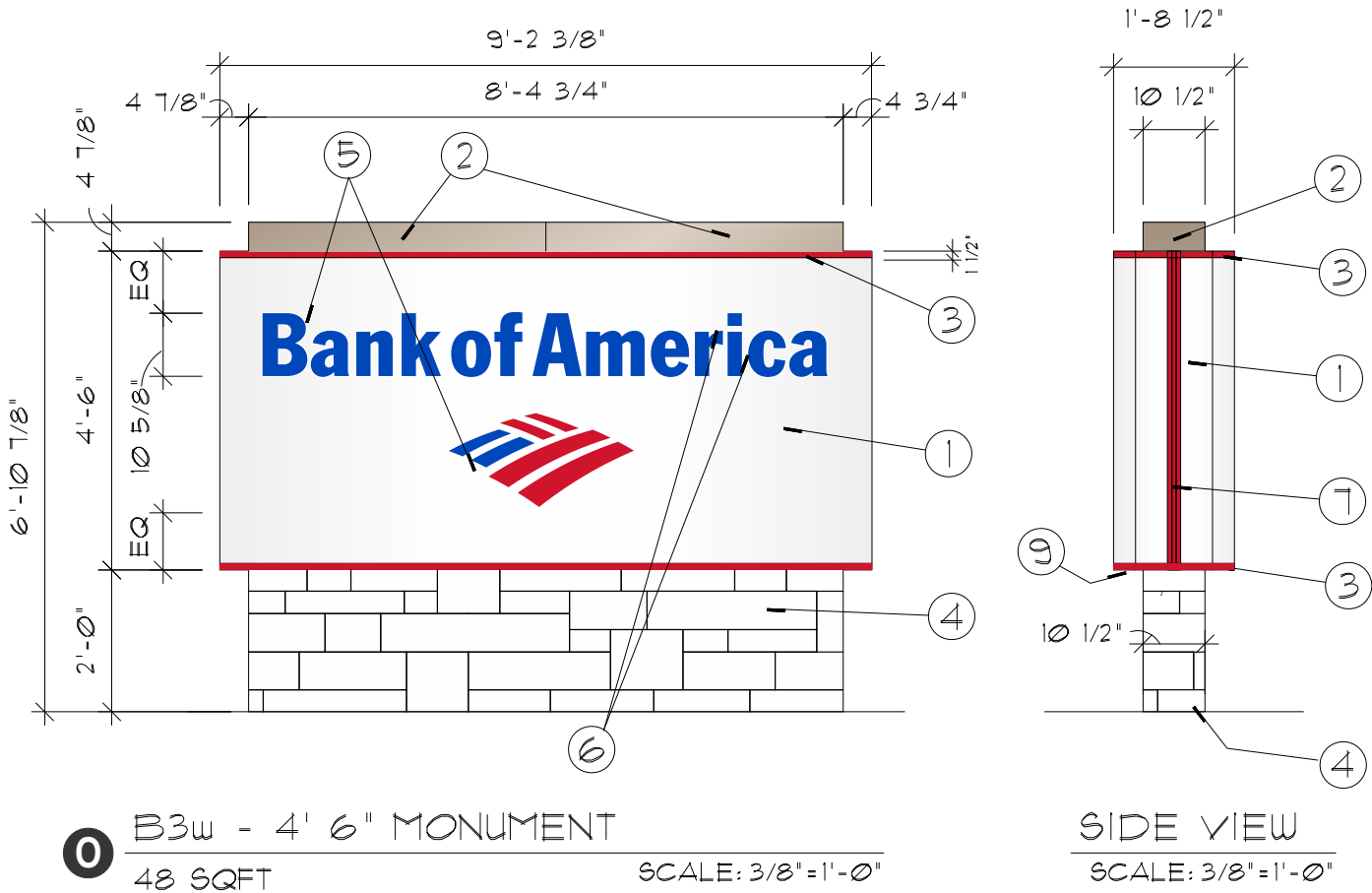
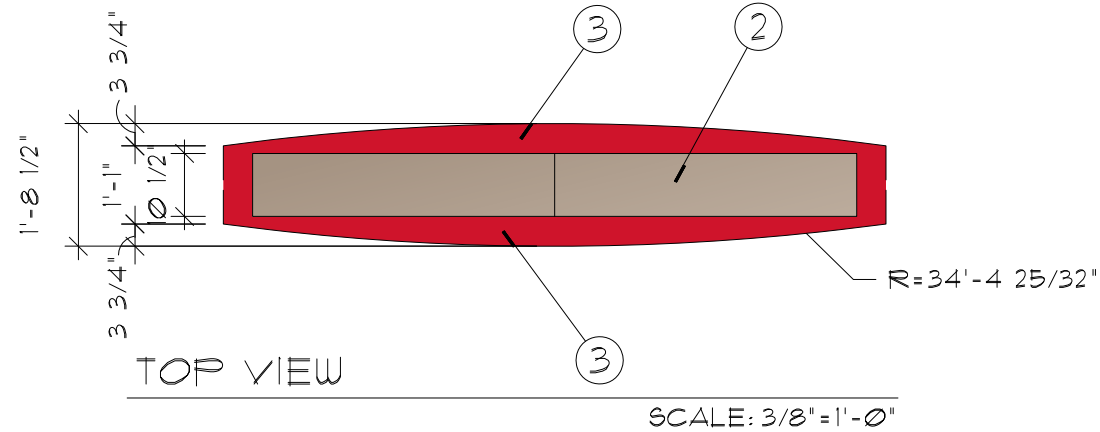
**STUCCO PAINT COLOR
BENJAMIN MOORE
"GRAND TETON WHITE" AC-42
STUCCO/PLASTER**



**TRESPA PURA
COLOR: PU17
AGED ASH FLUSH
CLADDING PANEL**

ADC
Architectural Design Collaborative

L01.00



NOTE:

1. SIGN FACE TO BE .111" CLEAR ACRYLIC (ACRYSTEEL OR APPROVED EQUAL). FIRST SURFACE DECORATE WITH 3M 3632-20 WHITE CUT TO THE FULL CHARACTER SIZE INCLUDING OUTLINE BASED ON 022B. OVERLAY WITH 3M BOA BLUE (RED AT FLAGSCAPE) FILM CUT TO THE DIMENSIONED CAP HEIGHT. CENTER IN WHITE BACKGROUND FOR EVEN OUTLINE AT PERIMETER. SECOND SURFACE DECORATE WITH 3M 3632-20 WHITE FILM. WEED OUT LETTERS/FLAGSCAPE TO EXTENT OF OUTLINE. OVERLAY ENTIRE SECOND SURFACE WITH 3M DIFFUSER FILM #3635-10 WHITE. HEAT BEND RETURNS AT ENDS OF FACE. DO NOT THERMOFORM (IT WILL STRETCH THE FILM AND CAUSE DISCOLORATION ON THE RETURN.) CHEM. WELD CONTINUOUS HANGING BAR AT PERIMETER. SEE DETAIL.
2. .125" BREAKFORMED ALUM. CLADDING/ACCESSPANEL. FORM AS SHOWN. PAINT FINISH CHAMPAGNE METALLIC. SEMI-GLOSS FINISH. ATTACH WITH COUNTERSUNK FLATHEAD STAINLESS STEEL SCREWS. PAINT HEADS TO MATCH.
3. 3/16" ALUM. RETAINER. FORM AS SHOWN. PAINT FINISH RED. SATIN FINISH. ATTACH TO CABINET RETURNS WITH COUNTERSUNK FLATHEAD STAINLESS STEEL SCREWS. PAINT HEADS TO MATCH.
4. MASONRY TO MATCH BUILDING CONSTRUCTION
5. "BANK OF AMERICA" AND PORTION OF FLAGSCAPE TO BE FIRST SURFACE DECORATED WITH 3M FILM BOA BLUE. SEE DETAIL FOR DECORATION AND BEVEL SIZING.
6. PORTIONS OF FLAGSCAPE TO FIRST SURFACE DECORATED WITH 3M FILM BOA RED. SEE DETAIL FOR DECORATION AND BEVEL SIZING.
7. .125" BREAK FORMED ALUMINUM REVEAL/RETAINER. FORM AS SHOWN. SEE DETAIL. PAINT FINISH RED SATIN FINISH. TWO HALVES CLAMSHELL. WELD ONE HALF TO VERTICAL TUBE BEHIND. MECHANICALLY ATTACH SECOND HALF WITH COUNTERSUNK FLATHEAD STAINLESS STEEL SCREWS. PAINT HEADS TO MATCH.
8. PLACE PRODUCT LABEL HERE. SEE SHEET PL-1 FOR DETAILS.
9. RECESSED UL. APPROVED EMERGENCY CUTOFF SWITCH.

GENERAL NOTES:

- FINAL SIZING FOR ALL STRUCTURAL MEMBERS (I.E. COLUMNS, MATCH PLATES, CONNECTION BOLTS, ANCHOR BOLTS, FOUNDATIONS AND REINFORCEMENT) TO BE SIZED BY A LICENSED ENGINEER TO MEET OR EXCEED ALL APPLICABLE LOCAL, STATE, AND FEDERAL CODES.
- FABRICATOR IS RESPONSIBLE FOR THE PREVENTION OF ANY LIGHT LEAKS.
- LEADS FROM BACK OF ILLUMINATED LETTERS / SYMBOL SHALL BE A MINIMUM OF 6'-0" IN LENGTH MEASURED FROM THE BACK SURFACE OF THE LETTERS / SYMBOL.
- PAINT INTERIORS OF ALL CABINETS WITH SPRAY-LAT STAR BRITE WHITE LIGHT ENHANCEMENT PAINT.
- ALL PAINT TO BE TWO-PART POLYURETHANE.
- COLOR FILM TO BE MATCHED IN 3M #3632 SERIES FILM.

MATERIAL SPECIFICATIONS

- PAINT
- CHAMPAGNE METALLIC - EITHER AKZO-NOBEL #BNK 250, MATTHEWS #MP 21314, MATTHEWS #BOA61945P, OR MATTHEWS #SVOC12129P (VOC COMPLIANT)
 - RED - MATTHEWS RED #MP 49696, AKZO-NOBEL #SIGN 20129
 - BLUE - MATTHEWS BLUE #MP 21610R 6595,
 - WHITE - MATTHEWS WHITE #MP 21668R 6595.

- FILM
- BLUE - 3M # 3632-8222
 - RED - 3M # 3632-2472
 - DIFFUSER - 3M # 3635-10
 - WHITE - 3M# 3632-20

- ACRYLIC
- CLEAR ACRYSTEEL *OR APPROVED EQUAL

- FILM DECORATION CHANNEL LETTERS ONLY, ACRYSTEEL #2441 OR APPROVED EQ.
- WHITE TRANSLUCENT-ACRYSTEEL #1328 OR APPROVED EQ.