

ONE (1) DOUBLE SIDED INTERNALLY ILLUM. MONUMENT

55.50 sq.ft.

CABINET

- Fab. .090 alum. over angle painted MP41312SP Medium Bronze.
- 2" retainer.
- Cabinet interior painted bright White.
- Internal Hanley® White (7000K) LED illum. w/ internal low voltage universal power supplies.

FACE

- .150" thk. trans. White polycarbonate pan w/ 1st surf. vinyl.
- 1.5" pan depth w/ approx. 90° pan profile drift.

GRAPHICS

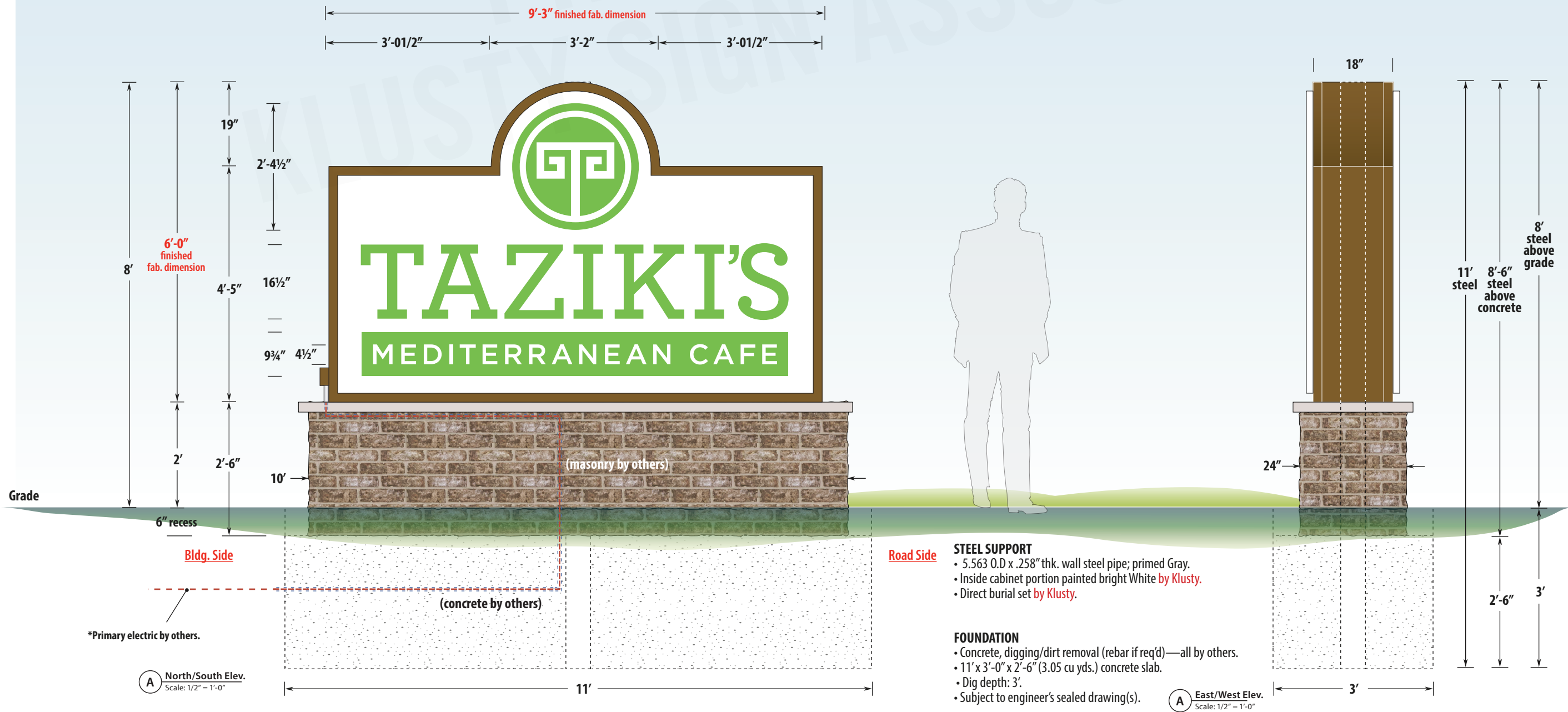
- 3M #3630-106 Brilliant Green trans. vinyl.
- Tagline letters: vinyl cut out / White poly show-thru.

MASONRY

- All components by others.

ELECTRICAL

- **Dedicated Primary Electric By others.**
- One (1) dedicated 20amp circuit.
- **120-277 volt / TBD amps**
- 2" x 4" weatherproof box w/ grounded 20amp disconnect and "Bell® Single Gang Device Cover"; ptd. to match cabinet.
- Req'd size PVC conduit through foundation **by Klusty.**
- Listed and labeled.



*After zoning approval, manufacturing methods may be subject to change.
 *Colors may not be exact as shown because of printer limitations. Refer to actual material color charts for true color representation.

APPROVED BY: _____ DATE: _____
 LANDLORD APPROVAL: _____ DATE: _____
 All designs and specifications are the sole copyrighted property of Klusty Sign Associates, Inc. Any unauthorized use, copying, or reproduction is a violation of Federal Copyright law and will be subject to prosecution.

DATE: 9/25/19
 SCALE: 1/2" = 1'-0"
 BY: Brian Marco
 REP: Vince Klusty

CLIENT : Taziki's Mediterranean Cafe
 LOC: 7331 Kenwood Rd.
 Cincinnati, OH 45236
 DRAWING NO: TMC-6.4257

Klusty SignAssociates
 Design | Branding Logistics
 3160 East Kemper Road • Cincinnati, OH 45241 1517

- STEEL SUPPORT**
- 5.563 O.D x .258" thk. wall steel pipe; primed Gray.
 - Inside cabinet portion painted bright White **by Klusty.**
 - Direct burial set **by Klusty.**

- FOUNDATION**
- Concrete, digging/dirt removal (rebar if req'd)—all by others.
 - 11' x 3'-0" x 2'-6" (3.05 cu yds.) concrete slab.
 - Dig depth: 3'
 - Subject to engineer's sealed drawing(s).

A North/South Elev.
 Scale: 1/2" = 1'-0"

A East/West Elev.
 Scale: 1/2" = 1'-0"