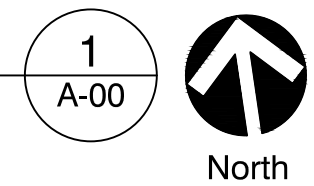


**SITE PLAN**  
SCALE: 1" = 30'-0"



**BUILDING DATA:**

**HOTEL :**

FIRST FLOOR :	20,021 SQ.FT.
SECOND FLOOR :	19,856 SQ.FT.
THIRD FLOOR :	19,856 SQ.FT.
FOURTH FLOOR :	19,856 SQ.FT.
FIFTH FLOOR :	19,856 SQ.FT.
TOTAL :	99,445 SQ.FT.

FIRST FLOOR :	6 KEYS
SECOND FLOOR :	32 KEYS
THIRD FLOOR :	32 KEYS
FOURTH FLOOR :	32 KEYS
FIFTH FLOOR :	32 KEYS
TOTAL :	134 KEYS

**OFFICE :**

BASEMENT LEVEL:	16,603 SQ.FT.
FIRST FLOOR :	16,025 SQ.FT.
(INCL. 8,914 SQ.FT. OF REST.)	
SECOND FLOOR :	22,319 SQ.FT.
THIRD FLOOR :	22,319 SQ.FT.
FOURTH FLOOR :	22,319 SQ.FT.
FIFTH FLOOR :	22,319 SQ.FT.
TOTAL :	121,904 SQ.FT.

FIRST FLOOR :	6 KEYS
SECOND FLOOR :	32 KEYS
THIRD FLOOR :	32 KEYS
FOURTH FLOOR :	32 KEYS
FIFTH FLOOR :	32 KEYS
TOTAL :	134 KEYS

**RETAIL :**

OFFICE :	8,941 SQ.FT.
HOTEL :	4,068 SQ.FT.
TOTAL :	13,009 SQ.FT.

\* ALL COMMERCIAL AWNINGS TO NOT EXCEED 48" FROM THE BUILDING, SEE EXTERIOR ELEVATIONS FOR DIMENSIONS

**APARTMENT :**

FIRST FLOOR :	59,452 SQ.FT.
SECOND FLOOR :	63,125 SQ.FT.
THIRD FLOOR :	63,115 SQ.FT.
FOURTH FLOOR :	57,292 SQ.FT.
FIFTH FLOOR :	44,773 SQ.FT.
TOTAL :	287,757 SQ.FT.

**UNIT MIX :**

FLOOR	S	1B	2B	2B-D	TOTAL
1ST	2	23	12	4	41
2ND	4	34	15	4	57
3RD	5	34	15	4	58
4TH	5	31	13	4	53
5TH	3	26	9	1	39
TOTAL	19	148	64	17	248

**WEST PARKING GARAGE :**

FIRST LEVEL (PARTIAL IN-GROUND) :	53,019 SQ.FT.
SECOND LEVEL (ABOVE GROUND) :	53,019 SQ.FT.
THIRD FLOOR (ABOVE GROUND) :	53,019 SQ.FT.
FOURTH FLOOR (ABOVE GROUND) :	53,019 SQ.FT.
FIFTH FLOOR (ABOVE GROUND) :	47,229 SQ.FT.
TOTAL :	259,305 SQ.FT.

**PARKING DATA:**

**PARKING PROVIDED :**

**WEST PARKING GARAGE :**

FIRST LEVEL (PARTIAL IN-GROUND) :	128 P.S.
COMPACT PARKING:	28 P.S.
ACCESSIBLE PARKING:	8 P.S.
SECOND LEVEL (ABOVE GROUND) :	145 P.S.
COMPACT PARKING:	18 P.S.
ACCESSIBLE PARKING:	2 P.S.
THIRD FLOOR (ABOVE GROUND) :	148 P.S.
COMPACT PARKING:	18 P.S.
ACCESSIBLE PARKING:	2 P.S.
FOURTH FLOOR (ABOVE GROUND) :	148 P.S.
COMPACT PARKING:	18 P.S.
ACCESSIBLE PARKING:	2 P.S.
FIFTH FLOOR (ABOVE GROUND) :	116 P.S.
COMPACT PARKING:	18 P.S.
ACCESSIBLE PARKING:	2 P.S.
TOTAL WEST PARKING:	801 P.S.

**EAST PARKING :**

SURFACE :	84 P.S.
ACCESSIBLE PARKING :	4 P.S.
<b>TOTAL PROJECT PARKING:</b>	<b>889 P.S.</b>



Sycamore Township  
Planning & Zoning

ZONE CASE NUMBER: **2021-19MI**

**MINOR PUD ADJUSTMENT**

APPROVAL DATE: **11/24/2021**



NOV. 10, 2021 PUD MINOR AMENDMENT

Kenwood, Ohio | RESIDENCE INN BY MARRIOTT

**A 00**

©2021 HIFIVE DESIGN GROUP. THIS DOCUMENT IS THE PRODUCT AND EXCLUSIVE PROPERTY OF HIFIVE DESIGN GROUP. NEITHER THE DOCUMENT NOR THE INFORMATION IT CONTAINS MAY BE COPIED, REFERENCED OR USED FOR ANY OTHER THAN THE SPECIFIC PURPOSE FOR WHICH IT WAS PREPARED WITHOUT THE EXPLICIT WRITTEN CONSENT OF HIFIVE DESIGN GROUP. NOTE: THIS DRAWING IS FOR DESIGN INTENT AND PRELIMINARY BUDGET ANALYSIS ONLY. INFORMATION IS SUBJECT TO CHANGE PER SURVEY, CIVIL ENGINEERING AND LOCAL BUILDING OFFICIALS.



**EAST ELEVATION**  
SCALE: 3/32" = 1'-0"







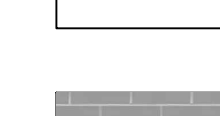

1  
A-03



**NORTH ELEVATION**  
SCALE: 3/32" = 1'-0"

2  
A-03

**MATERIAL LEGEND**

-  WATER MANAGED EIFS COLOR #1
-  WATER MANAGED EIFS COLOR #2
-  WATER MANAGED EIFS COLOR #3
-  WATER MANAGED EIFS COLOR #4
-  WATER MANAGED EIFS COLOR #5
-  WATER MANAGED EIFS WATERTABLE COLOR #6
-  MASONRY GREY BRICK
-  MASONRY TAN BRICK



Sycamore Township  
Planning & Zoning

ZONE CASE NUMBER: **2021-19MI**

**MINOR PUD ADJUSTMENT**

APPROVAL DATE: **11/24/2021**



NOV. 10, 2021

PUD MINOR AMENDMENT

Kenwood, Ohio | RESIDENCE INN BY MARRIOTT

**A 03**



WEST ELEVATION  
SCALE: 3/32" = 1'-0"

1  
A-04



SOUTH ELEVATION  
SCALE: 3/32" = 1'-0"

2  
A-04

MATERIAL LEGEND	
	WATER MANAGED EIFS COLOR #1
	WATER MANAGED EIFS COLOR #2
	WATER MANAGED EIFS COLOR #3
	WATER MANAGED EIFS COLOR #4
	WATER MANAGED EIFS COLOR #5
	WATER MANAGED EIFS WATERTABLE COLOR #6
	MASONRY GREY BRICK
	MASONRY TAN BRICK



Sycamore Township  
Planning & Zoning

ZONE CASE NUMBER: **2021-19MI**

**MINOR PUD ADJUSTMENT**

APPROVAL DATE: **11/24/2021**



NOV. 10, 2021

PUD MINOR AMENDMENT

Kenwood, Ohio | RESIDENCE INN BY MARRIOTT

A 04

©2021 HIFIVE DESIGN GROUP. THIS DOCUMENT IS THE PRODUCT AND EXCLUSIVE PROPERTY OF HIFIVE DESIGN GROUP. NEITHER THE DOCUMENT NOR THE INFORMATION IT CONTAINS MAY BE COPIED, REFERENCED OR USED FOR ANY OTHER THAN THE SPECIFIC PURPOSE FOR WHICH IT WAS PREPARED WITHOUT THE EXPLICIT WRITTEN CONSENT OF HIFIVE DESIGN GROUP. NOTE: THIS DRAWING IS FOR DESIGN INTENT AND PRELIMINARY BUDGET ANALYSIS ONLY. INFORMATION IS SUBJECT TO CHANGE PER SURVEY, CIVIL ENGINEERING AND LOCAL BUILDING OFFICIALS.